



Websters
estate agents

2 Heath Gardens, Strawberry Hill, TW1 4LZ

Open Day from Saturday 11th October with best and final offers by Friday 24th October.

Attractive bay fronted semi detached Victorian house in a sought after residential road just 0.2 miles from Twickenham Green, shops and restaurants.

Well presented throughout with light neutral décor, this lovely home offers 1302 sq ft of adaptable living space over 3 floors with potential to create a larger 2nd floor and add a 4th bedroom (subject to planning permission and building regulations).

Entrance hallway leads into dual aspect through lounge with beautiful wood flooring and a feature fireplace. The addition of a side and rear extension provides space for the stunning kitchen/family/dining room which opens directly onto the west facing lawned garden.

Upstairs are 2 double bedrooms and the modern family bathroom with stairs leading up to the master bedroom with en-suite shower facilities.

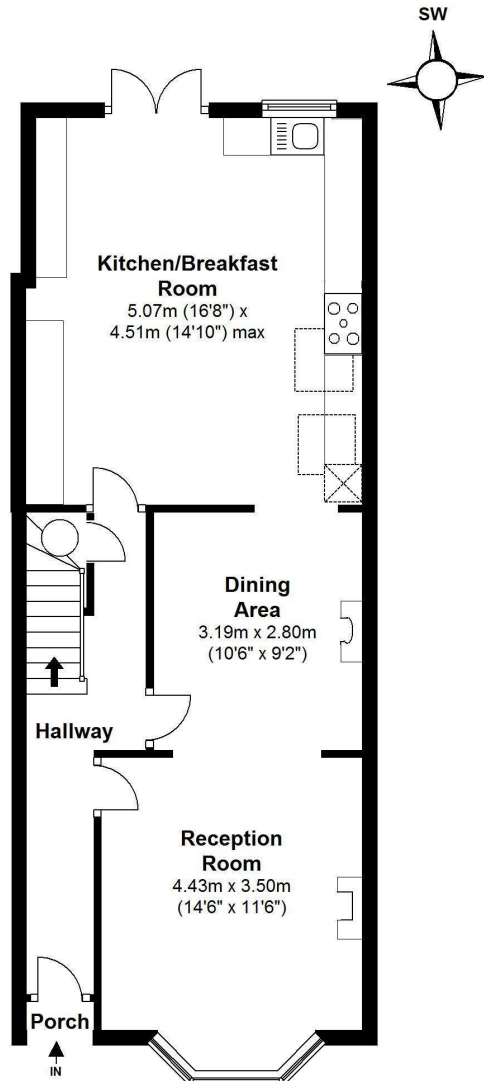
Located 0.7 miles from Twickenham mainline station and just 0.6 miles from Strawberry Hill station.

EPC Rating D

- Bay Fronted Semi Detached Home
- Desirable Residential Location
- 3 Double Bedrooms
- 2 Bathrooms
- Spacious Kitchen/Family Room
- West Facing Garden
- Potential to Extend (stpp)
- 0.7 Miles from Twickenham Mainline Station

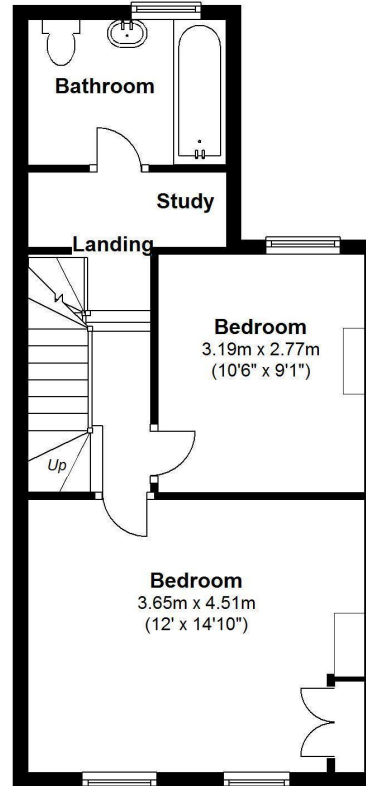


Heath Gardens, Twickenham



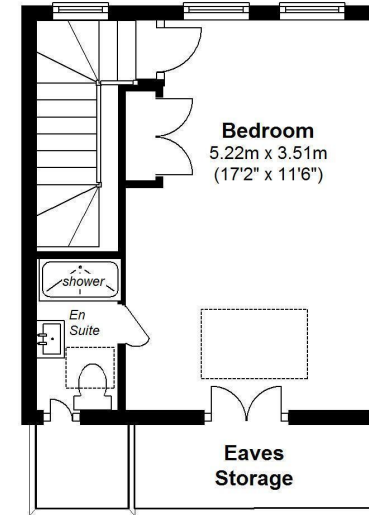
Ground Floor

Floor area approx. = 607 Sq.Feet (56.39 sq.metres)



First Floor

Floor area approx. = 430 Sq.Feet (39.93 sq.metres)



Second Floor

Floor area approx. = 265 Sq.Feet (24.59 sq.metres)

Gross Floor area approx. = 1,302 Sq.Feet (120 sq.metres)

a Websters Estate Agents 36 Broad Street, Teddington, Middlesex TW11 8QY

t 020 8614 6000

e sales@mywebsters.co.uk **w** mywebsters.co.uk

Disclaimer

These particulars, whilst believed to be accurate are set out as a general outline only for guidance and do not constitute any part of an offer or contract. Intending purchasers should not rely on them as statements of representation of fact, but must satisfy themselves by inspection or otherwise as to their accuracy. We have not carried out a detailed survey nor tested the services, appliances and specific fittings. Room sizes should not be relied upon for carpets and furnishings. The measurements given are approximate. No person in this firm's employment has the authority to make or give any representation or warranty in respect of the property.

