



Websters
estate agents

Norcutt Road, Twickenham, TW2 6SR

Attractive mid terrace Victorian cottage in a desirable road only 300 metres from Twickenham Green and local shops/restaurants. 4% rental yield circa £1700pcm.

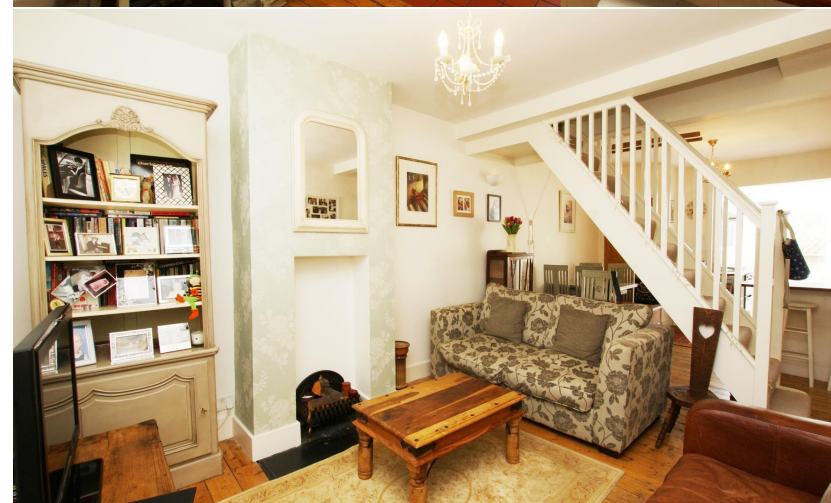
Beautifully presented throughout with bright neutral décor and period features, this lovely home offers 845 sq ft of living space over 3 floors.

Front door leads into the open plan living/dining room with the modern kitchen at the rear of the property. A vaulted and glazed roof in the kitchen ensures a light airy feel downstairs. A door at the rear opens onto the patio courtyard garden and a storage shed.

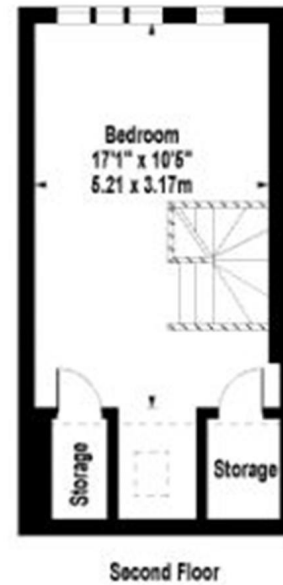
On the first floor is a double bedroom, luxury family bathroom and a study. Stairs lead up to the second double bedroom with storage cupboards in the loft conversion.

Located in a quiet road with unrestricted road parking just 700 metres from Twickenham mainline train station and Strawberry Hill station.

- Mid Terrace Victorian Cottage
- 4% Rental Yield Circa £1700pcm
- Beautifully Presented Throughout
- Open Plan Living Room
- Modern Fitted Kitchen
- 2 Double Bedrooms
- Luxury Family Bathroom
- Courtyard Patio Garden
- 700 Metres from Twickenham Mainline Station



N
**Norcutt Road,
 Twickenham, TW2 6SR**
 Approx Gross Internal Area
845 Sq Ft - 78.50 Sq M
 (Excluding Shed)



a Websters Estate Agents 36 Broad Street, Teddington, Middlesex TW11 8QY t 020 8614 6000 e sales@mywebsters.co.uk w mywebsters.co.uk

Disclaimer
 These particulars, whilst believed to be accurate are set out as a general outline only for guidance and do not constitute any part of an offer or contract. Intending purchasers should not rely on them as statements of representation of fact, but must satisfy themselves by inspection or otherwise as to their accuracy. We have not carried out a detailed survey nor tested the services, appliances and specific fittings. Room sizes should not be relied upon for carpets and furnishings. The measurements given are approximate. No person in this firm's employment has the authority to make or give any representation or warranty in respect of the property.

