



Websters  
estate agents

# 27 Popes Grove, Strawberry Hill, TW1 4JZ

Open days from Saturday 5th April, with best and final offers to be received by Monday 28th April.

Detached 1,100 sq. ft, 3 bedroom house offering huge potential to modernise and extend to create a superb contemporary family home.

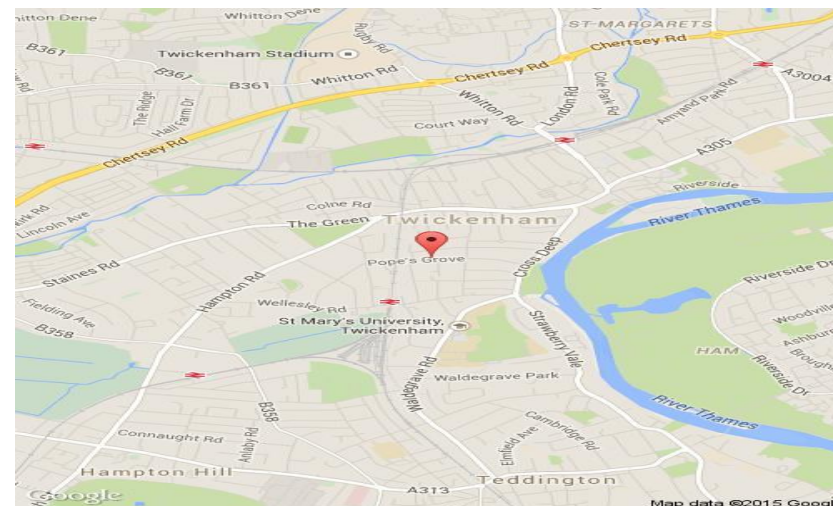
Situated in a highly regarded and much requested Strawberry Hill location with off street parking for 3 cars, a garage and a 60ft rear garden.

Entrance hallway leading to the through lounge, separate dining room, kitchen/breakfast room and downstairs w.c.

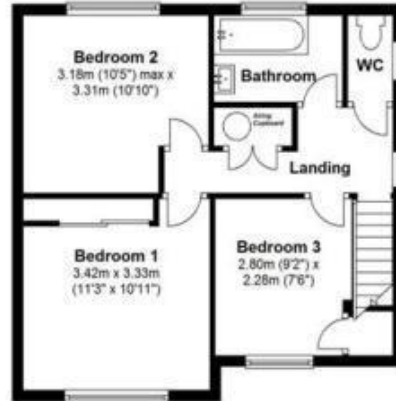
Upstairs are 3 bedrooms, the family bathroom and toilet.

Located 0.3 miles from Strawberry Hill Station and Radnor Gardens/River Thames. Only 1 mile from Twickenham Mainline Station and shops.

- Open Days From Saturday 5th April
- Detached 3 Bedroom House
- Potential to Modernise and Extend
- Desirable Strawberry Hill Location
- Through Lounge and Separate Dining Room
- Kitchen/Breakfast Room
- Driveway Parking and Garage
- 60 Ft Garden

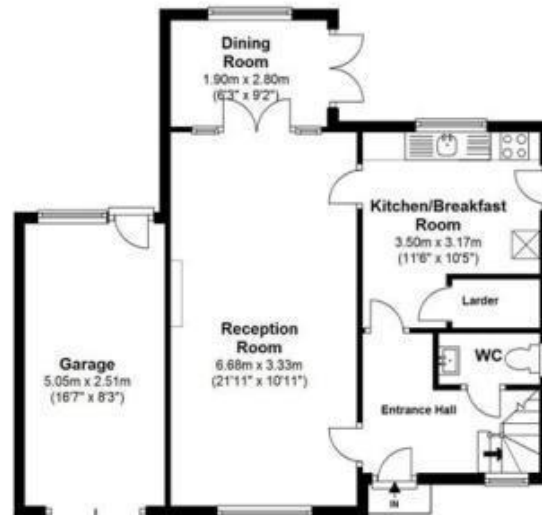
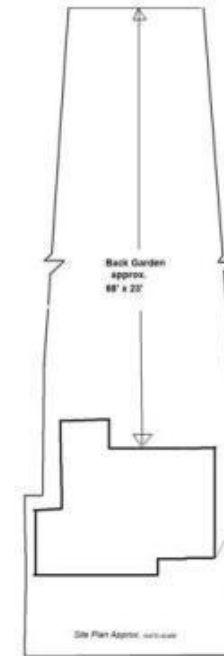


Popes Grove



**First Floor**

Floor area approx. = 454 Sq. Feet ( 42.18 sq.metres)



**Ground Floor**

Floor area approx. = 646 Sq. Feet ( 60.04 Sq. metres)

Gross Floor Area approx. = 1,100 Sq. Feet (102 sq. metres)

a Websters Estate Agents 36 Broad Street, Teddington, Middlesex TW11 8QY t 020 8614 6000 e sales@mywebsters.co.uk w mywebsters.co.uk

**Disclaimer**

These particulars, whilst believed to be accurate are set out as a general outline only for guidance and do not constitute any part of an offer or contract. Intending purchasers should not rely on them as statements of representation of fact, but must satisfy themselves by inspection or otherwise as to their accuracy. We have not carried out a detailed survey nor tested the services, appliances and specific fittings. Room sizes should not be relied upon for carpets and furnishings. The measurements given are approximate. No person in this firm's employment has the authority to make or give any representation or warranty in respect of the property.

