



Websters
estate agents

Park Crescent, Twickenham, TW2 6NS

Attractive 3 bedroom, mid terrace town house in a popular quiet cul-de-sac location with vacant possession and no forward chain.

Arranged over 3 floors with a ground floor extension, this lovely family home offers 1165sq ft of living space with a pleasing neutral décor.

Covered front door leads to the entrance hallway with access to a w.c and the light and airy newly fitted kitchen/family room on the ground floor. Doors open directly onto the patio and lawned garden at the rear.

On the first floor is the spacious living room and a double bedroom. The master bedroom with en-suite facilities, third bedroom and the family bathroom are on the second floor.

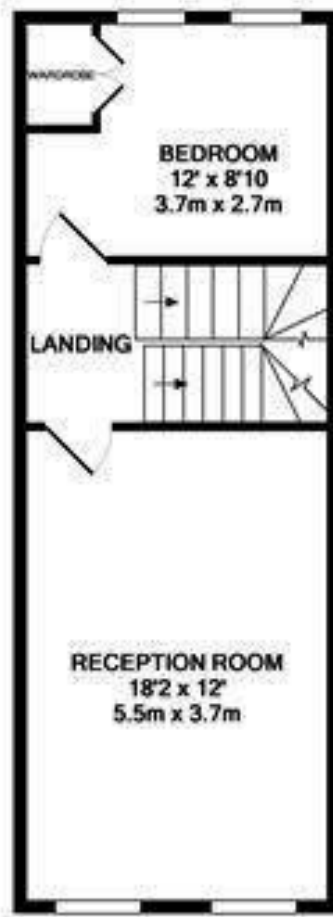
Located only a 400 metre walk from Whitton mainline train station, less than 1 mile from Twickenham station and just 200 metres from Kneller Gardens/Park and the River Crane.
EPC Rating C

- Modern Style Townhouse
- Vacant Possession - No Chain
- 1165 Sq ft over 3 Floors
- Quiet Cul-de-Sac Location
- 3 Bedrooms - Master with En Suite
- Luxury Family Bathroom
- Extended Ground Floor Kitchen/Family Room
- Driveway with Undercroft Parking

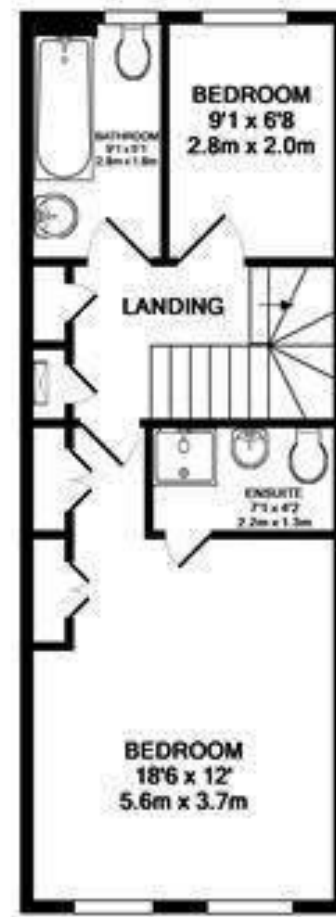




GROUND FLOOR
APPROX. FLOOR
AREA 383 SQ.FT.
(35.5 SQ.M.)



1ST FLOOR
APPROX. FLOOR
AREA 383 SQ.FT.
(35.5 SQ.M.)



2ND FLOOR
APPROX. FLOOR
AREA 381 SQ.FT.
(35.4 SQ.M.)

TOTAL APPROX. FLOOR AREA 1146 SQ.FT. (106.5 SQ.M.)

Whilst every attempt has been made to ensure the accuracy of the floor plan contained here, measurements of doors, windows, rooms and any other items are approximate and no responsibility is taken for any error, omission, or mis-statement. This plan is for illustrative purposes only and should be used as such by any prospective purchaser. The services, systems and appliances shown have not been tested and no guarantee as to their operability or efficiency can be given.
Made with Metropix ©2010



