



Websters
estate agents
020 8892 3343
mywebsters.co.uk For Sale

Websters
estate agents

153 Waverley Avenue, Twickenham, TW2 6DJ

Impressive double fronted semi detached 5 bedroom home arranged over three floors with 1485 sq ft of living space and just professionally decorated. Potential to further extend the rear of the property subject to usual building/planning requirements.

Well kept home located in a popular tree lined avenue offering versatile living accommodation.

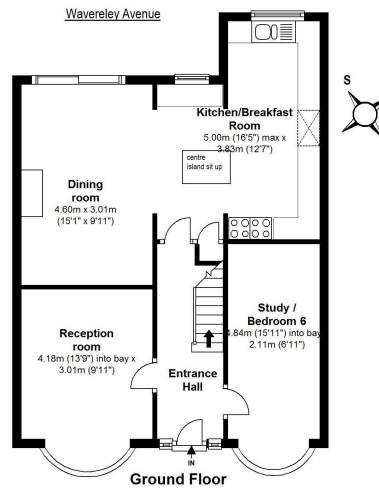
Downstairs are 2 separate reception rooms and a dining room which leads into the spacious and modern kitchen/breakfast room. The kitchen is fully fitted, with a central island and a door opening onto the garden.

Upstairs, the 5 bedrooms are complimented by a family bathroom and an en suite shower to the master bedroom.

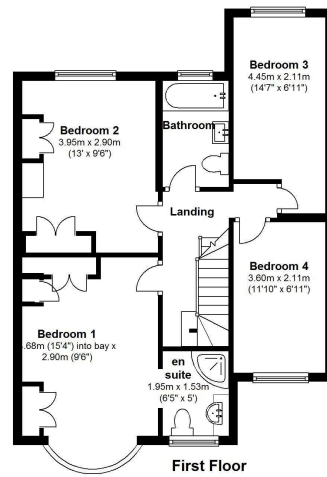
A large gravel driveway provides off street parking for 2 to 3 cars. The rear garden is south facing, secluded and in the region of 100ft long.

EPC Rating D





Floor Area approx. = 645 Sq. Feet (59.94 sq.metres)



Floor Area approx. = 607 Sq. Feet (56.36 sq.metres)



Floor Area approx. = 230 Sq. Feet (21.35 sq.metres)

Total Floor Area approx. = 1,485 Sq. Feet (137.65 sq.metres)

a Websters Estate Agents 36 Broad Street, Teddington, Middlesex TW11 8QY

t 020 8614 6000

e sales@mywebsters.co.uk w mywebsters.co.uk

Disclaimer

These particulars, whilst believed to be accurate are set out as a general outline only for guidance and do not constitute any part of an offer or contract. Intending purchasers should not rely on them as statements of representation of fact, but must satisfy themselves by inspection or otherwise as to their accuracy. We have not carried out a detailed survey nor tested the services, appliances and specific fittings. Room sizes should not be relied upon for carpets and furnishings. The measurements given are approximate. No person in this firm's employment has the authority to make or give any representation or warranty in respect of the property.

