



Websters  
estate agents  
ESTIMATED For Sale

Websters  
estate agents

# Mereway Road, Twickenham, TW2 6RF

A very pretty 2 double bedroom Victorian cottage retaining a great deal of period character.

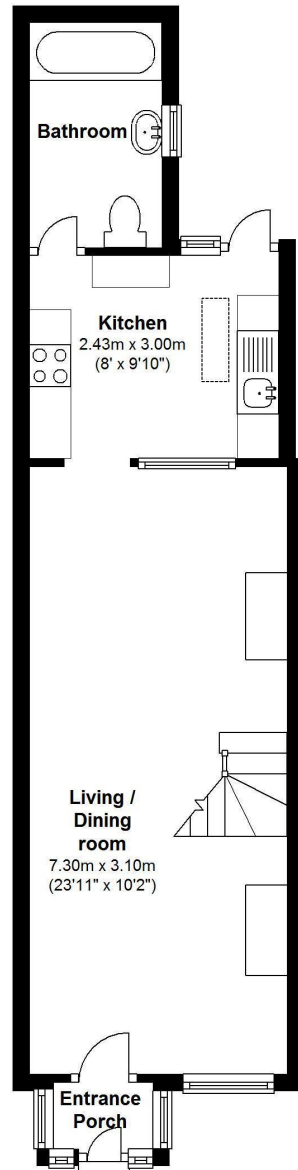
A through lounge with original pine floor boards, feature fire place and sash windows lead through to the modern kitchen and rear garden. The kitchen, although modern, may need some updating.

The secluded rear garden is not overlooked and has rear access for garden waste and bicycles.

Twickenham Green is less than 250 yards away and Twickenham and Strawberry Hill mainline stations are both under a mile away.

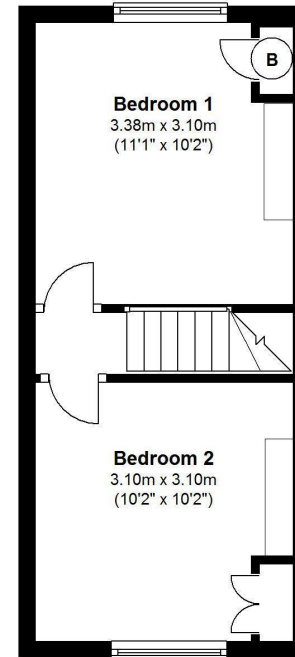
- Pretty Victorian Cottage
- Two Double Bedrooms
- Gas Heating
- Vacant Possession - No Chain
- Period Character
- Through Lounge
- Secluded Garden Rear Access





**Ground Floor**

*Approx. area = 380 Sq. Feet (35.25 sq. metres)*



**First Floor**

*Approx. area = 244 Sq. Feet (22.60 sq. metres)*

*TOTAL Floor area approx. 624 Sq. Feet (57.88 sq. metres)*

**a** Websters Estate Agents 36 Broad Street, Teddington, Middlesex TW11 8QY

**t** 020 8614 6000

**e** sales@mywebsters.co.uk **w** mywebsters.co.uk

**Disclaimer**

These particulars, whilst believed to be accurate are set out as a general outline only for guidance and do not constitute any part of an offer or contract. Intending purchasers should not rely on them as statements of representation of fact, but must satisfy themselves by inspection or otherwise as to their accuracy. We have not carried out a detailed survey nor tested the services, appliances and specific fittings. Room sizes should not be relied upon for carpets and furnishings. The measurements given are approximate. No person in this firm's employment has the authority to make or give any representation or warranty in respect of the property.

