



Websters
ESTATE AGENTS
400-100-1000 For Sale

Websters
estate agents

Hamilton Road, Twickenham, TW2 6SN

A charming 3 bedroom Victorian cottage, tucked away at the end of a popular residential cul-de-sac.

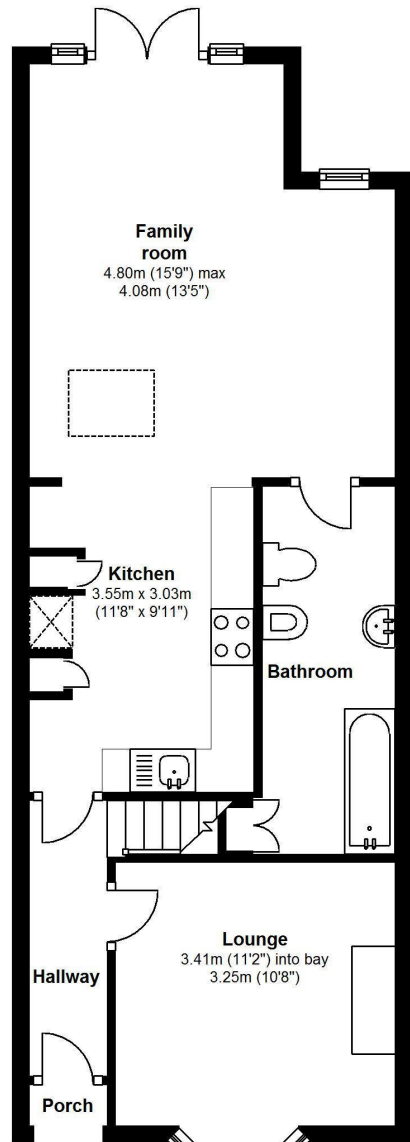
There is a separate reception room complete with a feature fireplace and the fitted kitchen and downstairs bathroom are both modern. The full width rear extension creates a wonderful open plan kitchen/dining room, leading onto a pretty courtyard rear garden.

Upstairs are two doubles and a single bedroom.

Popular residential road in the Twickenham Green area of Twickenham and less than a mile from the mainline station.

- Victorian Cottage
- 3 Bedrooms
- Separate Reception Room
- Full Width Rear Extension
- Modern Kitchen & Bathroom
- No Forward Chain - Vacant
- Popular Location
- Period Character
- Replacement Roof

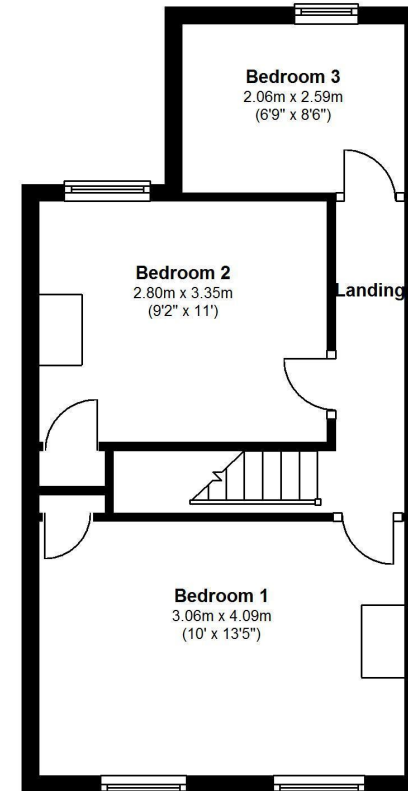




Ground Floor

Approx. 46.98 sq.metres (586 sq.feet)

Total floor area approx. 81.36 sq.metres (955 sq.feet)



First Floor

Approx. 34.38 sq.metres (369 sq.feet)

a Websters Estate Agents 36 Broad Street, Teddington, Middlesex TW11 8QY

t 020 8614 6000

e sales@mywebsters.co.uk **w** mywebsters.co.uk

Disclaimer

These particulars, whilst believed to be accurate are set out as a general outline only for guidance and do not constitute any part of an offer or contract. Intending purchasers should not rely on them as statements of representation of fact, but must satisfy themselves by inspection or otherwise as to their accuracy. We have not carried out a detailed survey nor tested the services, appliances and specific fittings. Room sizes should not be relied upon for carpets and furnishings. The measurements given are approximate. No person in this firm's employment has the authority to make or give any representation or warranty in respect of the property.

