



Websters  
estate agents



# 18 Heath Gardens, Twickenham, TW1 4LZ

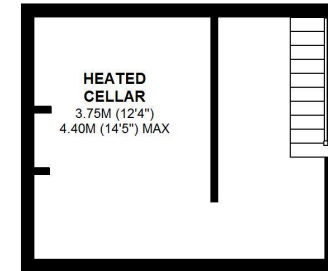
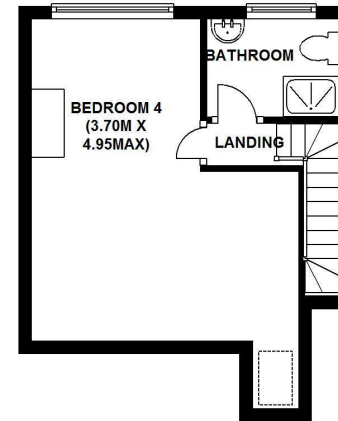
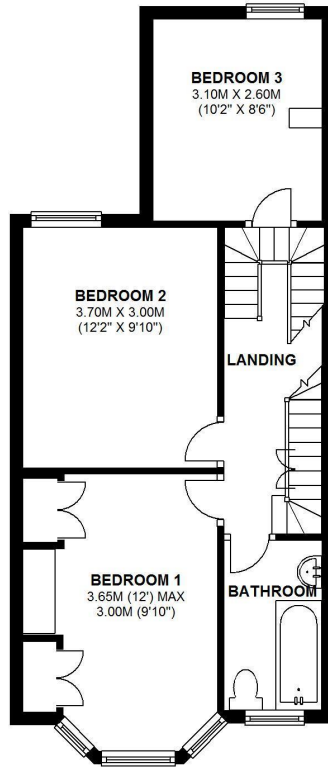
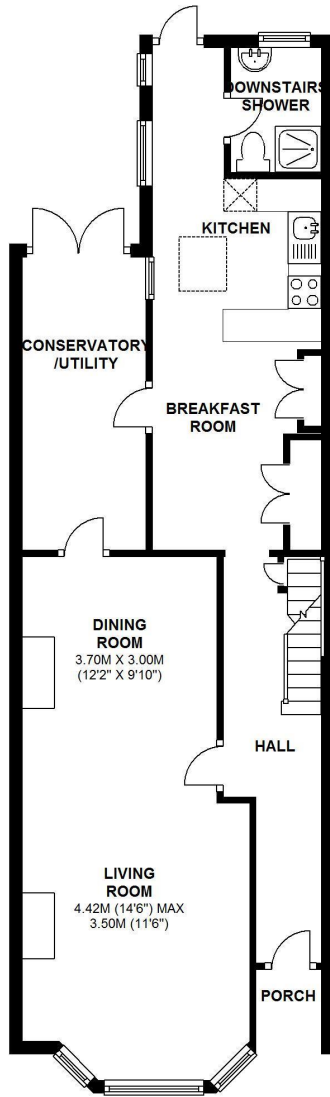
A very attractive, sash bay fronted, semi detached 4 bedroom Victorian family house in need of updating.

Arranged over 3 floors, offering 1692 sq ft of accommodation, with 4 double bedrooms, family bathroom and shower room upstairs. Downstairs, the through lounge could be easily re arranged to provide two separate reception rooms with feature fireplace and sash bay window. From the hallway is access to a useable cellar with power, lighting and head height in excess of 6 ft. The kitchen/breakfast room is next to a utility/conservatory area and a shower room. These rooms could potentially could be incorporated into an extension to create a large, stunning open plan kitchen/family room with direct access onto a west facing garden.

Heath Gardens is a much sought after road conveniently located just off Twickenham's main high street, Heath Road. The property is located between Strawberry Hill and Twickenham mainline stations both less than 0.7 miles away.

- Victorian Semi Detached House
- 4 Double Bedrooms & 2 Reception Rooms
- Period Features
- Potential to Extend & Modernise
- Useful Full Head Height Cellar
- West Facing Garden
- Strawberry Hill & Twickenham Stations Less than 0.7 Miles





TOTAL AREA: APPROX. 157.2 SQ. METRES (1692.1 SQ. FEET)

a Websters Estate Agents 36 Broad Street, Teddington, Middlesex TW11 8QY

t 020 8614 6000

e sales@mywebsters.co.uk w mywebsters.co.uk

**Disclaimer**

These particulars, whilst believed to be accurate are set out as a general outline only for guidance and do not constitute any part of an offer or contract. Intending purchasers should not rely on them as statements of representation of fact, but must satisfy themselves by inspection or otherwise as to their accuracy. We have not carried out a detailed survey nor tested the services, appliances and specific fittings. Room sizes should not be relied upon for carpets and furnishings. The measurements given are approximate. No person in this firm's employment has the authority to make or give any representation or warranty in respect of the property.



