



45

44

43

Websters
estate agents

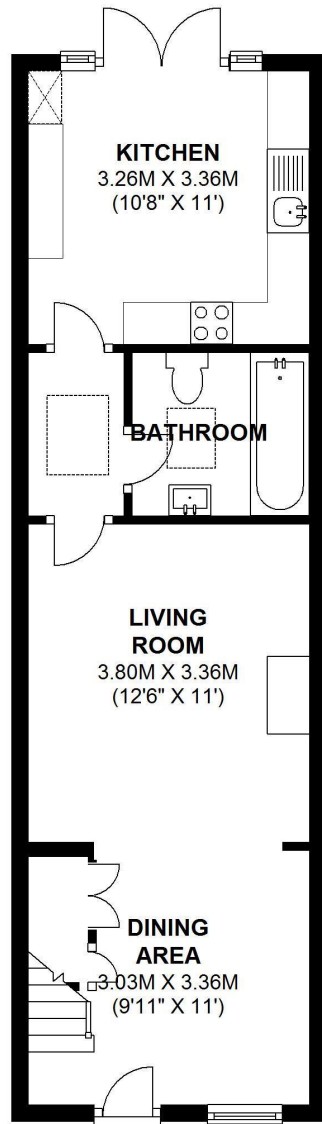
44 Camac Road, Twickenham, TW2 6NU

A superbly presented Victorian cottage tucked away in a quiet backwater less than 100 yards from Twickenham Green.

The property has a spacious through reception room with a wood burning stove, 2 bedrooms, master bedroom with vaulted ceiling and exposed brick chimney breast, modern white bathroom suite, fantastic fitted kitchen with double doors opening onto a south facing secluded garden.

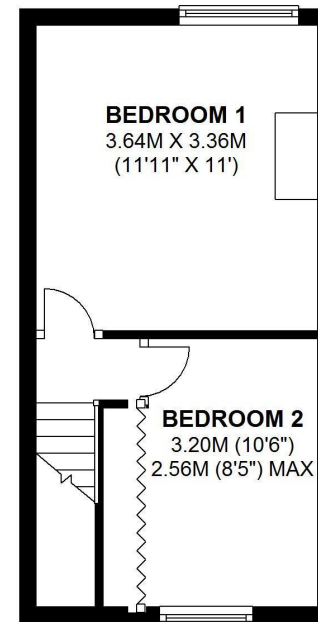
- Victorian Cottage
- 2 Bedrooms
- Through Lounge
- Period Character
- Luxury White Bathroom
- Fantastic Fitted Kitchen
- South Facing Garden
- 100 Yards from Twickenham Green





GROUND FLOOR

APPROX. 41.5 SQ. METRES (446.3 SQ. FEET)



FIRST FLOOR

APPROX. 23.3 SQ. METRES (251.0 SQ. FEET)

TOTAL AREA: APPROX. 64.8 SQ. METRES (697.3 SQ. FEET)

a Websters Estate Agents 36 Broad Street, Teddington, Middlesex TW11 8QY **t** 020 8614 6000 **e** sales@mywebsters.co.uk **w** mywebsters.co.uk

Disclaimer
These particulars, whilst believed to be accurate are set out as a general outline only for guidance and do not constitute any part of an offer or contract. Intending purchasers should not rely on them as statements of representation of fact, but must satisfy themselves by inspection or otherwise as to their accuracy. We have not carried out a detailed survey nor tested the services, appliances and specific fittings. Room sizes should not be relied upon for carpets and furnishings. The measurements given are approximate. No person in this firm's employment has the authority to make or give any representation or warranty in respect of the property.

