

Websters  
estate agents  
020 8892 3343  
mywebsters.co.uk For Sale

Websters  
estate agents



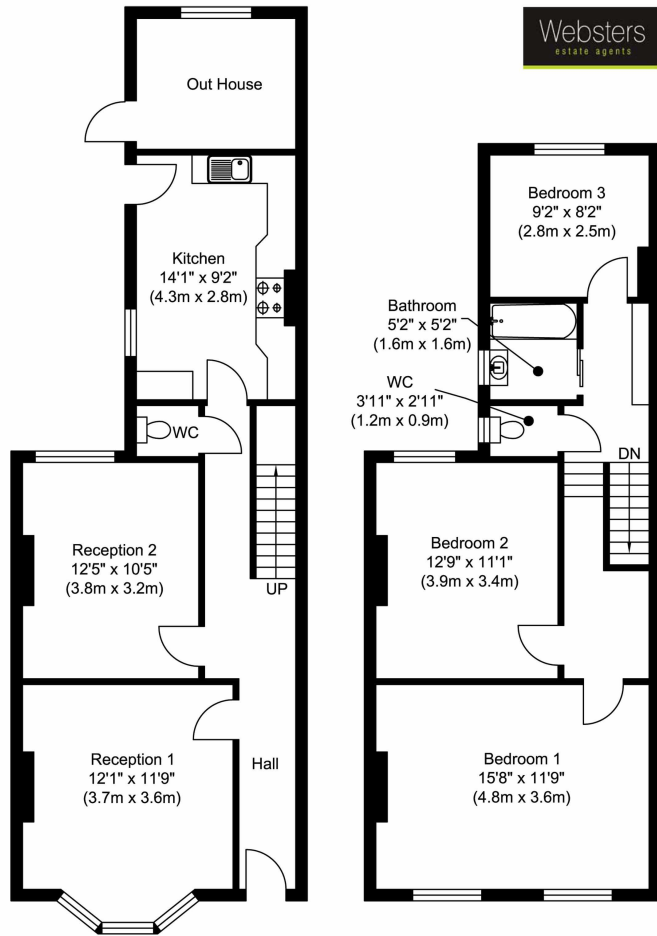
# Oldfield Road, Hampton, TW12 2AE

Guide Price £385,000.

To be Sold by Joint auctioneers Websters & Savills by public auction on Tuesday 24th July at the Millennium Hotel 44 Grosvenor Square London W1K 2HP. A very attractive, Sash bay fronted Victorian 3 bed semi, retaining a great deal of its original period character. There are 2 separate reception rooms, downstairs w.c, white kitchen, upstairs bathroom and 40 ft rear garden. There is potential to loft convert subject to planning permission. Oldfield Road is less than 150 yards from Hampton railway station and local amenities such as bus stops and Waitrose store.

- 3 Bed Semi
- 2 Reception Rooms
- High Ceilings & Sash Windows
- Period Features
- Upstairs Bathroom
- Potential to Loft Convert (stpp)





Ground Floor  
Approximate Floor Area  
632.81 sq. ft.  
(58.79 sq. m)

First Floor  
Approximate Floor Area  
550.25 sq. ft.  
(51.12 sq. m)

Total Gross Internal Area  
1183.06 sq. ft.  
(109.91 sq. m)

Oldfield Road

Whilst every attempt has been made to ensure the accuracy of the floor plan contained here, measurements of doors, windows, rooms and any other items are approximate and no responsibility is taken for any error, omission, or mis-statement. This plan is for illustrative purposes only and should be used as such by any prospective purchaser. The services, systems and appliances shown have not been tested and no guarantee as to their operability or efficiency can be given.  
www.virtua360.net

Disclaimer

These particulars, whilst believed to be accurate are set out as a general outline only for guidance and do not constitute any part of an offer or contract. Intending purchasers should not rely on them as statements of representation of fact, but must satisfy themselves by inspection or otherwise as to their accuracy. We have not carried out a detailed survey nor tested the services, appliances and specific fittings. Room sizes should not be relied upon for carpets and furnishings. The measurements given are approximate. No person in this firm's employment has the authority to make or give any representation or warranty in respect of the property.

