



Websters
estate agents

Broom Road, Teddington, TW11 9PG

Ground floor conversion apartment in an attractive detached Edwardian house. Situated on a popular Teddington river road 0.6 miles from Teddington Lock, riverside towpath walks towards Richmond and Hampton Court and within 0.5 miles of Hampton Wick Infant, St John the Baptist and Teddington Secondary Schools

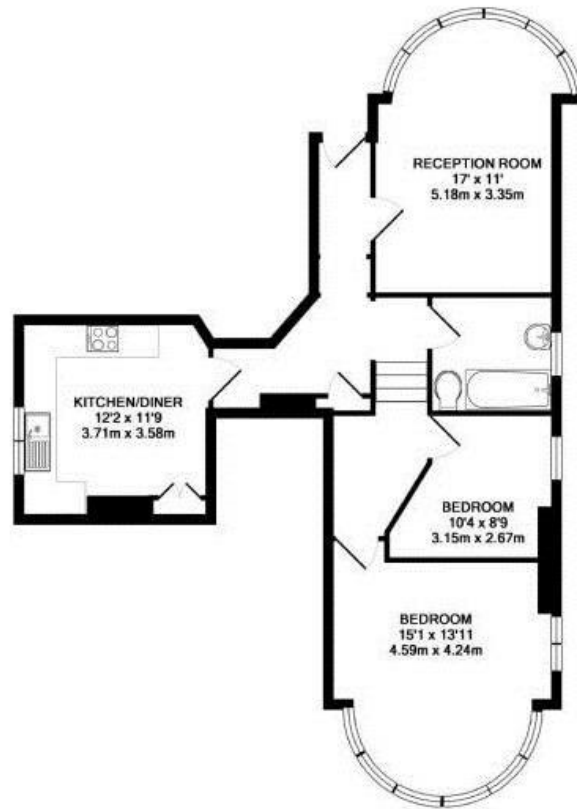
Tastefully presented with light neutral decor, large bay windows, high ceilings, wood flooring and quality fixtures and fittings, this appealing property offers 783 sq ft of adaptable living space with a private entrance and direct rear access onto a patio and the lawned communal gardens.

Entrance at the rear of the property opens into the hallway with doors to the spacious bay fronted living room, the fully fitted kitchen/dining room and the modern family bathroom. Steps in the hallway lead up to the 2 bedrooms at the front of the property.

Located just 0.8 miles from Bushy Park, Teddington town centre and Teddington and Hampton Wick train stations with rail links to Waterloo.
EPC Rating E

- Ground Floor 2 Bedroom Conversion Flat
- Well presented Throughout
- 783 Sq Ft of Light Filled Living Space
- Teddington River Roads Area
- Spacious Living Room and Kitchen/Breakfast Room
- Shared Communal Gardens
- 0.8 Miles from Teddington and Hampton Wick Train Stations





BROOM WARREN, TW11
TOTAL APPROX. FLOOR AREA 783 SQ.FT. (72.7 SQ.M.)

a Websters Estate Agents 36 Broad Street, Teddington, Middlesex TW11 8QY

t 020 8614 6000

e sales@mywebsters.co.uk w mywebsters.co.uk

Disclaimer

These particulars, whilst believed to be accurate are set out as a general outline only for guidance and do not constitute any part of an offer or contract. Intending purchasers should not rely on them as statements of representation of fact, but must satisfy themselves by inspection or otherwise as to their accuracy. We have not carried out a detailed survey nor tested the services, appliances and specific fittings. Room sizes should not be relied upon for carpets and furnishings. The measurements given are approximate. No person in this firm's employment has the authority to make or give any representation or warranty in respect of the property.

