



Websters
estate agents

Clonmel Road, Teddington, TW11 0SR

Viewings from Saturday 13th June with Best and Final offers on Monday 29th June.

Mid terrace 4 bedroom family home just 0.3 miles from highly acclaimed St James Catholic and Stanley Primary Schools and only 0.5 miles from Waldegrave Girls School.

Immaculately presented throughout and fully refurbished/loft converted to an impressive standard with high specification fixtures, fittings, floorings and lighting, luxury bathrooms and a stunning integrated kitchen. Offering 1384 sq ft of stylish, light and neutral living space with a welcoming contemporary feel, over 3 floors.

Front porch opens into the hallway with doors to the bay fronted living room and the kitchen/dining/family room. This delightful dual aspect open plan living space has beautiful wooden flooring, feature fireplaces and built in storage. Large doors open onto the lovely landscaped garden with patio, lawn, shed storage and rear access.

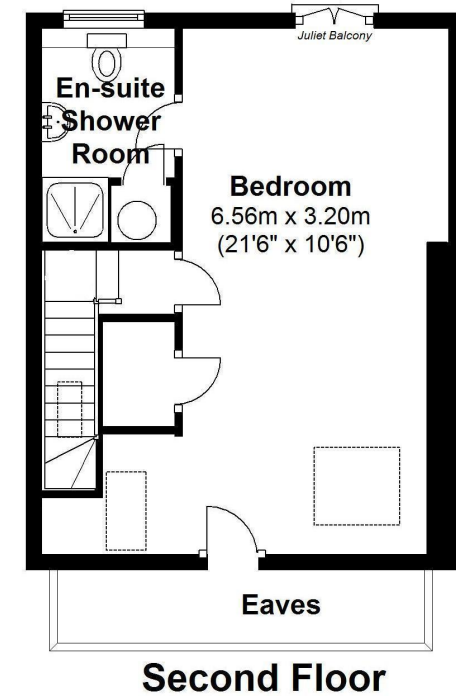
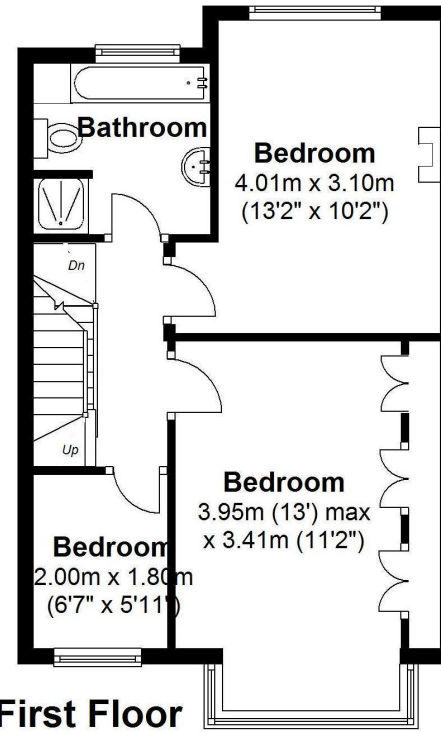
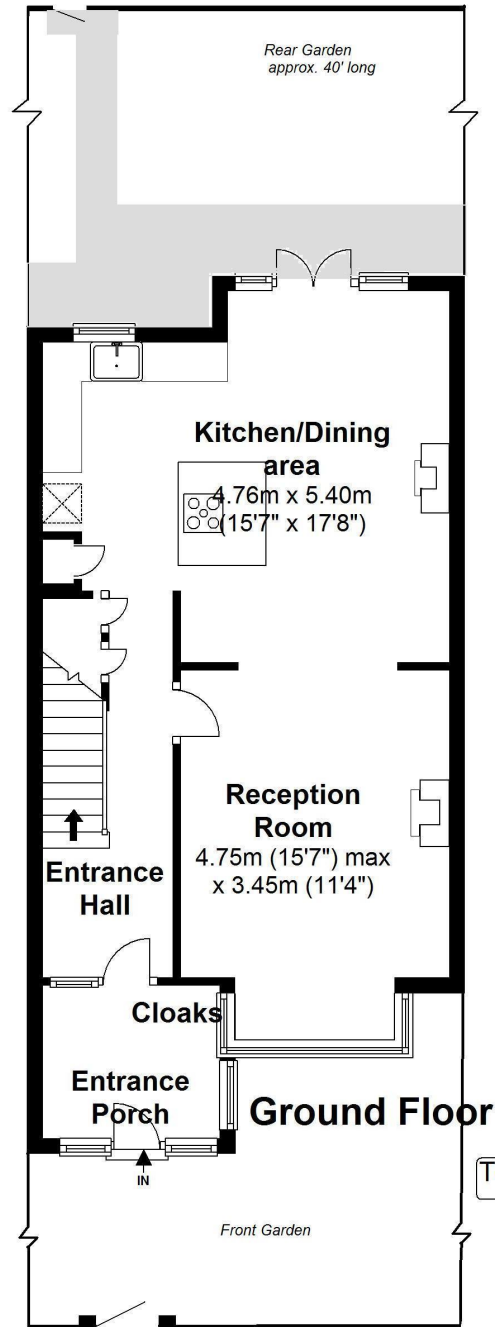
On the first floor are 3 bedrooms and the luxury 4 piece bathroom with stairs up to the master bedroom with an ensuite shower room, Juliette balcony and eaves storage.

With unrestricted road parking and located 150 metres from Fulwell train station, 0.3 miles from Hampton Hill High Street and just 0.9 miles from Teddington town centre.
EPC Rating E

- Immaculate Mid Terrace Family Home
- Popular Residential Teddington Location
- 4 Bedrooms and 2 Luxury Bathrooms
- Fabulous Open Plan Living Space
- Delightful Landscaped Rear Garden
- 1384 Sq Ft of Living Space over 3 Floors
- 0.5 Miles from Waldegrave Girls School
- 0.3 Miles from Hampton Hill High Street



Clonmel Road, Teddington



Total Floor Area approx. = 1,384 Sq.Feet (128.57sq.metres)
Copyright epcertificate.com

a Websters Estate Agents 36 Broad Street, Teddington, Middlesex TW11 8QY

t 020 8614 6000

e sales@mywebsters.co.uk w mywebsters.co.uk

Disclaimer
These particulars, whilst believed to be accurate are set out as a general outline only for guidance and do not constitute any part of an offer or contract. Intending purchasers should not rely on them as statements of representation of fact, but must satisfy themselves by inspection or otherwise as to their accuracy. We have not carried out a detailed survey nor tested the services, appliances and specific fittings. Room sizes should not be relied upon for carpets and furnishings. The measurements given are approximate. No person in this firm's employment has the authority to make or give any representation or warranty in respect of the property.

