



Websters
estate agents

30 Belmont Road, Twickenham, TW2 5DA

Viewings from Saturday 27th June

Maisonette with 2 bedrooms arranged over 3 floors in a brand new development of 8 luxury conversion apartments in a stunning period property in a quiet residential cul-de-sac 0.4 miles from Twickenham Green, local shops, bars and restaurants and only 0.1 mile from closest bus stop with excellent transport links towards Heathrow and London.

Front door access from the left side of the building leads into the hallway of this 800sq ft property. A door opens to a bedroom with ensuite bathroom and stairs leadup to the kitchen/living room on the first floor. On the second floor is a further bedroom with en-suite shower facilities.

To the front is a private west facing garden. Service building to the rear provides for bike and refuse/recycling storage for all apartments and there is a shared courtyard garden area to the rear of the building.

Final finish options are available (selection to be confirmed)

Located 0.8 miles from Strawberry Hill train station and the A316 with direct links into London and the M3

- 2 Bedroom Maisonette over 3 Floors
- Stunning Period Conversion Property
- 800 Sq Ft of Living Space
- Entrance to the Side of the Property
- Final Finish Options Available
- Residential Twickenham Location
- Private West Facing Garden



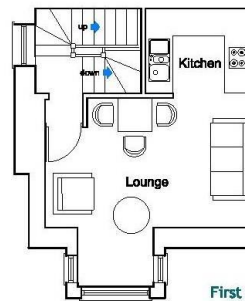
Belmont House
Belmont Road
Twickenham
TW2 5DA
FLATS FIRST & SECOND FLOORS



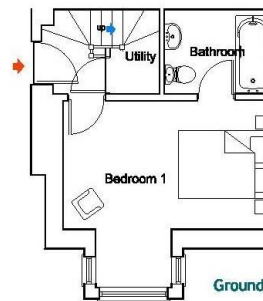
Belmont House
Belmont Road
Twickenham
TW2 5DA



Second Floor



First Floor



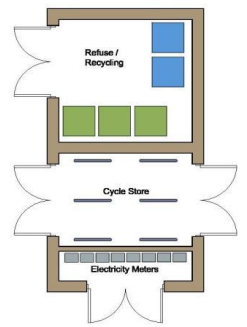
Ground Floor

a Websters Estate Agents 164 Heath Road, Twickenham, Middlesex TW1 4BN t 020 8892 3343 e sales@mywebsters.co.uk w mywebsters.co.uk

Disclaimer
 These particulars, whilst believed to be accurate are set out as a general outline only for guidance and do not constitute any part of an offer or contract. Intending purchasers should not rely on them as statements of representation of fact, but must satisfy themselves by inspection or otherwise as to their accuracy. We have not carried out a detailed survey nor tested the services, appliances and specific fittings. Room sizes should not be relied upon for carpets and furnishings. The measurements given are approximate. No person in this firm's employment has the authority to make or give any representation or warranty in respect of the property.



SITE LAYOUT



Service Building



**Belmont House
Belmont Road
Twickenham
TW2 5DA**

