



Websters
estate agents

30 Belmont Road, Twickenham, TW2 5DA

Viewings from Saturday 27th June

First Floor 2 bedroom apartment in a brand new development of 8 luxury apartments in a stunning period property in a quiet residential cul-de-sac 0.4 miles from Twickenham Green, local shops, bars and restaurants and only 0.1 mile from closest bus stop with excellent transport links towards Heathrow and London.

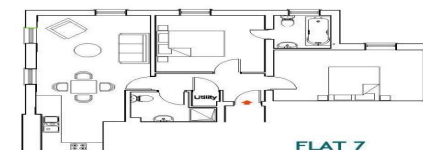
With shared entry phone system access at the left hand side of the property and overlooking the back/left side of the property (courtyard views), this lovely apartment offers 667sq ft of living space. Entrance hallway leads to 2 bedrooms one with en-suite bathroom, the shower room, utility cupboard and the dual aspect living room which is open plan with the kitchen.

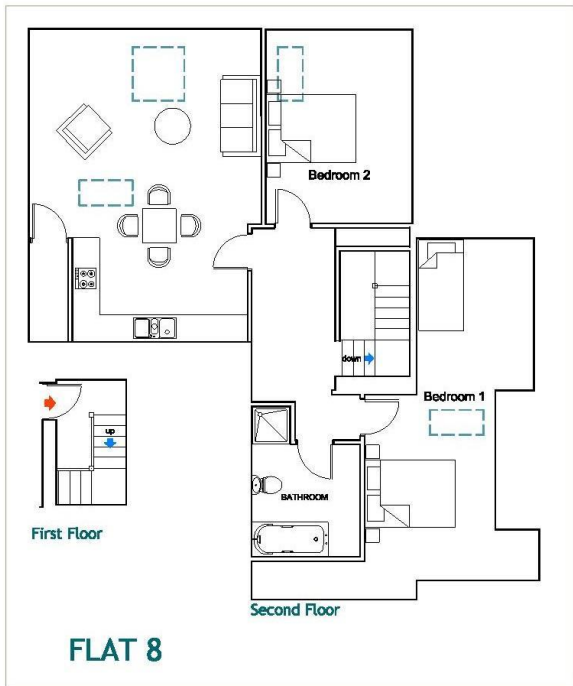
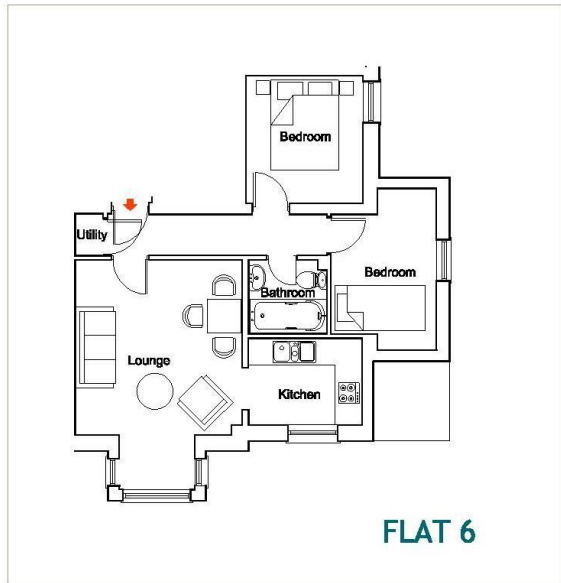
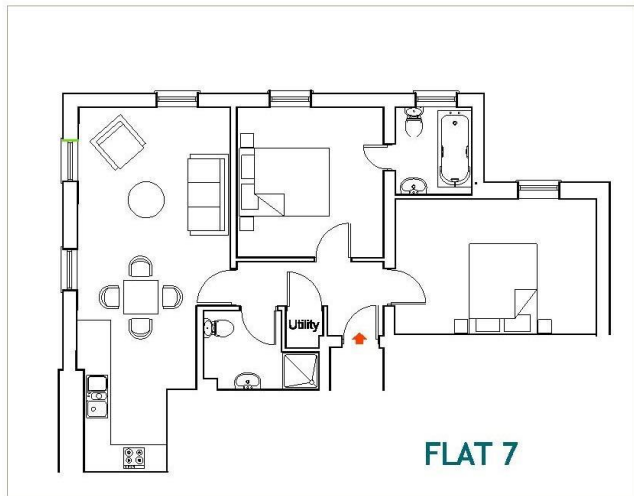
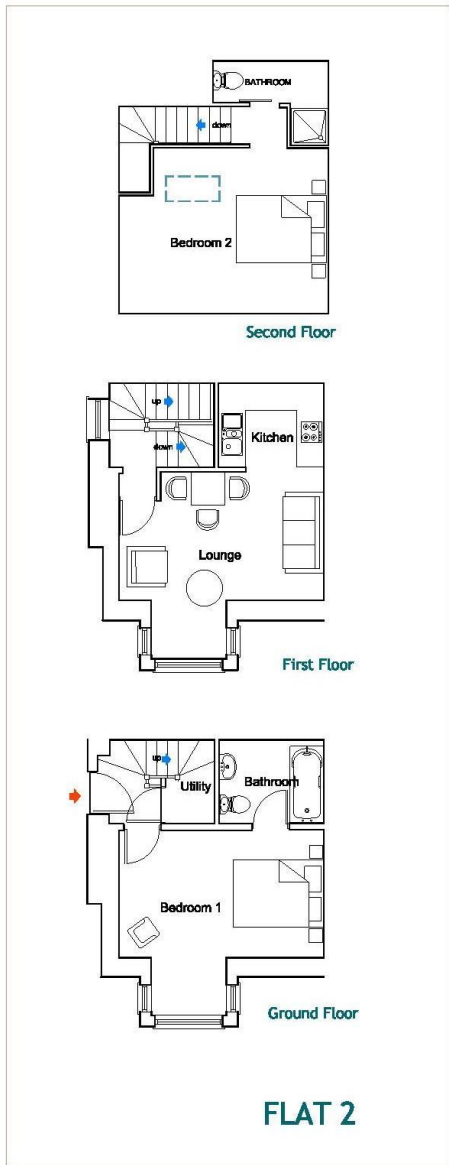
Service building to the rear provides for bike and refuse/recycling storage for the apartments and there is a shared courtyard garden area to the rear of the building

Final finish options are available (selection to be confirmed)

Located 0.8 miles from Strawberry Hill train station and the A316 with direct links into London and the M3

- First Floor 2 Bedroom Apartment
- Stunning Period Conversion Property
- 667 Sq Ft of Living Space
- Secure Access and Courtyard Views
- Final Finish Options Available
- Residential Twickenham Location

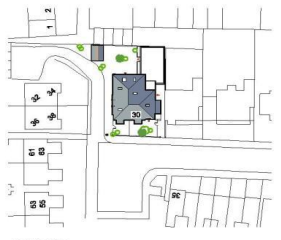




Belmont House
Belmont Road
Twickenham
TW2 5DA
FLATS FIRST & SECOND FLOORS

a Websters Estate Agents 164 Heath Road, Twickenham, Middlesex TW1 4BN t 020 8892 3343 e sales@mywebsters.co.uk w mywebsters.co.uk

Disclaimer
 These particulars, whilst believed to be accurate are set out as a general outline only for guidance and do not constitute any part of an offer or contract. Intending purchasers should not rely on them as statements of representation of fact, but must satisfy themselves by inspection or otherwise as to their accuracy. We have not carried out a detailed survey nor tested the services, appliances and specific fittings. Room sizes should not be relied upon for carpets and furnishings. The measurements given are approximate. No person in this firm's employment has the authority to make or give any representation or warranty in respect of the property.



Belmont House
 Belmont Road
 Twickenham
 TW2 5DA

