



# Staines Road, Twickenham, TW2 5AY

Semi detached 5 bedroom family home with driveway parking for 3 cars, a garage and a south facing 150ft garden. Only 0.6 miles from Twickenham Green, local shops, restaurants and the A316 with direct access to the M3 and central London.

Extended, loft converted and refurbished throughout to provide 1690 sq ft of family living space over 3 floors. This well proportioned home is in excellent decorative order with high specification fixtures and fittings, solid wood flooring and double glazed windows/doors.

Entrance hallway leads to the bay fronted living room, a w.c and into the kitchen/dining room/conservatory area at the rear. This delightful room has fully fitted units, roof windows and doors opening directly onto the raised sun deck. Steps lead down to the landscaped garden with patios, lawn, mature planting and access to the brick built garage and storage shed.

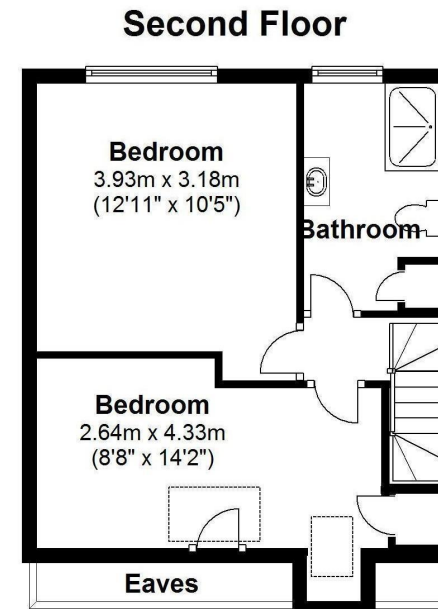
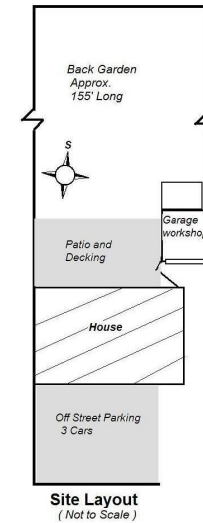
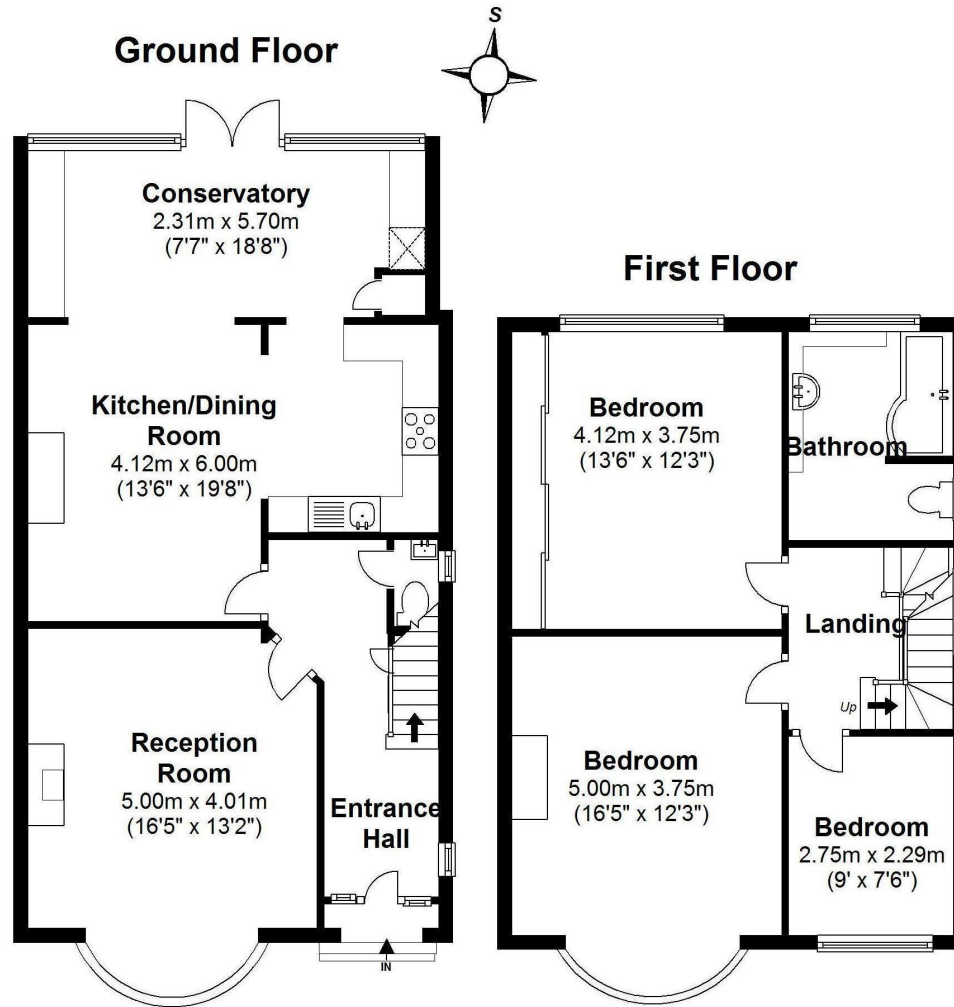
On the first floor are 3 bedrooms and the family bathroom with stairs up to 2 further bedrooms, eaves storage and the shower room.

To the front of the property is driveway parking for 3 cars and shared side driveway access to the garage and a gate into the rear garden.

Located 0.8 miles from Strawberry Hill train station and less than 0.4 miles from the highly regarded Trafalgar Primary School and Waldegrave Girls School/Sixth Form.  
EPC Rating E

- Semi Detached 5 Bedroom House
- Garage and Driveway Parking for 3 Cars
- Stunning 150 Ft South Facing Garden
- Extended, Loft Converted and Refurbished
- Living Room, Kitchen/Family Room and Conservatory
- 1690 Sq Ft of Stylish Living Space over 3 Floors
- 0.4 Miles from Waldegrave Girls School





Total Floor Area approx.= 1,690 Sq.Feet (157sq.metres)  
Copyright epcertificate.com

**a** Websters Estate Agents 164 Heath Road, Twickenham, Middlesex TW1 4BN    **t** 020 8892 3343    **e** sales@mywebsters.co.uk    **w** mywebsters.co.uk

**Disclaimer**  
 These particulars, whilst believed to be accurate are set out as a general outline only for guidance and do not constitute any part of an offer or contract. Intending purchasers should not rely on them as statements of representation of fact, but must satisfy themselves by inspection or otherwise as to their accuracy. We have not carried out a detailed survey nor tested the services, appliances and specific fittings. Room sizes should not be relied upon for carpets and furnishings. The measurements given are approximate. No person in this firm's employment has the authority to make or give any representation or warranty in respect of the property.

