



2B

2A

Websters
estate agents

Somerset Road, Teddington, TW11 8RS

Semi Detached Modern Build 4 bedroom family home with driveway parking for 2 cars. Situated 125 metres from St Mary's and St Peter's Primary, 0.2 miles from Turing House Secondary, 0.5 miles from Stanley Primary and 0.9 miles from Waldegrave Girls School.

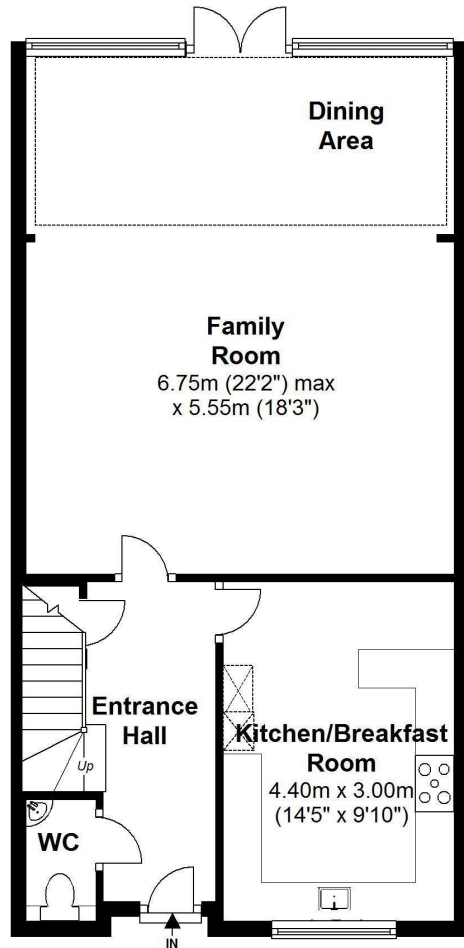
With vacant possession and no onward chain, offering 1723 sq ft of well proportioned light filled living space over 3 floors with high specification fixtures, fittings and flooring, double glazed windows and doors, modern neutral decor and a lovely south east facing garden.

The tiled entrance hallway leads to a w.c, the bespoke fully integrated kitchen/breakfast room at the front and the open plan living/family/dining room. This welcoming space has wood flooring, built in storage units, a wood burning style gas stove and full width glass roof at the rear. Double doors open directly onto the powered and lit garden with a raised sundeck, steps down to the recently fitted artificial lawn, mature planting, shed storage and side access to the driveway with space for 2 cars and a lockable bike/storage shed. On the first floor are 2 double bedrooms both with an en-suite bathroom and stairs up to 2 further large double bedrooms, the family bathroom, a laundry/store room and loft storage access.

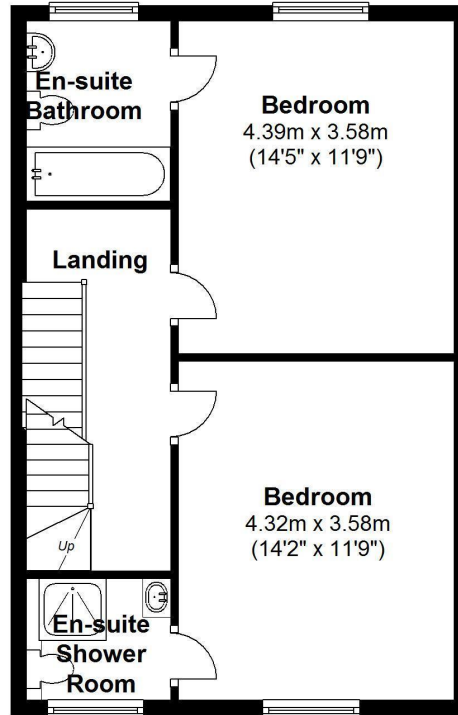
Located 0.3 miles from Teddington town centre, 0.5 miles from Bushy Park and 0.6 miles from Teddington train station.
EPC Rating C

- Semi Detached Modern Build Family Home
- 4 Large Double Bedrooms and 3 Bathrooms
- Driveway Parking and South East Facing Garden
- Vacant Possession and No Chain
- 1723 Sq Ft of Living Space over 3 Floors
- Open Plan Living Room and Separate Kitchen
- 0.6 Miles from Teddington Station
- Within 0.9 Miles of Popular Borough Schools

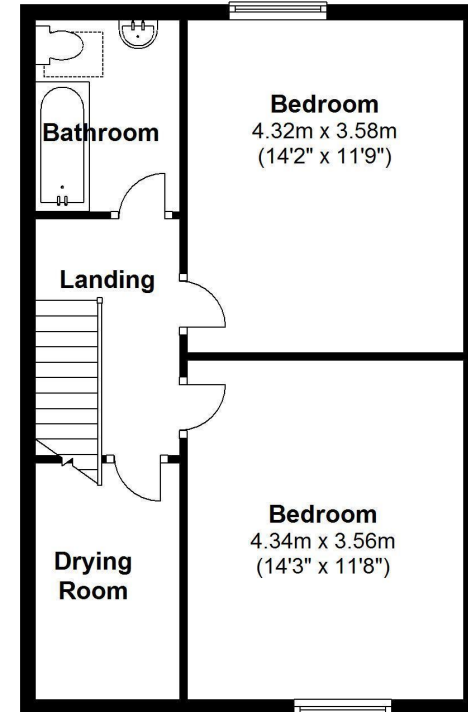




Ground Floor



First Floor



Second Floor

Total Floor Area approx.= 1,723 Sq.Feet (160 sq.metres)

Copyright epcertificate.com

