



Websters
estate agents
020 8992 3343
mywebsters.co.uk For Sale

84

Websters
estate agents

Gould Road, Twickenham, TW2 6RW

Mid terrace 3 double bedroom Victorian home in a popular location 0.3 miles from Twickenham Green, Archdeacon Cambridge and Trafalgar Primary Schools and only 0.7 miles from Waldegrave Girls School/Sixth Form.

Well presented, with wood style flooring, neutral decor and high specification fixtures and fittings throughout, this lovely home has been extended and loft converted to offer 1039sq ft of light and airy living space over 3 floors.

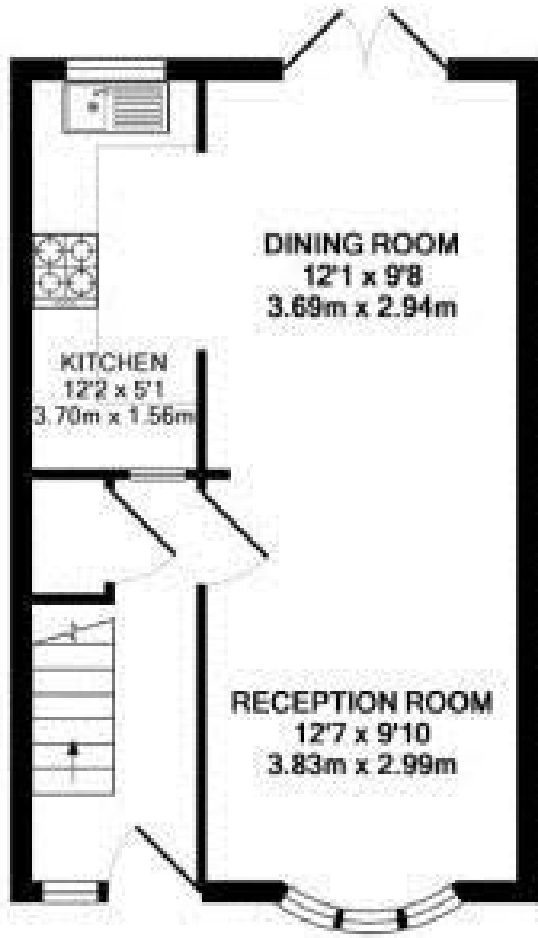
Entrance hallway opens into the dual aspect living/dining room with open plan access into the fitted kitchen. Doors at the rear open onto the paved courtyard garden with planting and shed storage. On the first floor are 2 double bedrooms and the family bathroom with stairs up to the master bedroom with a study area, an en-suite shower room, juliet balcony and eaves storage.

Unrestricted road parking and located 0.7 miles from Strawberry Hill Station and only 1 mile from Twickenham mainline train station.

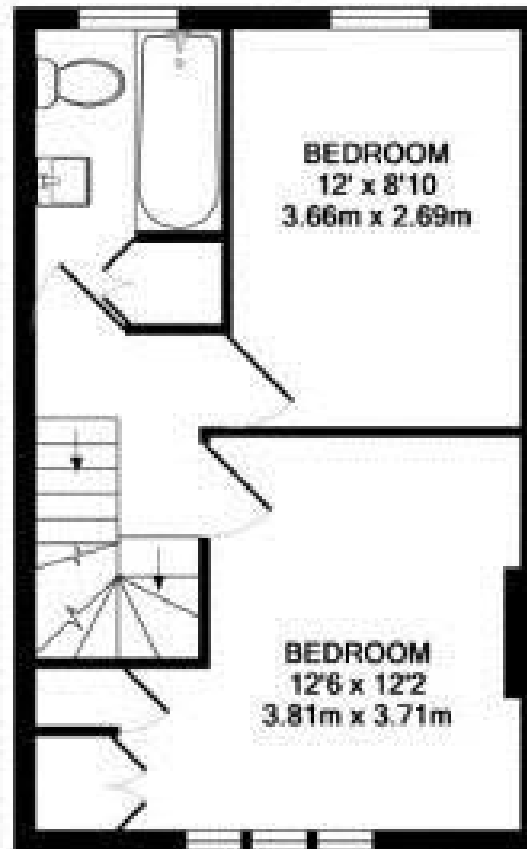
EPC Rating C

- Mid Terrace Victorian Family Home
- 3 Double Bedrooms and 2 Bathrooms
- Dual Aspect Open Plan Living Space
- 1039 Sq Ft of Living Space over 3 Floors
- Immaculately Presented Throughout
- Extended and Loft Converted
- 0.3 Miles from Twickenham Green
- 0.7 Miles from Waldegrave Girls School

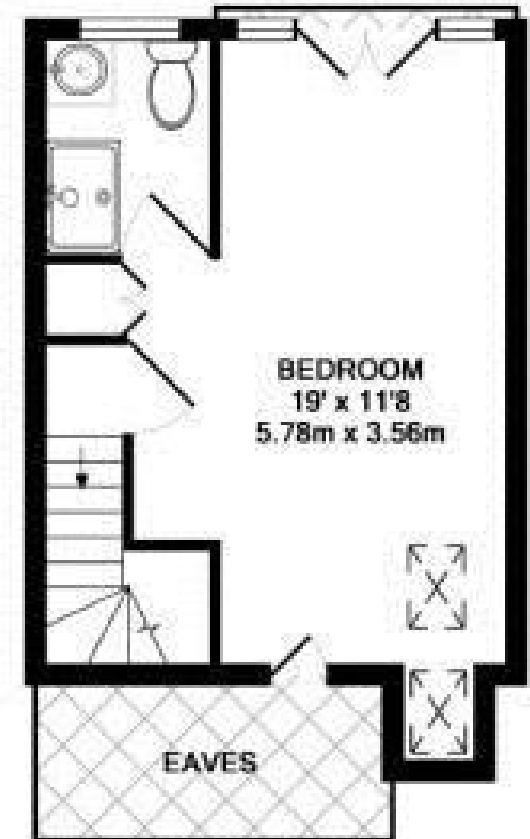




GROUND FLOOR
APPROX. FLOOR
AREA 379 SQ.FT.
(35.2 SQ.M.)



1ST FLOOR
APPROX. FLOOR
AREA 372 SQ.FT.
(34.6 SQ.M.)



2ND FLOOR
APPROX. FLOOR
AREA 288 SQ.FT.
(26.7 SQ.M.)

GOULD ROAD, TW2
TOTAL APPROX. FLOOR AREA 1039 SQ.FT. (96.5 SQ.M.)

a Websters Estate Agents 164 Heath Road, Twickenham, Middlesex TW1 4BN t 020 8892 3343 e sales@mywebsters.co.uk w mywebsters.co.uk

Disclaimer
These particulars, whilst believed to be accurate are set out as a general outline only for guidance and do not constitute any part of an offer or contract. Intending purchasers should not rely on them as statements of representation of fact, but must satisfy themselves by inspection or otherwise as to their accuracy. We have not carried out a detailed survey nor tested the services, appliances and specific fittings. Room sizes should not be relied upon for carpets and furnishings. The measurements given are approximate. No person in this firm's employment has the authority to make or give any representation or warranty in respect of the property.

