



Websters
estate agents

Albion Road, Twickenham, TW2 6QJ

Viewings by appointment from Saturday 30th January.

End of Terrace Victorian cottage in a desirable location with an 80ft south facing garden and front driveway parking. Situated only 125 metres from Twickenham Green, local shops, bars and restaurants.

Offering potential to extend, fully loft convert (subject to Planning Permission and Building Regulations) and update throughout. This charming property currently offers 1082 sq ft of living space over 3 floors.

Entrance lobby leads into the open plan living/dining room with access into the fitted kitchen/conservatory/family room at the rear. Doors open onto the pretty south facing 80ft garden with a patio, lawn and mature planting.

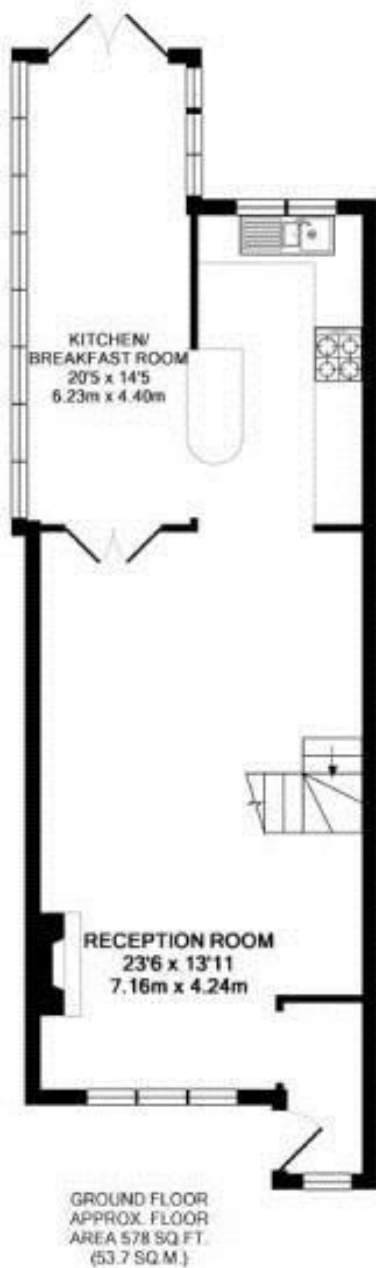
On the first floor are 2 bedrooms and the family bathroom with stairs in the rear bedroom upto a loft room/ bedroom, shower room with a dormer, velux windows and eaves storage.

Located 0.8 miles from Twickenham mainline train station and Waldegrave Girls School/Sixth Form and less than 0.5 miles from Archdeacon and Trafalgar Primary Schools and St Richard Reynolds Secondary School.

EPC Rating F

- End of Terrace Victorian Cottage
- 2/3 Bedrooms and 2 Bathrooms
- Open Plan Living Room
- Potential to Extend and Loft Convert (stpp)
- 80Ft South Facing Garden and Driveway Parking
- Popular Twickenham Green Location
- 0.8 Miles from Twickenham Mainline Station





ALBION ROAD, TW2
TOTAL APPROX. FLOOR AREA 1082 SQ. FT. (100.5 SQ.M.)



a Websters Estate Agents 164 Heath Road, Twickenham, Middlesex TW1 4BN t 020 8892 3343 e sales@mywebsters.co.uk w mywebsters.co.uk

Disclaimer
These particulars, whilst believed to be accurate are set out as a general outline only for guidance and do not constitute any part of an offer or contract. Intending purchasers should not rely on them as statements of representation of fact, but must satisfy themselves by inspection or otherwise as to their accuracy. We have not carried out a detailed survey nor tested the services, appliances and specific fittings. Room sizes should not be relied upon for carpets and furnishings. The measurements given are approximate. No person in this firm's employment has the authority to make or give any representation or warranty in respect of the property.

