



Websters
estate agents
0200 999 2222 For Sale
www.websters.co.uk

JORDANS MEWS

Websters
estate agents

Jordan Mews, Strawberry Hill, TW2 5UA

Ground floor, purpose built, 2 bedroom maisonette with private front and rear gardens and off -street, allocated parking. Situated in one of Strawberry Hill's most desirable roads 0.2 miles from Strawberry Hill train station and local shops.

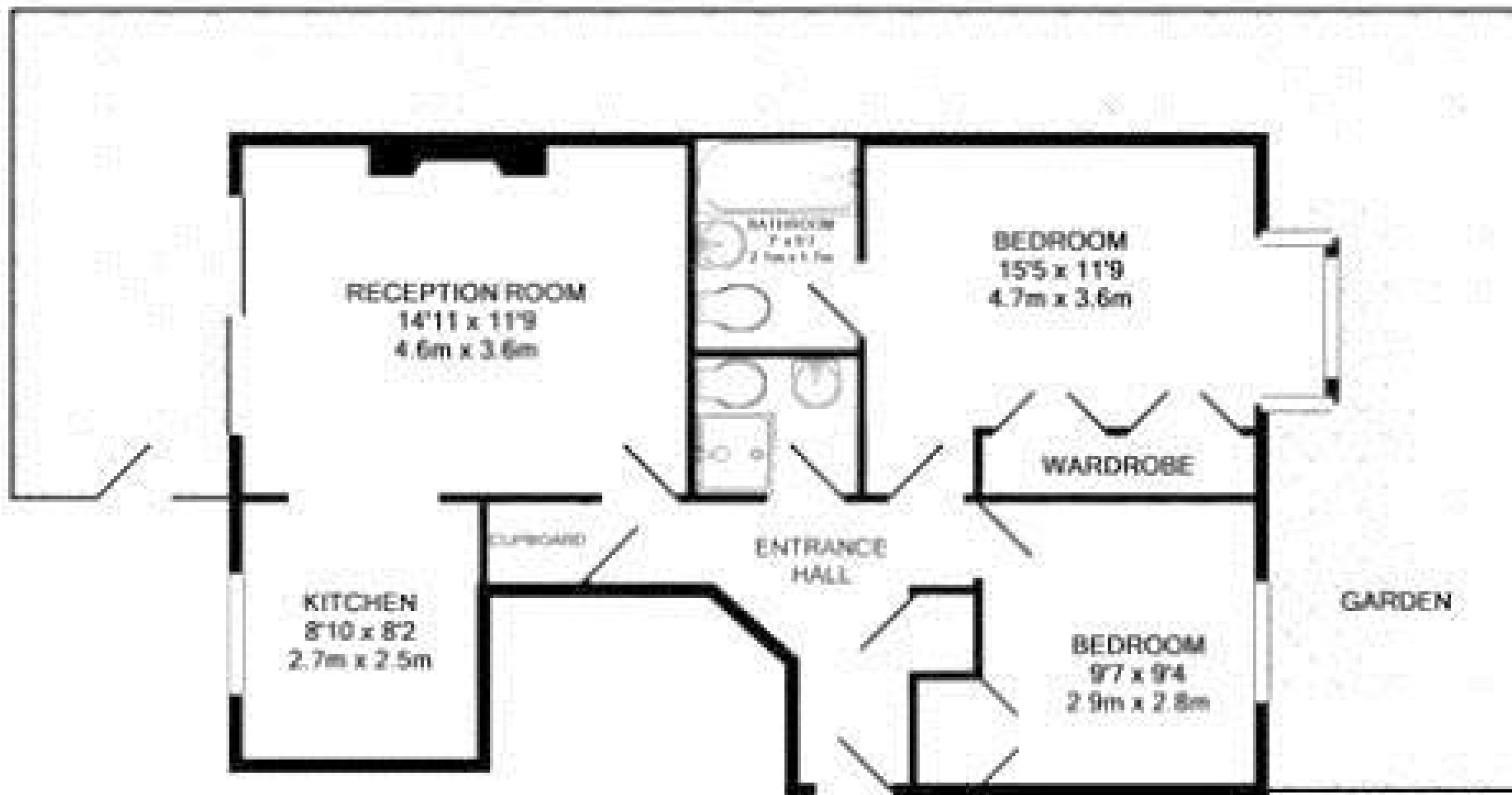
Tastefully presented and well maintained throughout with modern fixtures and fittings, pleasing light neutral décor and 662 sq ft of well balanced and adaptable living space in a gated courtyard development.

Private front door opens into the entrance hallway with storage cupboards and doors to the 2 double bedrooms - one with en-suite facilities, the bathroom and the spacious living room with open access into the fitted kitchen. Doors in the living room open directly onto the private wrap around garden with paving and mature planting.

Located 0.5 miles from Twickenham town centre, Radnor Gardens and the River Thames, 0.3 miles from Archdeacon Cambridge Primary School and just 0.6 miles from St James Primary and Waldegrave Girls Secondary School.
EPC Rating C

- Ground Floor 2 Bedroom Maisonette
- Desirable Strawberry Hill Location
- 662 Sq Ft of Spacious Living Space
- Open Plan Living Room/Kitchen
- Family Bathroom and En-Suite Shower Room
- Private Garden and Allocated Parking
- 0.2 Miles from Strawberry Hill Train Station





TOTAL APPROX. FLOOR AREA 662 SQ. FT. (61.5 SQ. M.)

a Websters Estate Agents 164 Heath Road, Twickenham, Middlesex TW1 4BN t 020 8892 3343 e sales@mywebsters.co.uk w mywebsters.co.uk

Disclaimer

These particulars, whilst believed to be accurate are set out as a general outline only for guidance and do not constitute any part of an offer or contract. Intending purchasers should not rely on them as statements of representation of fact, but must satisfy themselves by inspection or otherwise as to their accuracy. We have not carried out a detailed survey nor tested the services, appliances and specific fittings. Room sizes should not be relied upon for carpets and furnishings. The measurements given are approximate. No person in this firm's employment has the authority to make or give any representation or warranty in respect of the property.

