



Websters
estate agents

Staines Road, Twickenham, TW2 5BG

First Floor, 2 bedroom maisonette in an attractive Victorian property with a private garden just 0.1 mile from Twickenham Green, local shops, bars and restaurants.

Tastefully presented throughout with double glazed windows and high quality fixtures, fittings, lighting and flooring. With gated access and an external staircase leading up to the front door at the side of the property, this light and airy home currently offers 505 sq ft of living space.

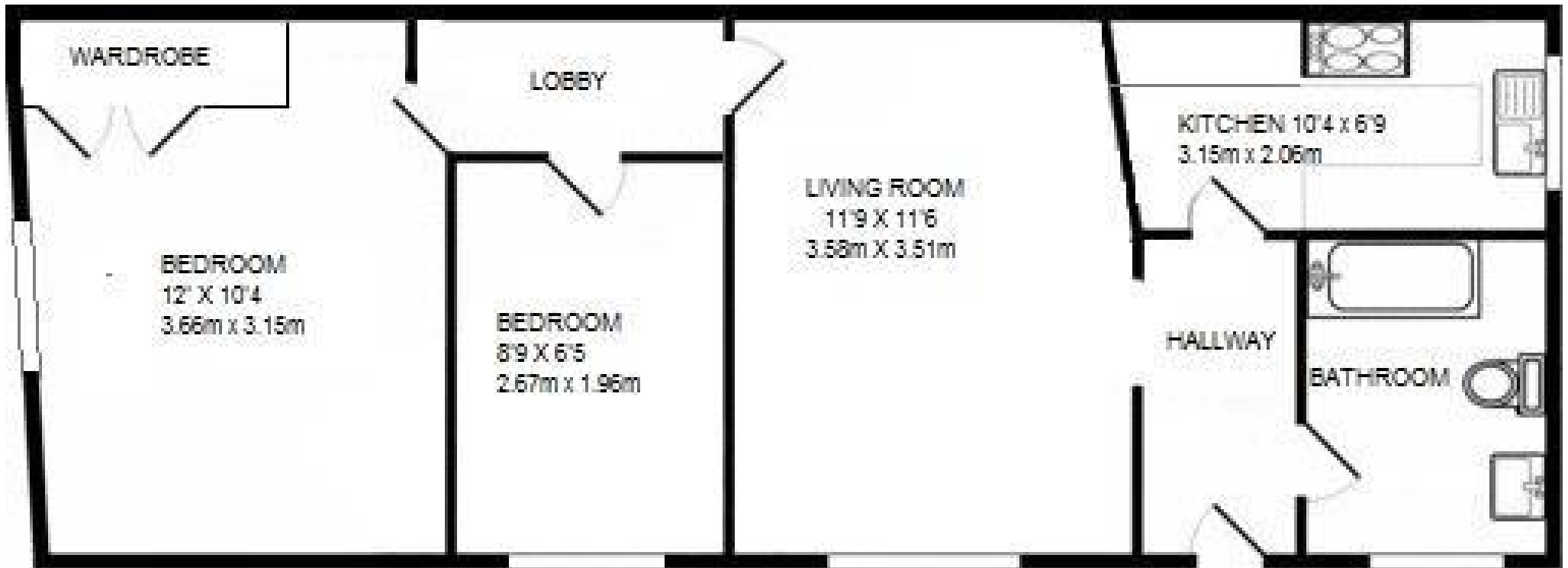
The entrance hallway opens into the stylish family bathroom and the modern fitted kitchen. Steps lead up into the living/dining room with access to a lobby area with doors to the 2 bedrooms, the master with built in storage.

Located 0.3 miles from Kneller Gardens and the River Crane, 0.6 miles from Strawberry Hill train station and just only 1 mile from Twickenham mainline station.

EPC Rating D

- First Floor 2 Bedroom Conversion Maisonette
- Spacious Living Room and Separate Kitchen
- Tastefully Presented Throughout
- Private Entrance and Gated Garden
- Currently 505 Sq Ft of Living Space
- Attractive Period Property
- 0.1 Mile from Twickenham Green





37a Staines Road

Total Floor Area 505sq ft 47m²

[a](#) Websters Estate Agents 164 Heath Road, Twickenham, Middlesex TW1 4BN [t](#) 020 8892 3343 [e](#) sales@mywebsters.co.uk [w](#) mywebsters.co.uk

Disclaimer

These particulars, whilst believed to be accurate are set out as a general outline only for guidance and do not constitute any part of an offer or contract. Intending purchasers should not rely on them as statements of representation of fact, but must satisfy themselves by inspection or otherwise as to their accuracy. We have not carried out a detailed survey nor tested the services, appliances and specific fittings. Room sizes should not be relied upon for carpets and furnishings. The measurements given are approximate. No person in this firm's employment has the authority to make or give any representation or warranty in respect of the property.

