



Websters  
estate agents



# Glamorgan Road, Hampton Wick, KT1 4HP

Viewings by appointment from Saturday 27th February.

First Floor 1 bedroom apartment in a stunning detached Victorian property with a secure entry phone system, maintained communal areas and garden. Situated in a quiet residential area just 0.1 mile from Hampton Wick Station.

Well presented throughout, this delightful apartment has a 1/5 Share of Freehold and offers 431 sq ft of light filled living space with sash windows, charming period features and views over the rear garden.

Accessed from the side of the property via an imposing communal hallway with period tiled floor, high ceilings and stairs up to the first floor.

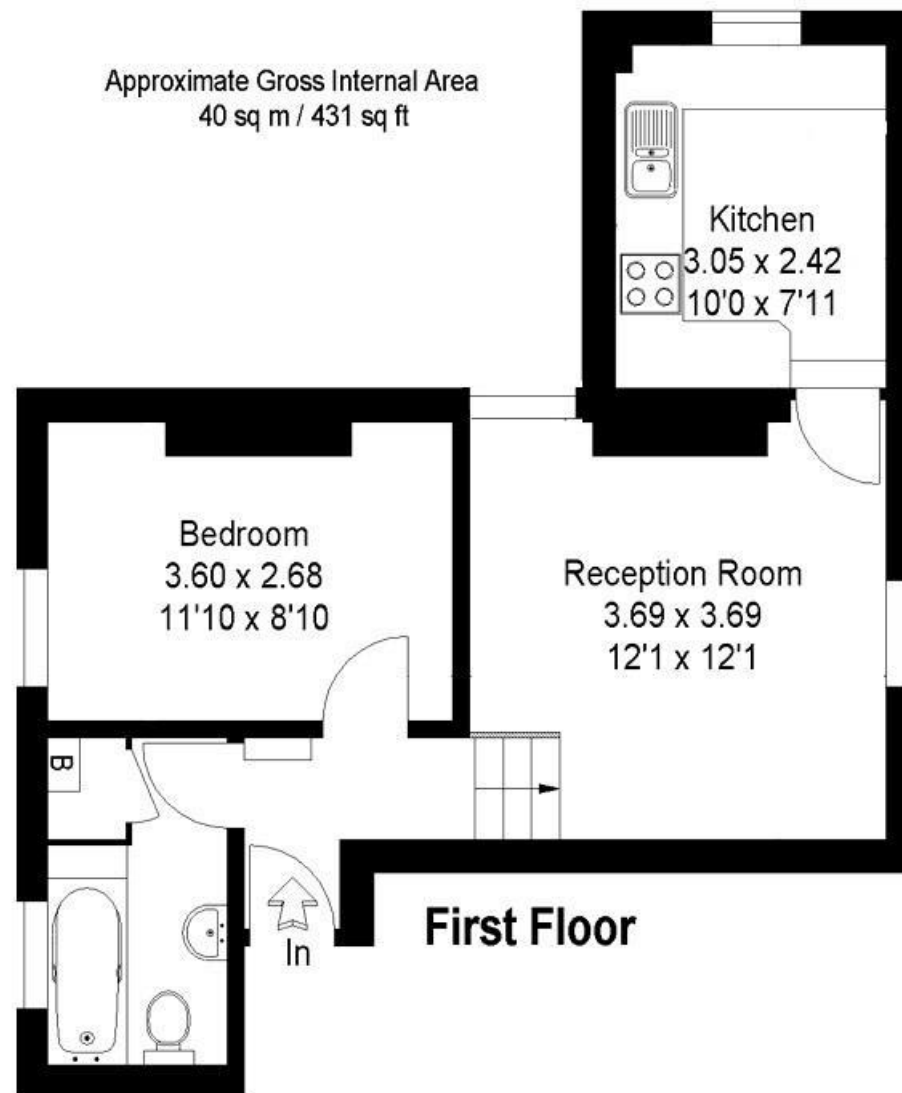
The entrance hallway leads to the double bedroom and the bathroom with steps down into the dual aspect living room with a door into the fitted kitchen.

Located 0.3 miles from Bushy Park and 0.5 miles from Kingston town centre and the River Thames with towpath walks to Hampton Court Palace and Richmond upon Thames.

EPC Rating D

- First Floor 1 Bedroom Conversion Apartment
- Share of Freehold
- Secure Entry Phone and Communal Gardens
- 431 Sq Ft of Well Balanced Living Space
- Stunning Detached Period Property
- Dual Aspect Living Room and Seperate Kitchen
- 0.1 Mile from Hampton Wick Station
- Popular Hampton Wick Location





## Glamorgan Road, Hampton Wick

a Websters Estate Agents 36 Broad Street, Teddington, Middlesex TW11 8QY

t 020 8614 6000

e sales@mywebsters.co.uk w mywebsters.co.uk

**Disclaimer**

These particulars, whilst believed to be accurate are set out as a general outline only for guidance and do not constitute any part of an offer or contract. Intending purchasers should not rely on them as statements of representation of fact, but must satisfy themselves by inspection or otherwise as to their accuracy. We have not carried out a detailed survey nor tested the services, appliances and specific fittings. Room sizes should not be relied upon for carpets and furnishings. The measurements given are approximate. No person in this firm's employment has the authority to make or give any representation or warranty in respect of the property.



