



003

Websters  
estate agents

# Sunnyside Rd, Teddington, TW11 0RT

Semi detached 4 bedroom Victorian family home in a highly regarded quiet residential Teddington location just 0.4 miles from Fulwell train station and Bushy Park.

With vacant possession and no onward chain, this desirable home is immaculately presented throughout and offers 1190 sq ft of well proportioned living space over 3 floors with high specification fixtures and fittings, double glazed windows and modern contemporary decor.

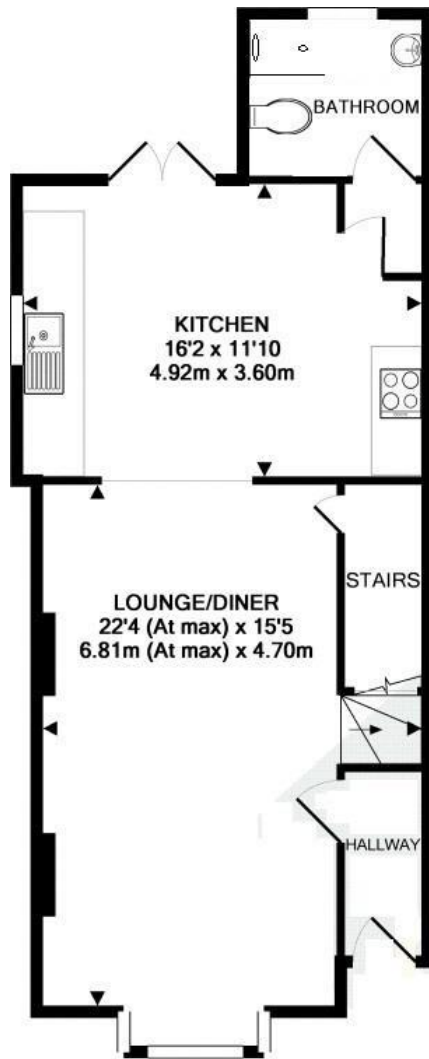
Entrance hallway leads into the open plan family living room with access into the kitchen/breakfast room at the rear with fitted units, tiled floor, a utility area and door to a shower room. Doors open onto the pretty garden with sun deck, lawn, powered summer house/home office and side access.

On the first floor are 3 double bedrooms and the family bathroom with stairs up to the master bedroom with en suite facilities and eaves storage.

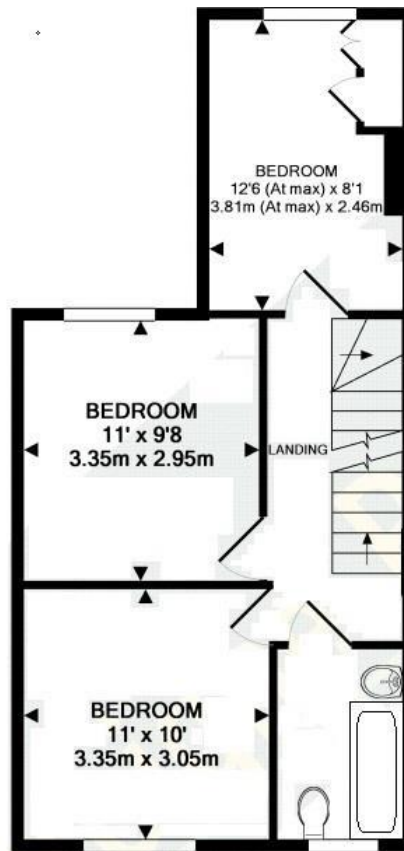
Located 0.5 miles from Hampton Hill, 0.7 miles from Teddington town centre, 0.4 miles from the popular Stanley and St Marys/St Peters Primary Schools and just 0.6 miles from Waldegrave Girls School/Sixth Form  
EPC Rating E

- Semi Detached Victorian Family Home
- 4 Double Bedrooms and 3 Bathrooms
- Vacant Possession and No Chain
- 1190 Sq Ft of Living Space over 3 Floors
- Open Plan Living/Family Room
- Garden with Summer House/Office
- 0.7 Miles from Teddington Town Centre
- Immaculately Presented Throughout





GROUND FLOOR  
APPROX. FLOOR  
AREA 556 SQ.FT.  
(51.6 SQ.M.)



1ST FLOOR  
APPROX. FLOOR  
AREA 411 SQ.FT.  
(38.2 SQ.M.)

TOTAL APPROX. FLOOR AREA 1190 SQ.FT. (110.6 SQ.M.)



2ND FLOOR  
APPROX. FLOOR  
AREA 223 SQ.FT.  
(20.7 SQ.M.)

