



Websters
estate agents

7a May Road, Twickenham, TW2 6QW

Semi Detached 4 bedroom home with off street parking for 2 cars. Situated less than 100 metres from Twickenham Green, local shops, bars and restaurant and only 0.5 miles from Strawberry Hill train station.

Extended and loft converted to an impressive standard, this family home offers 1696 sq ft of well proportioned living space over 3 floors with potential to extend on the first floor to the side to create a second bathroom/dressing room (subject to Planning Permission and Building Regulations).

Well presented throughout with high quality fixtures and fittings, oak flooring, double glazed windows and doors and pleasing neutral decor.

Entrance hallway opens into the living room, the family room, a w.c and the kitchen. This spacious room has fitted units, granite worktops and doors opening into the conservatory/dining room at the rear. Doors lead directly on to the garden with a patio, lawn, storage shed and side access.

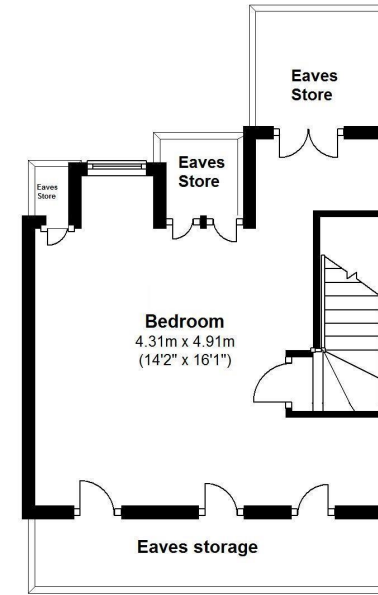
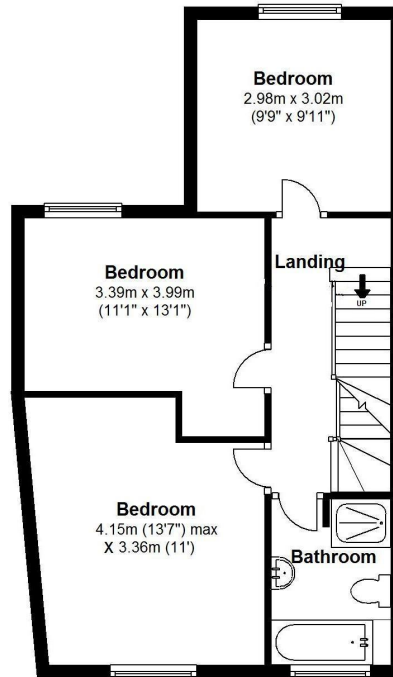
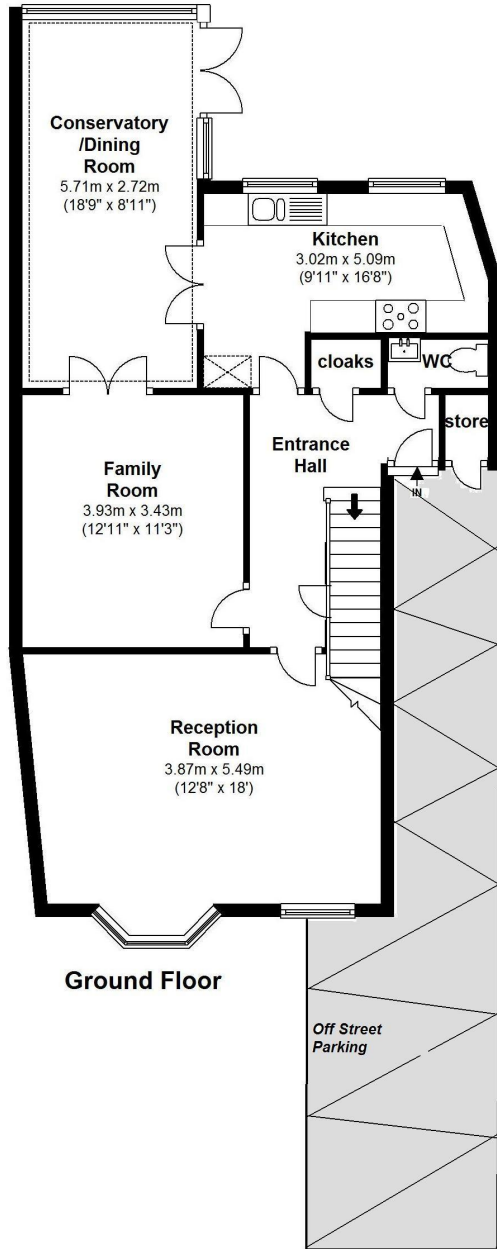
On the first floor are 3 double bedrooms and the family bathroom with stairs up to the 4th bedroom with garden views and eaves storage.

Located within 0.4 miles of Archdeacon and Trafalgar Primary Schools and 0.7 miles of St Richard Reynolds Primary/Secondary and Waldegrave Girls School/Sixth Form.

EPC Rating C

- Semi Detached 4 Bedroom Home
- Off Street Parking for 2 Cars
- Extended and Loft Converted to High Specification
- 1696 Sq Ft of Adaptable Living Space over 3 Floors
- 2 Living Rooms, Conservatory and Kitchen
- Pretty Rear Garden with Side Access
- 0.5 Miles from Strawberry Hill Station





Gross Floor area approx. = 1,696 Sq.Feet (157.58 sq.metres)

