



43

ALBAN HOUSE

Websters
estate agents

Strathearn Avenue, Whitton, TW2 6JT

Semi Detached 3 bedroom family home in a popular residential location with driveway parking, a garage and large rear garden. Situated just 0.6 miles from Nelson, St Edmund's and Heathfield Primary Schools.

With vacant possession, no chain and in need of modernisation. This charming home currently offers 1614 sq ft of living space over 2 floors with some original doors, parquet flooring and period features. Potential to re-configure, extend and loft convert (subject to Planning Permission and Building Control) to create a bespoke family home.

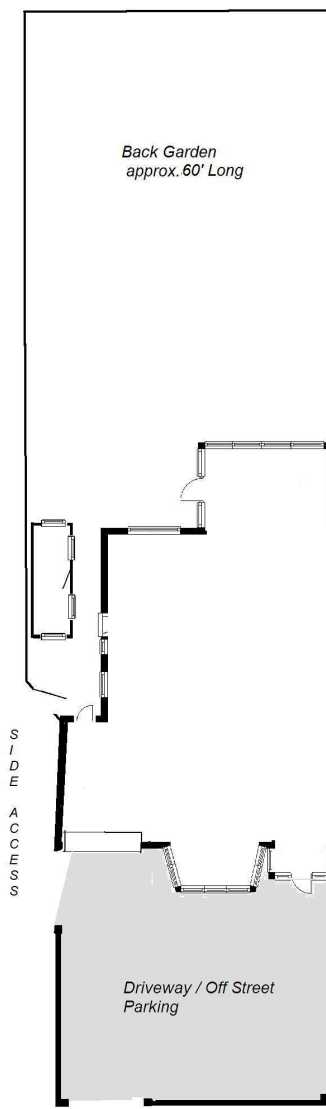
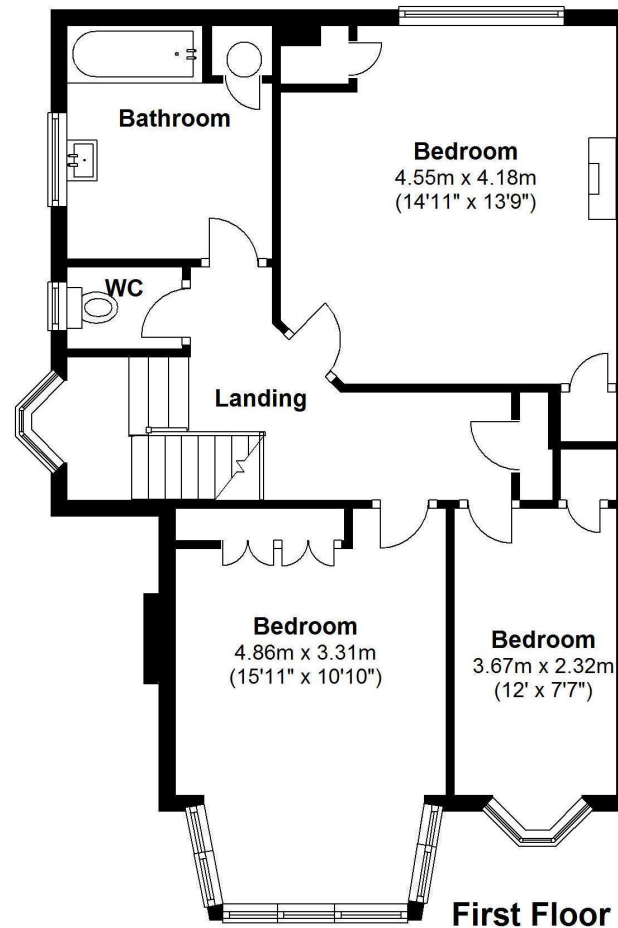
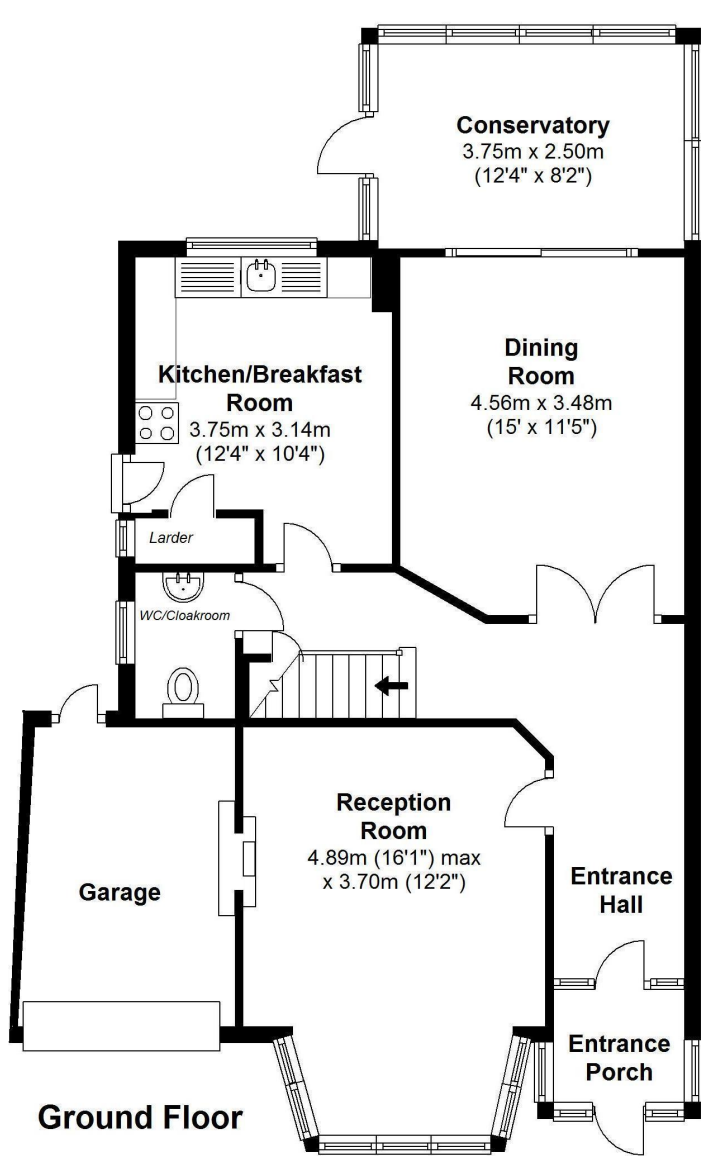
Front door opens into the hallway with doors to the living room, kitchen, a w.c and the dining room with a sliding door leading into the conservatory at the rear. Doors in the kitchen and conservatory open onto the garden with a patio, lawn, greenhouse, brick built storage/workshop and gated side access to the front driveway. On the first floor are 3 bedrooms the family bathroom.

Locates 0.3 miles from Whitton town centre and mainline train station and 0.4 miles from the A316 with direct access to the M3/M25 and into central London.

EPC Rating E

- Semi Detached 3 Bedroom House
- Vacant Possession and No Chain
- 1614 Sq Ft and In Need of Modernisation
- Potential to Extend/Loft Convert (stpp)
- 2 Living Rooms and Seperate Kitchen
- Driveway, Garage and Large Garden
- 0.3 Miles from Whitton Mainline Station





Total Floor Area approx.=1,614 Sq.Feet (150 sq.metres)
{ includes Garage }

Strathearn Avenue,Whitton

a Websters Estate Agents 164 Heath Road, Twickenham, Middlesex TW1 4BN t 020 8892 3343 e sales@mywebsters.co.uk w mywebsters.co.uk

Disclaimer
These particulars, whilst believed to be accurate are set out as a general outline only for guidance and do not constitute any part of an offer or contract. Intending purchasers should not rely on them as statements of representation of fact, but must satisfy themselves by inspection or otherwise as to their accuracy. We have not carried out a detailed survey nor tested the services, appliances and specific fittings. Room sizes should not be relied upon for carpets and furnishings. The measurements given are approximate. No person in this firm's employment has the authority to make or give any representation or warranty in respect of the property.

