



Websters
estate agents

Powder Mill Lane, Twickenham, TW2 6ED

End of Terrace 3 double bedroom family home with driveway parking and a 70ft rear garden. Situated 0.6 miles from Whitton town centre and mainline station and 0.2 miles from Heathfield Primary School and Crane Park.

Loft converted and refurbished by the current owners to a high standard with quality fixtures, fittings and flooring, double glazed windows and tasteful neutral decor. Offering 1055 sq ft of light and airy well proportioned living space over 3 floors.

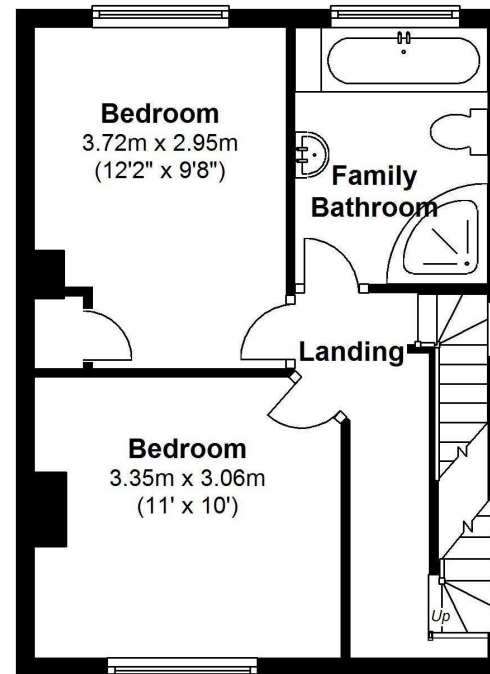
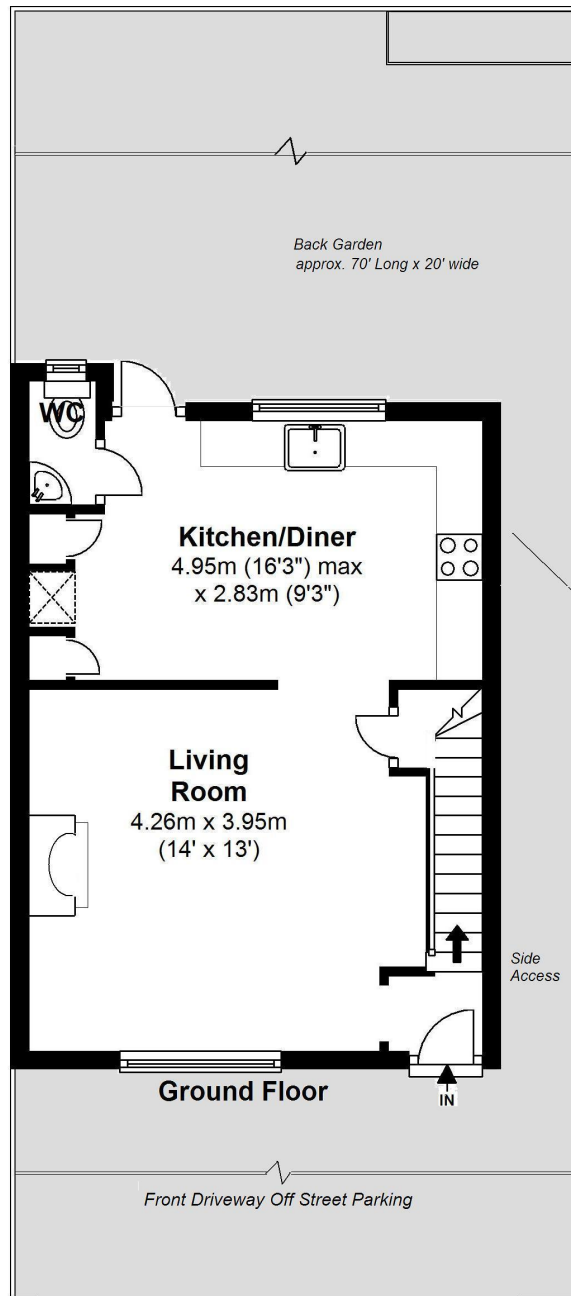
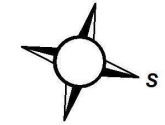
Entrance lobby leads into the spacious living room with access into the kitchen/dining room at the rear. This lovely room has fitted units, a dining area and doors to a w.c and storage. A door opens onto the garden with sun deck, lawn, summer house and gated side access to the front driveway parking. On the first floor are 2 double bedrooms and the family bathroom with stairs up to the master bedroom with an en-suite shower room and eaves storage.

Located 0.1 miles from the A316 with direct access to the M3/M25 and into central London and within 0.9 miles of Nelson and St Edmunds Primary and Waldegrave Girls School.

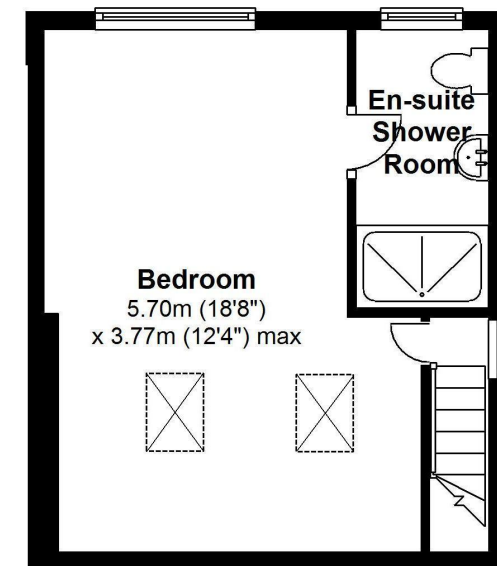
EPC Rating D

- End of Terrace Family Home
- 3 Double Bedrooms and 2 Bathrooms
- Driveway Parking for 2 Cars
- 70 Ft Rear Garden with Side Access
- Living Room and Separate Kitchen/Dining Room
- 1055 Sq Ft of Living Space over 3 Floors
- 0.6 Miles from Whitton Town Centre and Train Station





First Floor



Second Floor

Total Floor Area approx. = 1,055 Sq. Feet (98 sq.metres)

Powder Mill Lane, Whitton

a Websters Estate Agents 164 Heath Road, Twickenham, Middlesex TW1 4BN

t 020 8892 3343

e sales@mywebsters.co.uk w mywebsters.co.uk

Disclaimer

These particulars, whilst believed to be accurate are set out as a general outline only for guidance and do not constitute any part of an offer or contract. Intending purchasers should not rely on them as statements of representation of fact, but must satisfy themselves by inspection or otherwise as to their accuracy. We have not carried out a detailed survey nor tested the services, appliances and specific fittings. Room sizes should not be relied upon for carpets and furnishings. The measurements given are approximate. No person in this firm's employment has the authority to make or give any representation or warranty in respect of the property.

