



Websters
estate agents

Alverton, Fitts Village, BB24007

Fabulous West Coast Barbados beachfront property on a 7111 sq ft plot with direct beach access and stunning sea views. Situated in Fitts Village, St James with local shops nearby and easy car and public transport access to the other coasts, attractions and towns.

Currently a thriving rental property run by the same family for 20 years, Alverton is now For Sale, with potential to become a family/holiday home, remain a successful holiday rental business or even to redevelop the site (subject to approval from the Town and Country Development Planning Office)

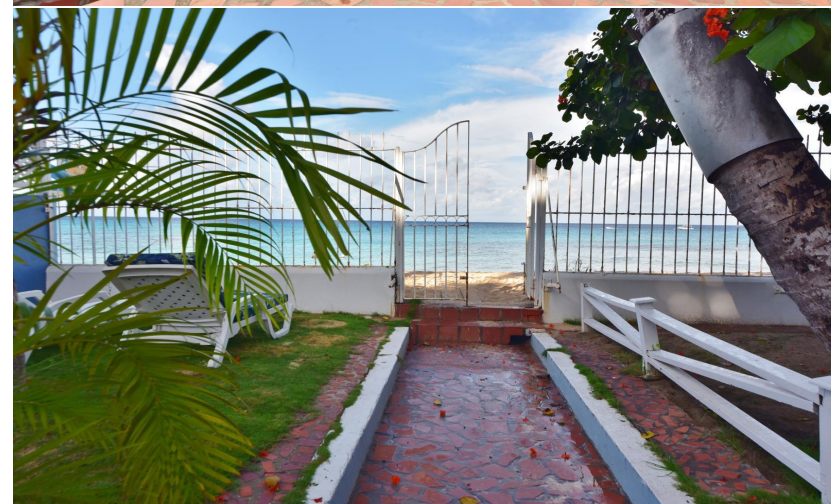
The main house and separate cottage offer a total of 2800 sq ft of living space with large well proportioned rooms, veranda and balcony views of the beach and use of the large shared courtyard garden. Originally dating from the Victorian era, these charming properties offer period style accomodation with wood flooring, large windows and doors, air conditioning in the bedrooms and high vaulted ceilings in the house.

The house offers 1766 sq ft of living space with 3 bedrooms, 3 shower rooms and a living/dining area with fitted kitchen with doors leading onto the covered veranda and down to the garden. A lockable internal door gives the option to split the house to become a large studio room and a 2 bedroom apartment.

The cottage offers 814 sq ft of living space over 2 floors with a kitchen/diner, 2 double bedrooms, a shower room, en-suite bathroom and a fabulous first floor living room with a balcony overlooking the beach.

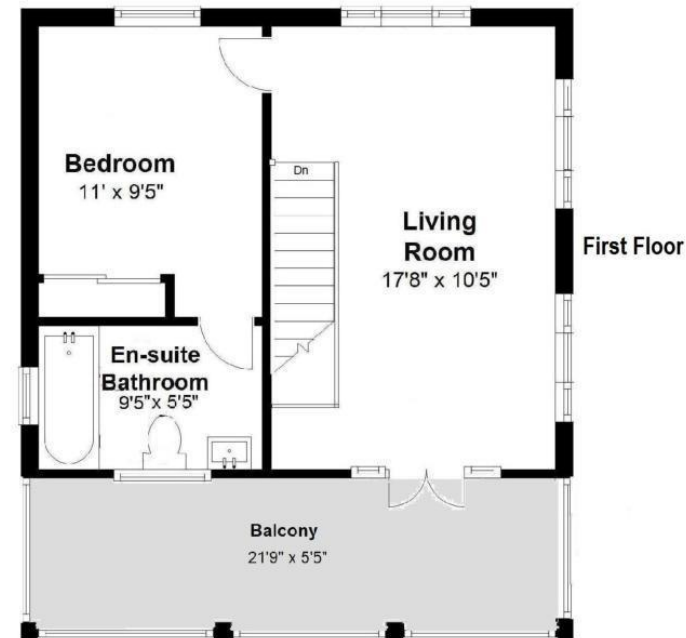
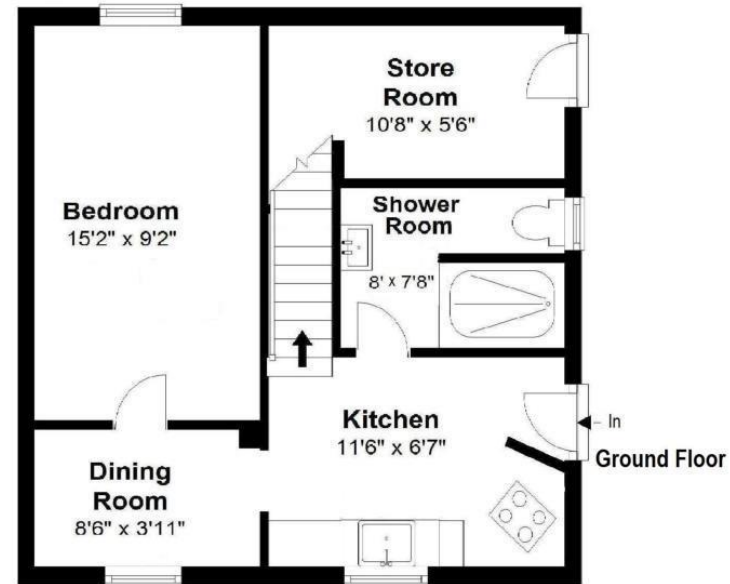
Guide Price USD \$1,950,000

- West Coast Beachfront Property
- Desirable St James Location
- Guide Price \$1,950,000 (USD)
- 3 Bedroom House and 2 Bedroom Cottage
- Direct Gated Beach Access
- Substantial 7111 Sq Ft Plot
- 2800 Sq Ft of Well Proportioned Living Space
- Successful Holiday Rental Business





Total Floor Area approx. = 1,766 Sq. Feet
(excludes Veranda)
 { Total Floor area House only = 1,274 Sq. Feet ; Total Studio = 492 Sq. Feet }



Total Floor Area approx. = 814 Sq. Feet
(excludes Balcony)

a Websters Estate Agents 36 Broad Street, Teddington, Middlesex TW11 8QY t 020 8614 6000 e sales@mywebsters.co.uk w mywebsters.co.uk

Disclaimer
 These particulars, whilst believed to be accurate are set out as a general outline only for guidance and do not constitute any part of an offer or contract. Intending purchasers should not rely on them as statements of representation of fact, but must satisfy themselves by inspection or otherwise as to their accuracy. We have not carried out a detailed survey nor tested the services, appliances and specific fittings. Room sizes should not be relied upon for carpets and furnishings. The measurements given are approximate. No person in this firm's employment has the authority to make or give any representation or warranty in respect of the property.

