



40

38

36

Websters
estate agents

Talbot Road, Twickenham, TW2 6SJ

Mid Terrace 2 bedroom Victorian Cottage 0.3 miles from Twickenham Green, local shops, bars and restaurants, 0.5 miles from Twickenham town centre and 0.7 miles from the mainline train station.

With vacant possession, no onward chain and in need of complete refurbishment.

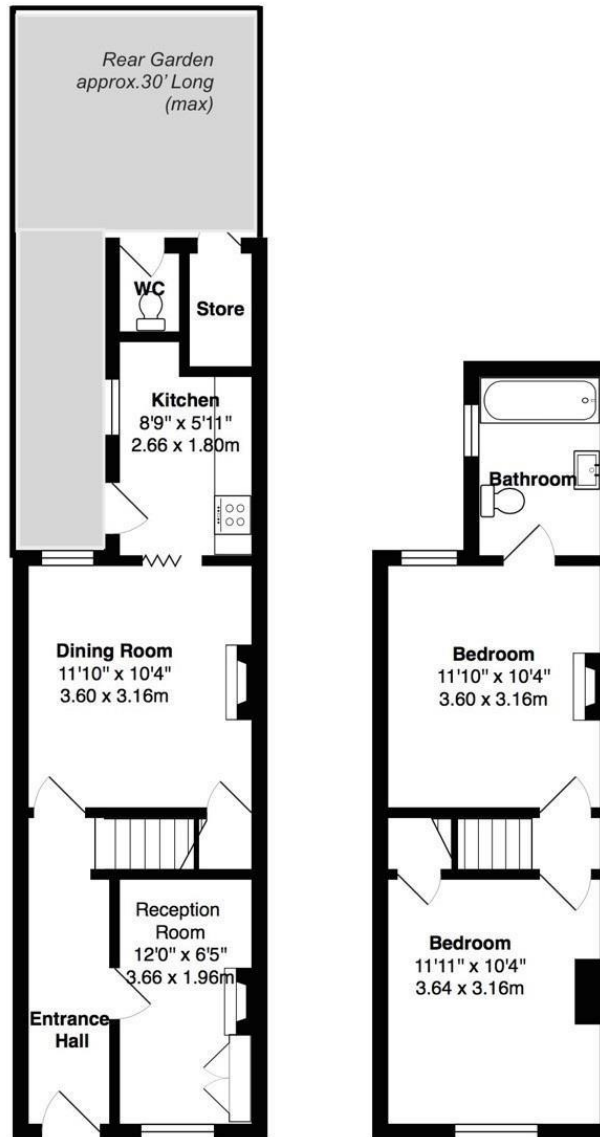
Currently offering 690 sq ft of living space over 2 floors with potential to extend and reconfigure the layout on the ground floor (subject to Planning Permission and Building Regulations).

Entrance hallway leads to the living room at the front and the dining room with access to the kitchen at the rear. A door at the side opens to the 30ft currently very overgrown garden with access to a outdoor w.c and store cupboard. On the first floor are 2 double bedrooms and the bathroom.

Located 0.4 miles from Archdeacon Primary and St Richard Reynolds Primary/Secondary School and 0.7 miles from Church Street/Twickenham Riverside with a towpath walk through Marble Hill Park to Richmond upon Thames.
EPC Rating E

- Mid Terrace Victorian Cottage
- 2 Double Bedrooms and Upstairs Bathroom
- In Need of Complete Refurbishment
- Vacant Possession and No Onward Chain
- Popular Twickenham Location
- 0.3 Miles from Twickenham Green
- 0.7 Miles from Twickenham Station





TOTAL FLOOR AREA approx.690 Sq.Feet(64sq.metres)

a Websters Estate Agents 164 Heath Road, Twickenham, Middlesex TW1 4BN t 020 8892 3343 e sales@mywebsters.co.uk w mywebsters.co.uk

Disclaimer

These particulars, whilst believed to be accurate are set out as a general outline only for guidance and do not constitute any part of an offer or contract. Intending purchasers should not rely on them as statements of representation of fact, but must satisfy themselves by inspection or otherwise as to their accuracy. We have not carried out a detailed survey nor tested the services, appliances and specific fittings. Room sizes should not be relied upon for carpets and furnishings. The measurements given are approximate. No person in this firm's employment has the authority to make or give any representation or warranty in respect of the property.

