



Websters
estate agents

Hampton Road, Twickenham, TW2 5NG

Ground Floor 2 double bedroom maisonette with a private rear garden and driveway parking space. Situated only 0.5 miles from Twickenham Green, 0.6 miles from Strawberry Hill Station and just 0.3 miles from Fulwell Station.

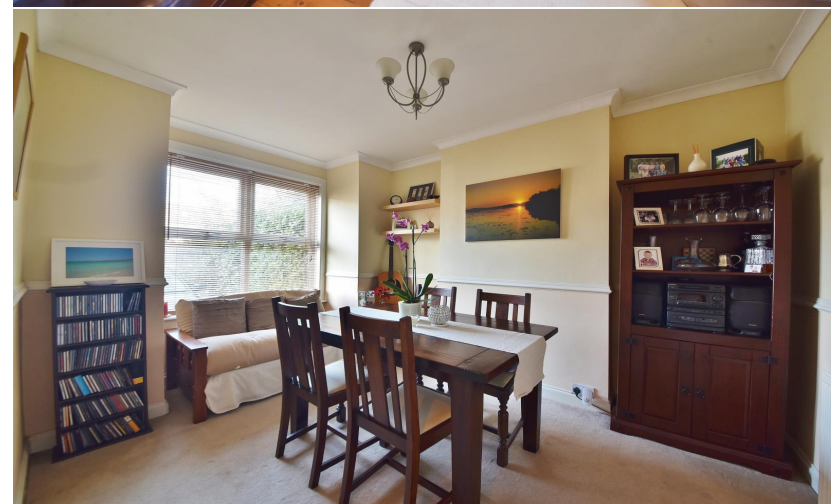
Tastefully presented and offering 657sq ft of well proportioned living space with modern fixtures, fittings and flooring, double glazed windows, a wood burning stove and pleasing neutral decor throughout

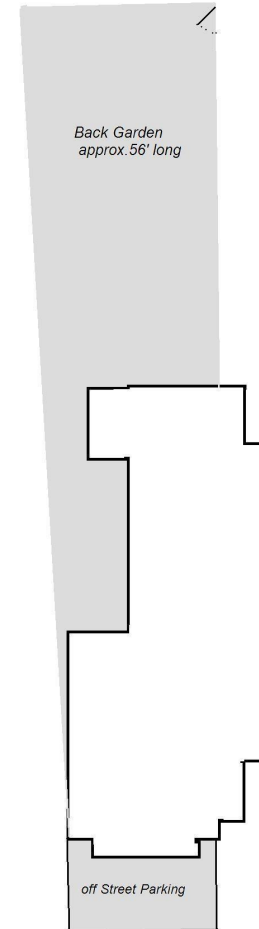
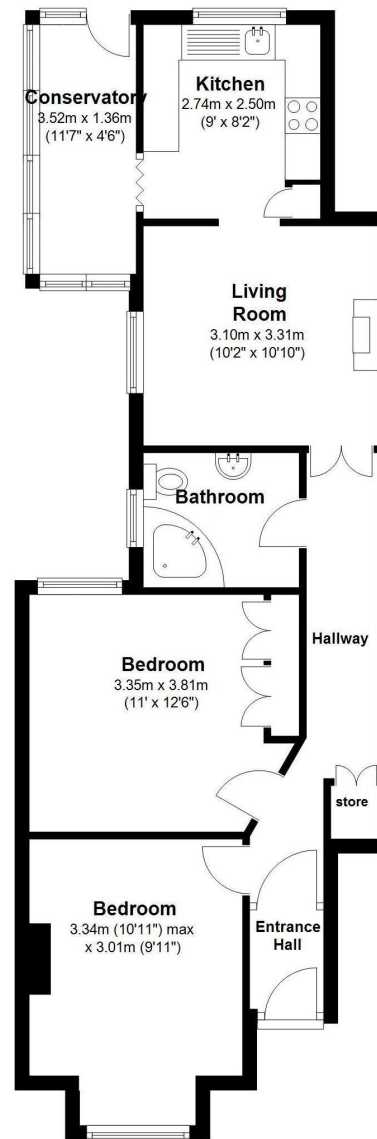
Entrance hallway leads to the 2 double bedrooms, the bathroom and into the living room with access to the fitted kitchen and conservatory at the side. A door opens onto the 56ft low maintenance garden with shed storage and gated rear access.

Located within 0.4 miles of Stanley and St James' Primary and Waldegrave Girls Secondary School/Sixth Form, 0.6 miles from Hampton Hill High Street and 0.8 miles from Bushy Park.

EPC Rating D.

- Ground Floor 2 Bedroom Maisonette
- Private Driveway Parking Space
- Share of Freehold
- 657 Sq Ft of Well Proportioned Living Space
- Living Room and Separate Kitchen
- 56 Ft Low Maintenance Rear Garden
- 0.6 Miles from Strawberry Hill Station





Site Layout
(Not to Scale)

Two Bedroom Maisonette

Total Floor Area approx. = 657 Sq.Feet (61sq.metres)

Hampton Road

a Websters Estate Agents 164 Heath Road, Twickenham, Middlesex TW1 4BN t 020 8892 3343 e sales@mywebsters.co.uk w mywebsters.co.uk

Disclaimer
 These particulars, whilst believed to be accurate are set out as a general outline only for guidance and do not constitute any part of an offer or contract. Intending purchasers should not rely on them as statements of representation of fact, but must satisfy themselves by inspection or otherwise as to their accuracy. We have not carried out a detailed survey nor tested the services, appliances and specific fittings. Room sizes should not be relied upon for carpets and furnishings. The measurements given are approximate. No person in this firm's employment has the authority to make or give any representation or warranty in respect of the property.

