



Websters
estate agents

Albert Road, Twickenham, TW1 4HU

Mid Terrace 2 double bedroom Victorian cottage in a desirable residential cul-de-sac location with a 60ft west facing garden. Situated just 0.4 miles from Twickenham town centre, the mainline train station and Twickenham Green.

With vacant possession, no onward chain and potential to extend and loft convert (subject to Planning Permission and Building Regulations)

Well maintained throughout to offer 732 sq ft of living space over 2 floors with charming period features, sash windows, modern fixtures and fittings and neutral decor.

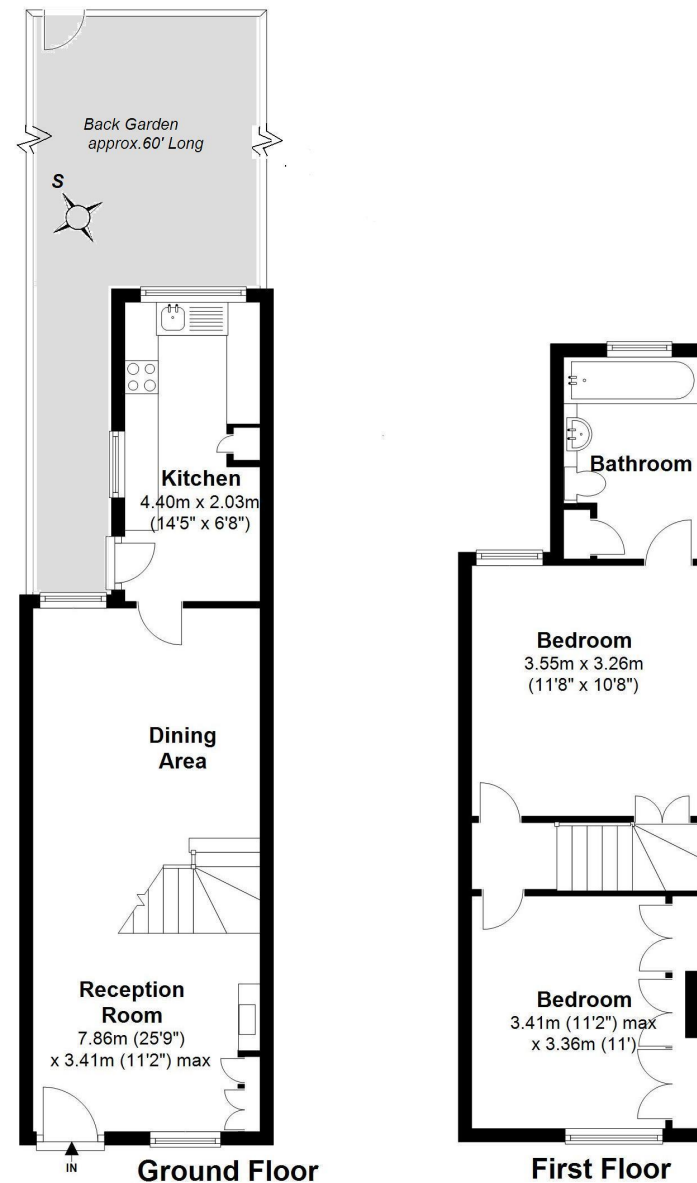
Front door opens into the living/dining room with a door to the kitchen at the rear and access to the low maintenance garden with secure gated rear access. On the first floor are 2 double bedrooms, the bathroom and hatch access to loft storage.

Located just 0.1 mile from St Richard Reynolds Primary/Secondary, 0.5 miles from Archdeacon Cambridge Primary and 0.8 miles from Trafalgar Primary Schools.

EPC Rating D

- Mid Terrace 2 Bedroom Cottage
- Vacant Possession and No Chain
- 60 Ft West Facing Garden with Rear Access
- Desirable Cul-de-Sac Location
- Potential to Extend and Loft Convert (stpp)
- Well Maintained Throughout
- 0.4 Miles from Twickenham Mainline Station





Total Floor Area approx. = 732 Sq. Feet (68 sq. metres)

a Websters Estate Agents 164 Heath Road, Twickenham, Middlesex TW1 4BN t 020 8892 3343 e sales@mywebsters.co.uk w mywebsters.co.uk

Disclaimer
 These particulars, whilst believed to be accurate are set out as a general outline only for guidance and do not constitute any part of an offer or contract. Intending purchasers should not rely on them as statements of representation of fact, but must satisfy themselves by inspection or otherwise as to their accuracy. We have not carried out a detailed survey nor tested the services, appliances and specific fittings. Room sizes should not be relied upon for carpets and furnishings. The measurements given are approximate. No person in this firm's employment has the authority to make or give any representation or warranty in respect of the property.

