



Websters
estate agents
020 8614 6000
mywebsters.co.uk

Websters
estate agents

Park Road, Hampton, TW12 1HF

First and Second floor 2 bedroom maisonette with a Share of Freehold and a fabulous private garden. Situated less than 0.3 miles from Bushy Park and Hampton Hill High Street shops, bars and restaurants and only 0.4 miles from Hampton Hill Nursery and Junior School.

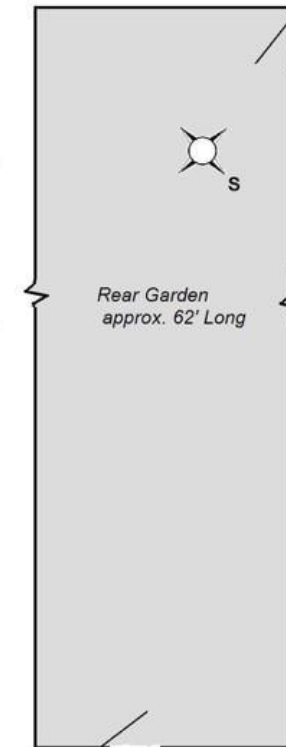
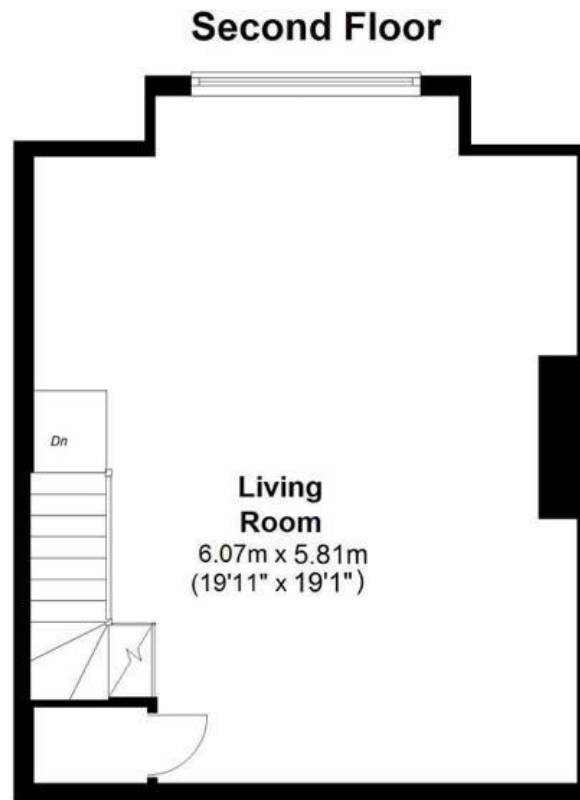
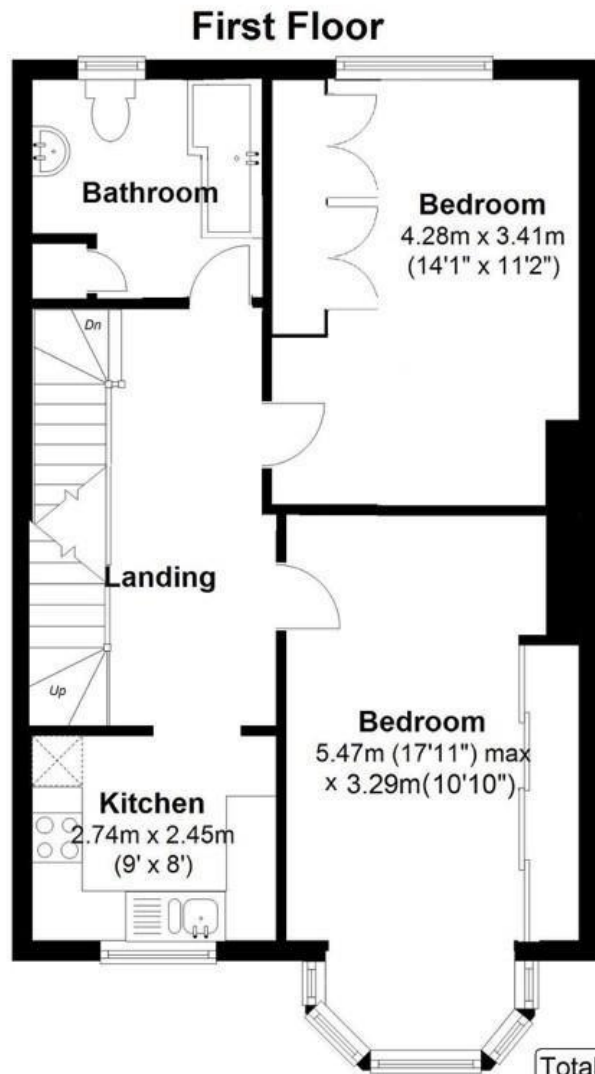
Refurbished by the current owners to an impressive standard to offer 947 sq ft of spacious and adaptable living space over 2 floors. Tastefully presented throughout with high specification fixtures and fittings and flooring, new kitchen and bathroom, large double glazed windows and pleasing neutral decor.

Private front door entrance at the side of the property with stairs leading up to the hallway. Doors open to the 2 double bedrooms with built in wardrobes, the stylish fitted kitchen and the luxury bathroom. Stairs lead up to the spacious living/family room with space for a large living area, a dining area, storage and lovely garden views. The 62ft landscaped garden is accessed from the side of the property and has a patio, lawn, planting and secure shed storage.

Located 0.5 miles from Fulwell train station, 0.8 miles from Teddington town centre and within easy access of public transport towards Richmond, Kingston and Heathrow. EPC Rating D

- Large First and Second Floor Maisonette
- 947 Sq Ft of Adaptable Living Space
- 2 Spacious Double Bedrooms
- Living/Dining Room and Separate Kitchen
- Share of Freehold and Private Garden
- Tastefully Presented Throughout
- 0.3 Miles from Hampton Hill High Street





Ground Floor
Entrance

Total Floor Area approx. 947 Sq.Feet (88 sq.metres)

Park Road, Hampton Hill

a Websters Estate Agents 36 Broad Street, Teddington, Middlesex TW11 8QY

t 020 8614 6000

e sales@mywebsters.co.uk **w** mywebsters.co.uk

Disclaimer

These particulars, whilst believed to be accurate are set out as a general outline only for guidance and do not constitute any part of an offer or contract. Intending purchasers should not rely on them as statements of representation of fact, but must satisfy themselves by inspection or otherwise as to their accuracy. We have not carried out a detailed survey nor tested the services, appliances and specific fittings. Room sizes should not be relied upon for carpets and furnishings. The measurements given are approximate. No person in this firm's employment has the authority to make or give any representation or warranty in respect of the property.

