



Websters  
estate agents

# Connaught Road, Teddington, TW11 0PX

Mid Terrace 4 bedroom Victorian family home in a popular residential location. Situated 0.6 miles from Teddington town centre, 0.4 miles from St Mary's and St Peter's and Stanley Primary Schools and less than 0.8 miles from St James Primary and Waldegrave Girls School/Sixth Form.

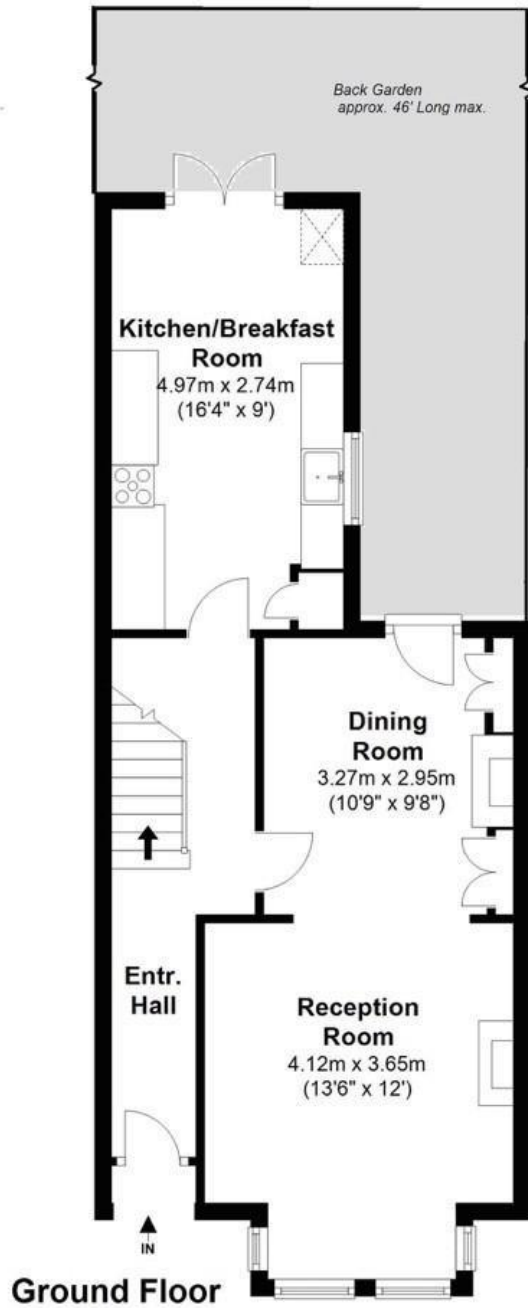
Refurbished and loft converted by the current owners to a high standard to offer 1270 sq ft of living space over 3 floors with modern fixtures and fittings, charming period features, original front door, sash windows, Amtico and wood flooring and pleasing neutral decor. Potential to extend on the ground floor and reconfigure the layout (subject to Planning Permission and Building Regulations)

Entrance hallway leads into the bay fronted, dual aspect living/dining room, the storage cellar and the kitchen/breakfast room at the rear. Doors in the kitchen and dining room open onto the pretty rear garden with a patio, lawn, shed storage and mature planting. On the first floor are 3 bedrooms and the family bathroom with stairs up to second bathroom and bedroom 4 with garden views and eaves storage.

Located only 0.3 miles from Hampton Hill High Street and Bushy Park, 0.6 miles from Fulwell train station and 0.9 miles from Teddington train station  
EPC Rating D

- Mid Terrace Victorian Family Home
- 4 Bedrooms and 2 Bathrooms
- Popular Residential Location
- Potential to Extend (stpp)
- Open Plan Living Room and Kitchen/Breakfast Room
- 1270 Sq Ft of Living Space over 2 Floors
- Close to Numerous Popular Schools
- 0.6 Miles from Teddington Town Centre





Total Floor Area approx. = 1,270 Sq.Feet (118 sq.metres)

a Websters Estate Agents 36 Broad Street, Teddington, Middlesex TW11 8QY

t 020 8614 6000

e sales@mywebsters.co.uk w mywebsters.co.uk

**Disclaimer**

These particulars, whilst believed to be accurate are set out as a general outline only for guidance and do not constitute any part of an offer or contract. Intending purchasers should not rely on them as statements of representation of fact, but must satisfy themselves by inspection or otherwise as to their accuracy. We have not carried out a detailed survey nor tested the services, appliances and specific fittings. Room sizes should not be relied upon for carpets and furnishings. The measurements given are approximate. No person in this firm's employment has the authority to make or give any representation or warranty in respect of the property.

