



50
Night - 8 am
6.30 pm - Night

0
0
2

Websters
estate agents

Chestnut Road, Twickenham, TW2 5QZ

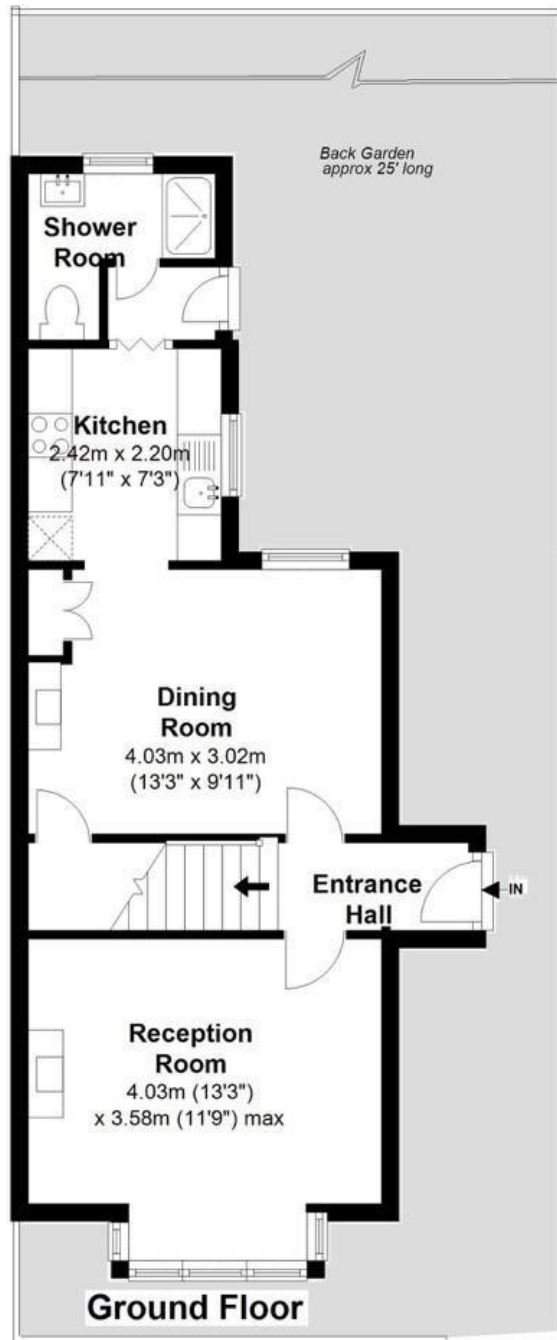
End of Terrace 2 double bedroom Victorian Cottage in a residential cul de sac location with a south west facing garden. Situated just 0.1 mile from Twickenham Green, local shops, bars and restaurants, only 0.3 miles from Archdeacon and Trafalgar Primary Schools and 0.5 miles from Waldegrave Girls School/Sixth Form.

Available with no onward chain this lovely home offers 786 sq ft of well proportioned living space over 2 floors. Tastefully presented with modern fixtures and fittings, charming period features, some sash windows, stripped wood flooring and pleasing neutral decor throughout. Side entrance opens to the lobby with access into the bay fronted living room, the dining room and the fitted kitchen at the rear. Doors open to the shower room and the pretty paved courtyard garden with mature planting and shed storage. On the first floor are 2 double bedrooms, the master with an en-suite bathroom and a pull down hatch to loft storage in the hallway.

Located 0.6 miles from Strawberry Hill Village shops, train station and Twickenham town centre and less than 1 mile from Twickenham mainline train station.
EPC Rating D

- End of Terrace Victorian Family Home
- 2 Double Bedrooms
- En-Suite Bathroom and Separate Shower Room
- No Onward Chain
- South West Facing Garden
- 786 Sq Ft of Living Space over 2 Floors
- Within 0.5 Miles of Popular Schools
- Quiet Cul-de-Sac Location





Total Floor Area approx.=786 Sq.Feet(73sq.m)

a Websters Estate Agents 164 Heath Road, Twickenham, Middlesex TW1 4BN

t 020 8892 3343

e sales@mywebsters.co.uk w mywebsters.co.uk

Disclaimer

These particulars, whilst believed to be accurate are set out as a general outline only for guidance and do not constitute any part of an offer or contract. Intending purchasers should not rely on them as statements of representation of fact, but must satisfy themselves by inspection or otherwise as to their accuracy. We have not carried out a detailed survey nor tested the services, appliances and specific fittings. Room sizes should not be relied upon for carpets and furnishings. The measurements given are approximate. No person in this firm's employment has the authority to make or give any representation or warranty in respect of the property.

