



LEBANON

LEBANON COURT 25-32

SION ROAD

Websters
estate agents

Richmond Road, Twickenham, TW1 3DA

First Floor 2/3 double bedroom apartment in a highly regarded, purpose built mansion block with secure entry phone access, lifts to all floors, on-site porter and unallocated residents parking. Situated just 0.2 miles from popular Church Street shops, bars and restaurants and the River Thames with a fabulous towpath walk through Orleans Gardens and Marble Hill Park to Richmond upon Thames

With vacant possession, no onward chain, a long lease and heating and hot water included in the service charge.

Tastefully presented to offer 807 sq ft of well proportioned and adaptable living space with modern fixtures and fittings, double glazed windows, newly fitted carpets and pleasing neutral decor throughout.

Entrance hallway leads to built in storage, 2 double bedrooms, the bathroom, separate w.c, the stylish fitted kitchen with a balcony and the bay fronted living room with double doors into the dining room/bedroom 3.

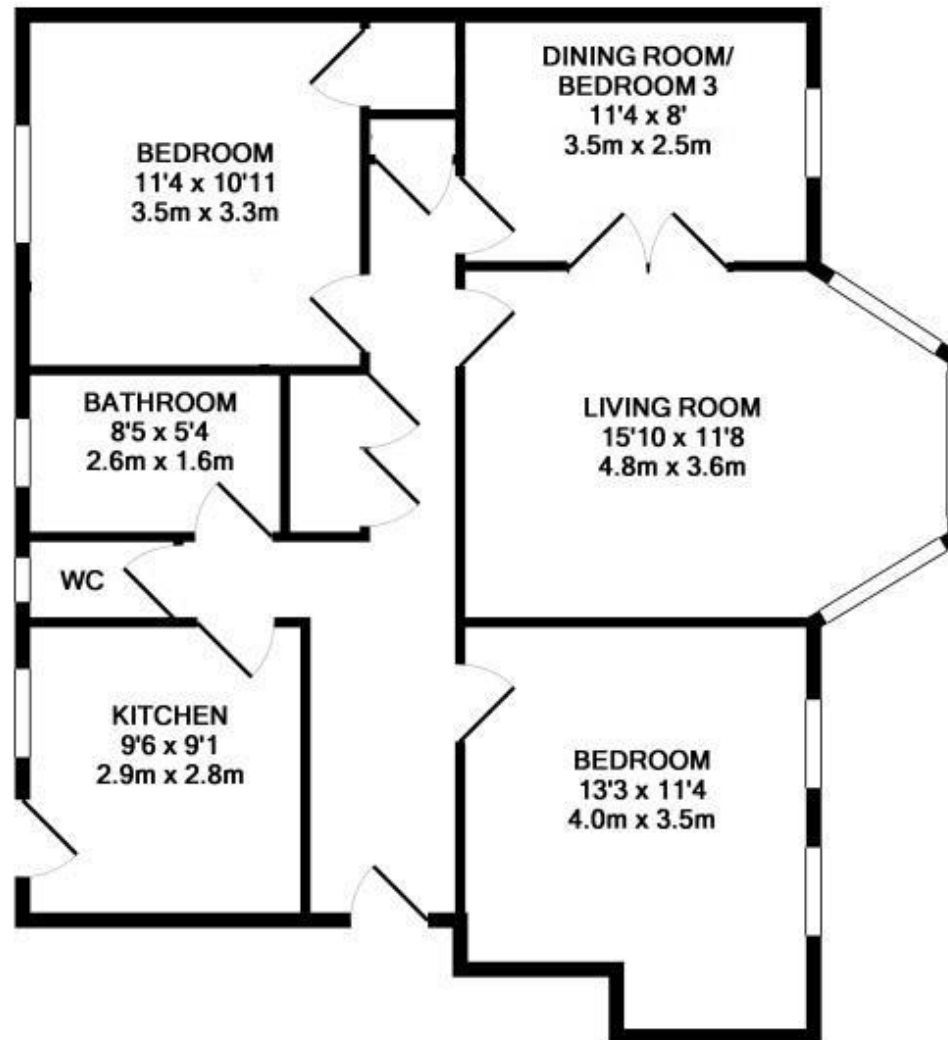
Located less than 0.4 miles from Twickenham town centre and mainline train station and just 0.6 miles from St Margarets Village and train station.

EPC Rating D

- First Floor 2/3 Bedroom Apartment
- 807 Sq Ft of Living Space
- Vacant Possession and No Chain
- Highly Regarded Development
- Modern Fixtures and Fittings
- Spacious Living Room and Separate Kitchen
- 0.4 Miles from Twickenham Station



Lebanon Court, TW1 3DA



TOTAL APPROX FLOOR AREA 807 sq ft (75 sq m)

a Websters Estate Agents 164 Heath Road, Twickenham, Middlesex TW1 4BN t 020 8892 3343 e sales@mywebsters.co.uk w mywebsters.co.uk

Disclaimer
These particulars, whilst believed to be accurate are set out as a general outline only for guidance and do not constitute any part of an offer or contract. Intending purchasers should not rely on them as statements of representation of fact, but must satisfy themselves by inspection or otherwise as to their accuracy. We have not carried out a detailed survey nor tested the services, appliances and specific fittings. Room sizes should not be relied upon for carpets and furnishings. The measurements given are approximate. No person in this firm's employment has the authority to make or give any representation or warranty in respect of the property.

