



Websters
estate agents

Holly Bush Lane, Hampton, TW12 2RB

Semi Detached 5 bedroom family home with a garage and driveway parking in a highly regarded residential area just 0.5 miles from Hampton Village shops, bars and restaurants and Hampton train station.

Extended, loft converted and completely refurbished to an impressive standard to offer 1658 sq ft of well proportioned living space over 3 floors with high specification fixtures, fittings and floorings, double glazed windows and pleasing neutral decor throughout.

Porch opens to the entrance hallway with doors to the living room, a w.c and the open plan kitchen/family room at the rear. This stunning light and spacious room has a stylish integrated kitchen, dining and family seating areas, roof lights and a door to the utility room and garage. Folding doors open onto the garden with a patio, lawn, mature planting, some new fencing and shed storage.

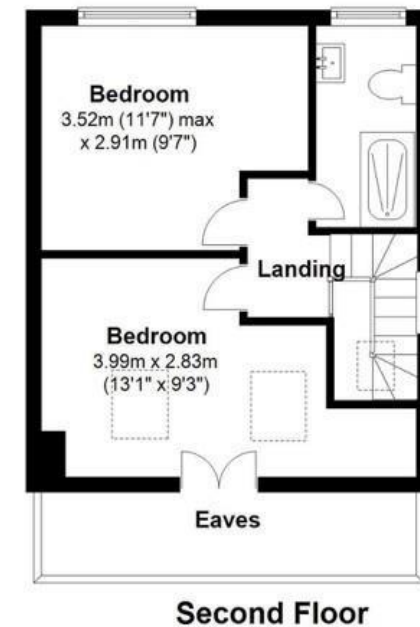
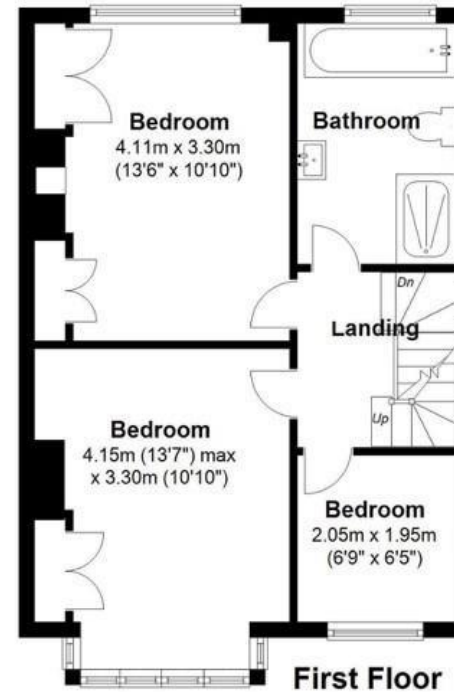
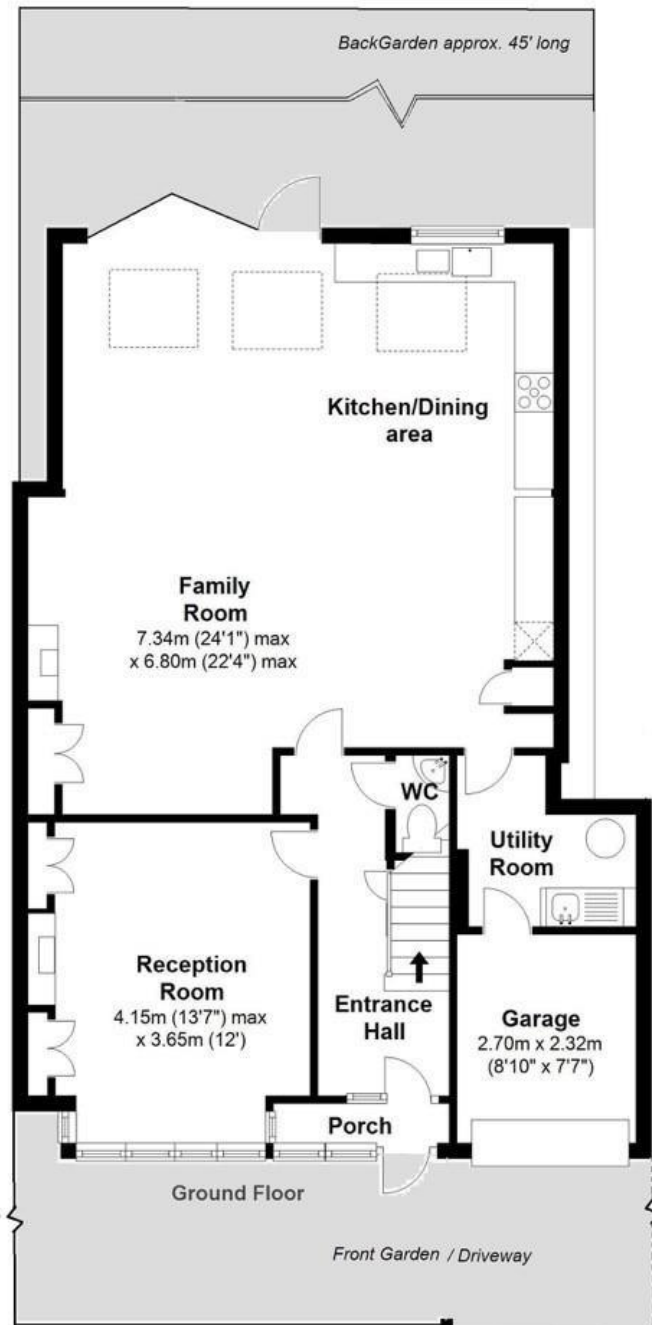
On the first floor are 3 bedrooms and the luxury family bathroom. Stairs lead up to 2 further bedrooms, a bathroom and access to eaves storage.

Located 0.2 miles from Hampton Infant School, 0.5 miles from Hampton Junior School and less than 0.8 miles from Buckingham Primary, Lady Eleanor Hollis and Hampton Boys Schools.

EPC Rating D

- Semi Detached 5 Bedroom Family Home
- Extended, Loft Converted and Refurbished
- Garage and Driveway Parking
- High Specification Throughout
- Well Proportioned 1658 Sq Ft over 3 Floors
- Living Room and Kitchen/Family Room
- 0.6 Miles from Hampton Village and Train Station





Total Floor Area approx. = 1,658 Sq. feet (154 sq. metres)
[includes garage]

a Websters Estate Agents 36 Broad Street, Teddington, Middlesex TW11 8QY t 020 8614 6000 e sales@mywebsters.co.uk w mywebsters.co.uk

Disclaimer
These particulars, whilst believed to be accurate are set out as a general outline only for guidance and do not constitute any part of an offer or contract. Intending purchasers should not rely on them as statements of representation of fact, but must satisfy themselves by inspection or otherwise as to their accuracy. We have not carried out a detailed survey nor tested the services, appliances and specific fittings. Room sizes should not be relied upon for carpets and furnishings. The measurements given are approximate. No person in this firm's employment has the authority to make or give any representation or warranty in respect of the property.

