



Websters  
estate agents



# Meadowside, Cambridge Park, TW1 2JQ

Ground Floor 2 double bedroom apartment in a highly regarded 1930's Art Deco Thames riverside development adjacent to Marble Hill Park within 7 acres of stunning communal landscaped grounds with exclusive residents access, private parking, tennis courts and direct gated Thames towpath access.

With a Share of Freehold, vacant possession and no onward chain, this light and spacious property offers 800 sq ft of well proportioned living space. Tastefully presented and well maintained with large windows and neutral decor.

Entrance hallway with storage leads to the 2 double bedrooms, one with built in wardrobes, the bathroom, separate w.c, the fitted kitchen and the dual aspect living/dining room with a feature fireplace and built in storage shelves.

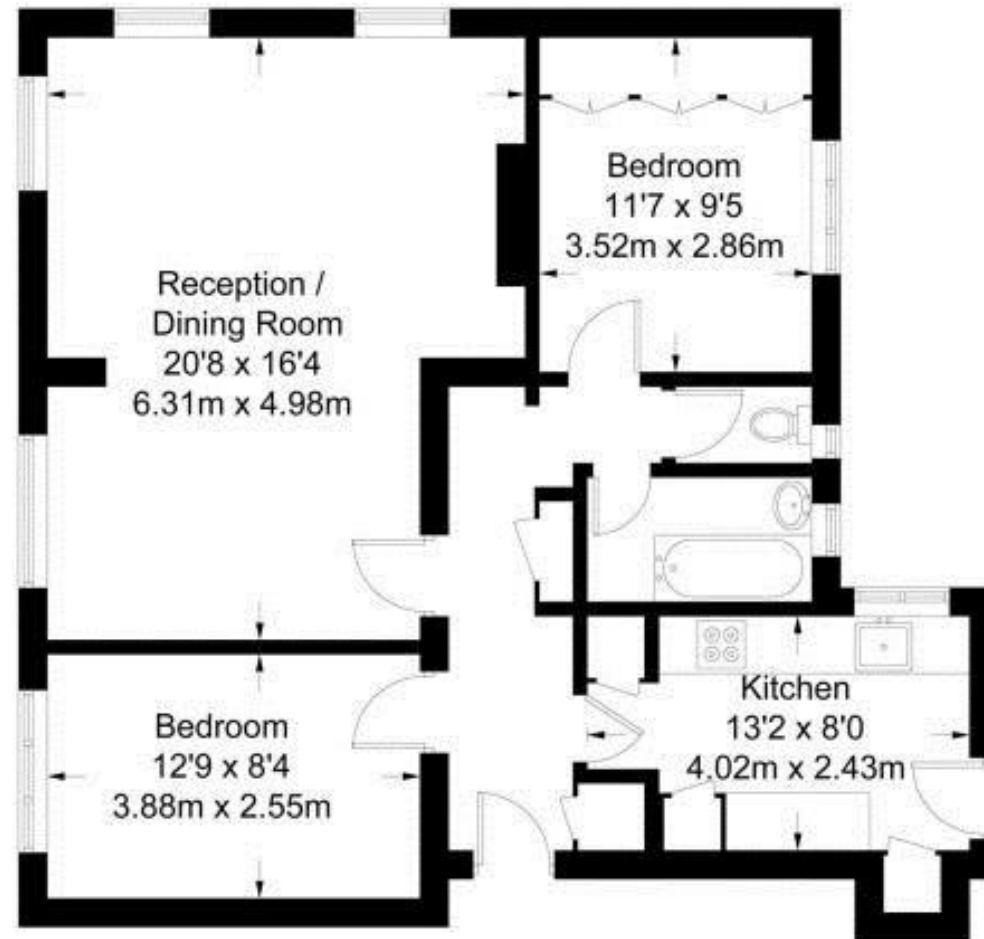
Located just 0.7 miles from Richmond upon Thames and St Margarets Village shops, bars, restaurants and mainline train station.  
EPC Rating E

- Ground Floor 2 Bedroom Apartment
- Prestigious Thames Riverside Development
- Stunning Communal Grounds and Tennis Courts
- 800 Sq Ft of Well Proportioned Living Space
- Dual Aspect Living Room and Separate Kitchen
- Well Maintained Art Deco Buildings
- 0.7 Miles from St Margarets Train Station



## Meadowside

Approximate Gross Internal Area = 803 sq ft / 74.6 sq m



Ground Floor



a Websters Estate Agents 36 Broad Street, Teddington, Middlesex TW11 8QY

t 020 8614 6000

e sales@mywebsters.co.uk w mywebsters.co.uk

**Disclaimer**

These particulars, whilst believed to be accurate are set out as a general outline only for guidance and do not constitute any part of an offer or contract. Intending purchasers should not rely on them as statements of representation of fact, but must satisfy themselves by inspection or otherwise as to their accuracy. We have not carried out a detailed survey nor tested the services, appliances and specific fittings. Room sizes should not be relied upon for carpets and furnishings. The measurements given are approximate. No person in this firm's employment has the authority to make or give any representation or warranty in respect of the property.



