



Websters
estate agents

11 Park Road, Hampton Hill, TW12 1HE

Semi Detached 4/5 bedroom family home with driveway parking for 3/4 cars and a 75 ft south facing garden. Situated just 0.3 miles from Hampton Hill Nursery and Junior Schools, 0.7 miles from Stanley and St Mary's and St Peter's Primary and 1 mile from Lady Eleanor Hollis and Hampton Boys Schools.

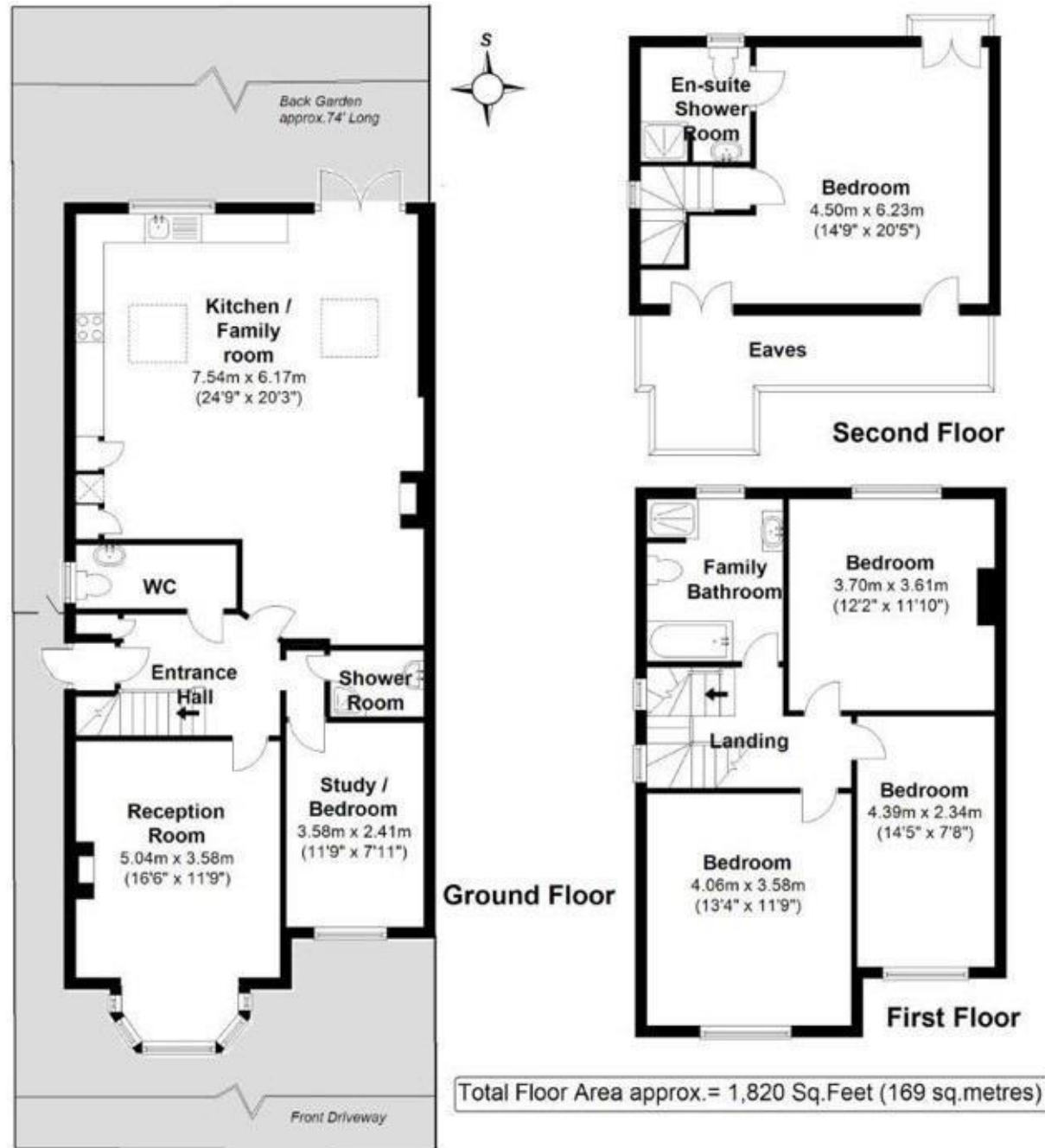
Extended at the rear and loft converted to offer 1820 sq ft of well proportioned and adaptable living space over 3 floors. Tastefully presented with high specification fixtures, fittings and floorings, double glazed windows and modern neutral decor throughout.

Entrance hallway leads to the bay fronted living room with wood flooring and a feature fireplace, a w.c, shower room, the study/bedroom 5 and the kitchen/family room at the rear. This stunning room has a stylish part integrated kitchen with a range style cooker, breakfast bar, granite worktops and space for dining and seating. Double doors open onto the lovely south facing garden with a patio, lawn, mature planting, shed storage and secure gated side access. On the first floor are 3 bedrooms and the family bathroom with stairs up to the master bedroom with an en-suite shower room, juliet balcony and eaves storage.

Located 0.3 miles from Hampton Hill High Street and Bushy Park, 0.5 miles from Fulwell train station and 0.8 miles from Teddington town centre.
EPC Rating D

- Semi Detached 4/5 Bedroom Family House
- 1820 Sq Ft of Living Space over 3 Floors
- 75 Ft South Facing Garden
- Driveway Parking for 3/4 Cars
- Living Room, Study and Kitchen/Family Room
- Tastefully Presented Throughout
- 0.3 Miles from Hampton Hill High Street





a Websters Estate Agents 36 Broad Street, Teddington, Middlesex TW11 8QY t 020 8614 6000 e sales@mywebsters.co.uk w mywebsters.co.uk

Disclaimer
 These particulars, whilst believed to be accurate are set out as a general outline only for guidance and do not constitute any part of an offer or contract. Intending purchasers should not rely on them as statements of representation of fact, but must satisfy themselves by inspection or otherwise as to their accuracy. We have not carried out a detailed survey nor tested the services, appliances and specific fittings. Room sizes should not be relied upon for carpets and furnishings. The measurements given are approximate. No person in this firm's employment has the authority to make or give any representation or warranty in respect of the property.

