



Websters
estate agents

Holly Road, Twickenham, TW1 4HF

Mid Terrace Victorian Cottage in a central Twickenham location less than 0.1 miles from town centre shops, bars and restaurants and just 0.5 miles from Twickenham mainline train station.

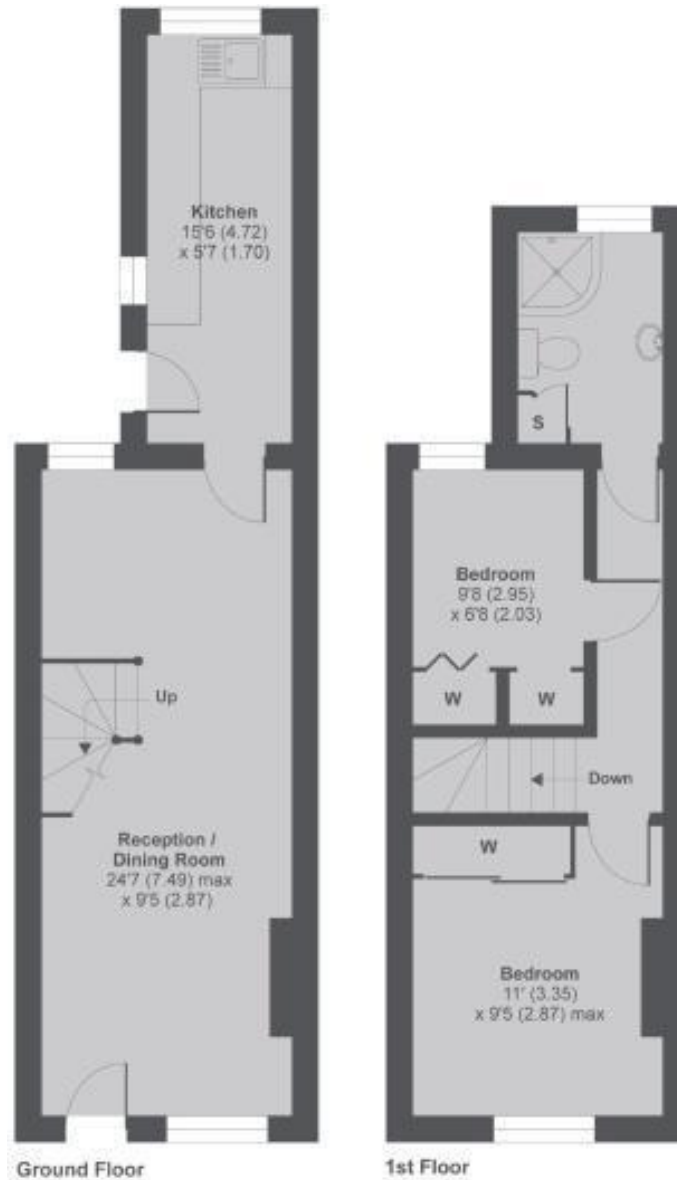
With no onward chain, this charming period property offers 605 sq ft of well planned and tastefully presented living space over 2 floors with modern fixtures, fittings and floorings, double glazed windows, pleasing neutral decor and a low maintenance rear garden.

Front door opens into the dual aspect living/dining room with a feature fireplace and wooden floor. A door at the rear leads into the galley style part integrated kitchen with a door at the side opening onto the garden. On the first floor are 2 bedrooms with built in storage, the family shower room and access to loft storage.

Located 0.3 miles from Church Street and Twickenham Riverside with a beautiful towpath walk along the Thames to Orleans House, Marble Hill Park and Richmond upon Thames
EPC Rating C

- Mid Terrace Victorian Cottage
- 2 Bedrooms and Upstairs Bathroom
- Open Plan Living/Dining and Separate Kitchen
- Central Twickenham Location
- Tastefully Presented Throughout
- No Onward Chain
- 0.5 Miles from Twickenham Mainline Station





Holly Road TW1

MAIN HOUSE APPROX FLOOR AREA 605 SQ.FT 56.2 SQ.M

a Websters Estate Agents 164 Heath Road, Twickenham, Middlesex TW1 4BN t 020 8892 3343 e sales@mywebsters.co.uk w mywebsters.co.uk

Disclaimer

These particulars, whilst believed to be accurate are set out as a general outline only for guidance and do not constitute any part of an offer or contract. Intending purchasers should not rely on them as statements of representation of fact, but must satisfy themselves by inspection or otherwise as to their accuracy. We have not carried out a detailed survey nor tested the services, appliances and specific fittings. Room sizes should not be relied upon for carpets and furnishings. The measurements given are approximate. No person in this firm's employment has the authority to make or give any representation or warranty in respect of the property.

