



Websters
estate agents

Richmond Road, Twickenham, TW1 3AW

First and Second Floor split level, bright and well proportioned Maisonette with a Share of Freehold, west facing private balcony and low maintenance garden. Situated just 0.5 miles from St Margarets Village and train station and Twickenham mainline station.

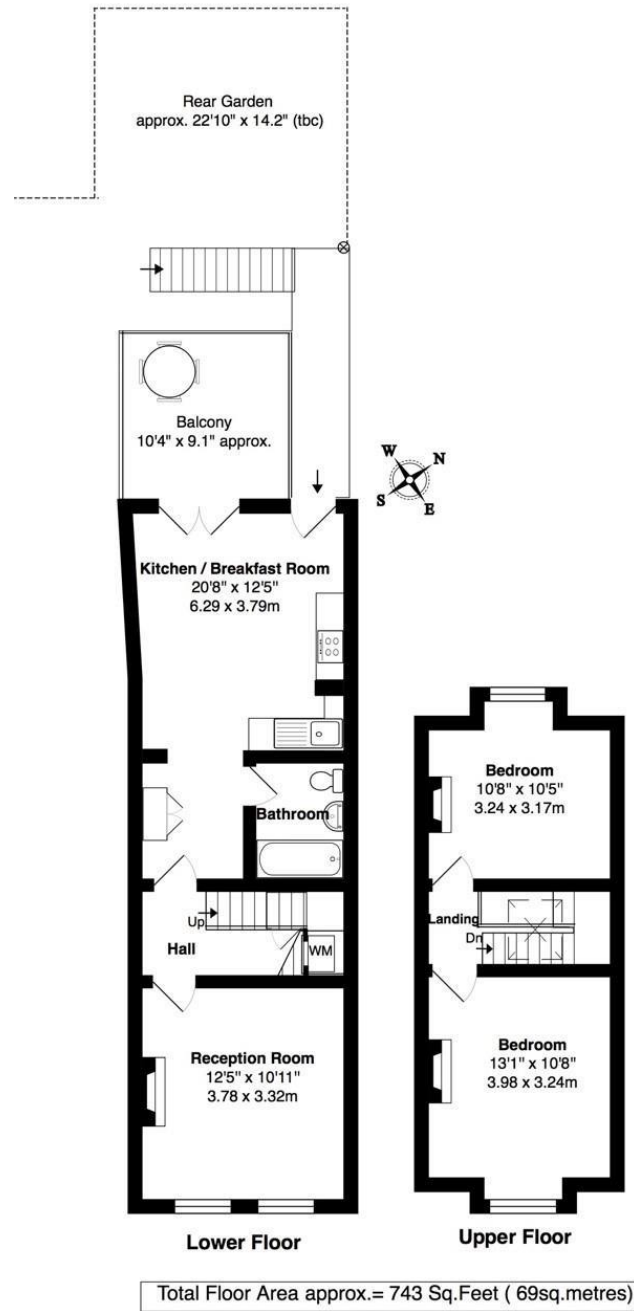
Attractive well maintained building with rear access to the individual properties from a communal outdoor area. Tastefully presented and offering 743 sq ft of light filled living space over 2 floors with modern fixtures, fittings and flooring, double glazed windows and doors at the rear, high ceilings, built in storage and pleasing neutral decor throughout.

External staircase at the rear of the property leads upstairs to the front door which opens into the kitchen/family room. This spacious room has a fitted kitchen, dining area and doors opening to the west facing decked balcony with views across attractive residential properties. A lobby area with storage leads to the family bathroom and the hallway with a laundry cupboard and door into the living room. Stairs lead up to the 2 large double bedrooms on the second floor. At the base of the external stairs is the paved garden with shed storage, planting and a seating area.

Located 0.3 miles from Twickenham town centre and Marble Hill Park and only 0.2 miles from Church Street shops, bars and restaurants and Twickenham Riverside with fabulous Thames towpath walk towards Richmond/Kew
EPC Rating D

- First and Second Floor Maisonette
- West Facing Balcony and Private Garden
- 2 Large Double Bedrooms
- Share of Freehold
- 743 Sq Ft of Well Proportioned Living Space
- Living Room and Kitchen/Dining Room
- 0.5 Miles from Twickenham Mainline Station





Total Floor Area approx.= 743 Sq.Feet (69sq.metres)

a Websters Estate Agents 164 Heath Road, Twickenham, Middlesex TW1 4BN t 020 8892 3343 e sales@mywebsters.co.uk w mywebsters.co.uk

Disclaimer
These particulars, whilst believed to be accurate are set out as a general outline only for guidance and do not constitute any part of an offer or contract. Intending purchasers should not rely on them as statements of representation of fact, but must satisfy themselves by inspection or otherwise as to their accuracy. We have not carried out a detailed survey nor tested the services, appliances and specific fittings. Room sizes should not be relied upon for carpets and furnishings. The measurements given are approximate. No person in this firm's employment has the authority to make or give any representation or warranty in respect of the property.

