



Websters
estate agents
For Sale

Websters
estate agents

Edwin Road, Twickenham, TW2 6SL

End of Terrace 2 bedroom Victorian Cottage in a popular residential location 0.2 miles from Twickenham Green, local shops, bars and restaurants and 0.7 miles from Strawberry Hill and Twickenham mainline train stations.

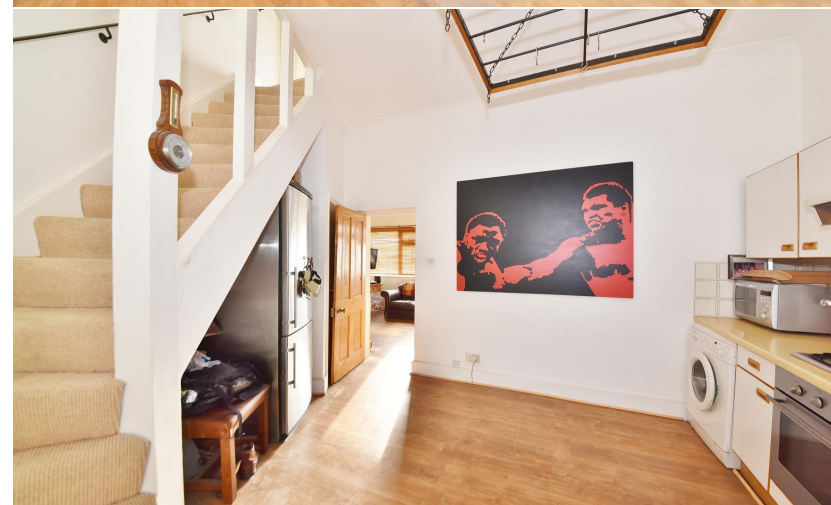
Currently offering 670 sq ft of living space over 2 floors with high ceilings and a charming period feel. In need of some updating with potential to extend and loft convert (subject to Planning Permission and Building Regulations)

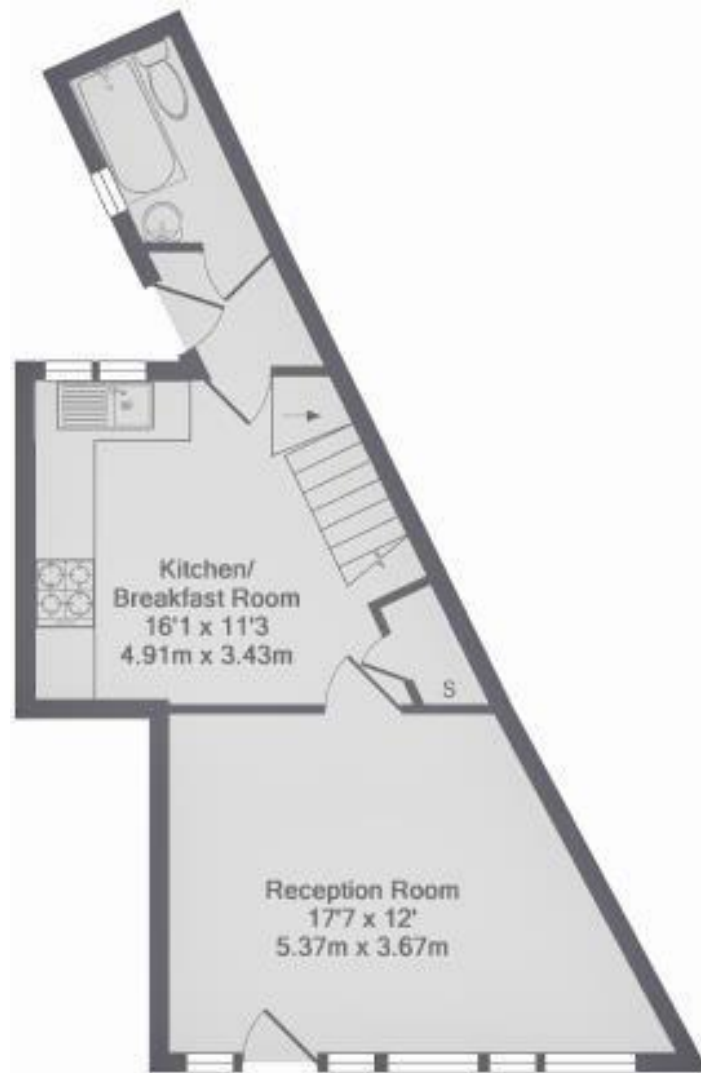
Front door opens into the living room with wood flooring and doors into the spacious fitted kitchen/breakfast room and the modern bathroom at the rear. A door at the side opens onto the secluded garden with secure gated access at the side.

On the first floor are 2 double bedrooms and access to loft storage

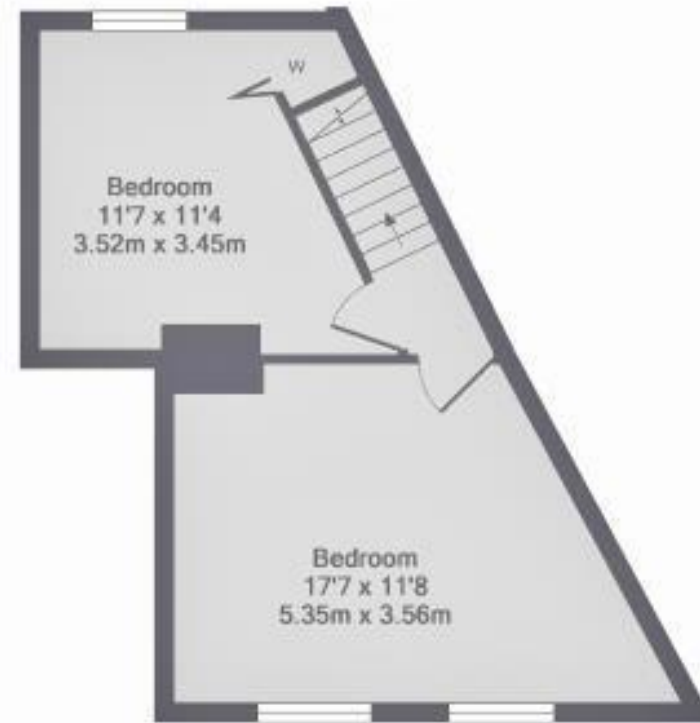
Located 0.5 miles from Twickenham Town Centre, 0.3 miles from Archdeacon Primary and 0.6 miles from Trafalgar Primary School
EPC Rating F

- End of Terrace Victorian Cottage
- 2 Double Bedrooms
- Potential to Extend/Loft Convert (stpp)
- Twickenham Green Location
- Living Room and Kitchen/Breakfast Room
- 670 Sq Ft of Living Space
- 0.7 Miles from Twickenham Train Station





Ground Floor



1st Floor

Edwin Road, TW2
 Total Approx. Floor Area 670 Sq.Ft. (62.2 Sq.M.)

a Websters Estate Agents 164 Heath Road, Twickenham, Middlesex TW1 4BN t 020 8892 3343 e sales@mywebsters.co.uk w mywebsters.co.uk

Disclaimer
 These particulars, whilst believed to be accurate are set out as a general outline only for guidance and do not constitute any part of an offer or contract. Intending purchasers should not rely on them as statements of representation of fact, but must satisfy themselves by inspection or otherwise as to their accuracy. We have not carried out a detailed survey nor tested the services, appliances and specific fittings. Room sizes should not be relied upon for carpets and furnishings. The measurements given are approximate. No person in this firm's employment has the authority to make or give any representation or warranty in respect of the property.

