



Websters
estate agents

Colne Road, Twickenham, TW2 6QF

Semi Detached 2 bedroom Victorian Cottage with a south facing garden in a popular residential area just 0.1 mile from Twickenham Green, local shops, bars and restaurants and less than 0.7 miles from Strawberry Hill and Twickenham train stations.

Tastefully presented charming period home offering 685 sq ft of living space over 2 floors with modern fixtures and fittings, large sash windows and pleasing neutral decor throughout.

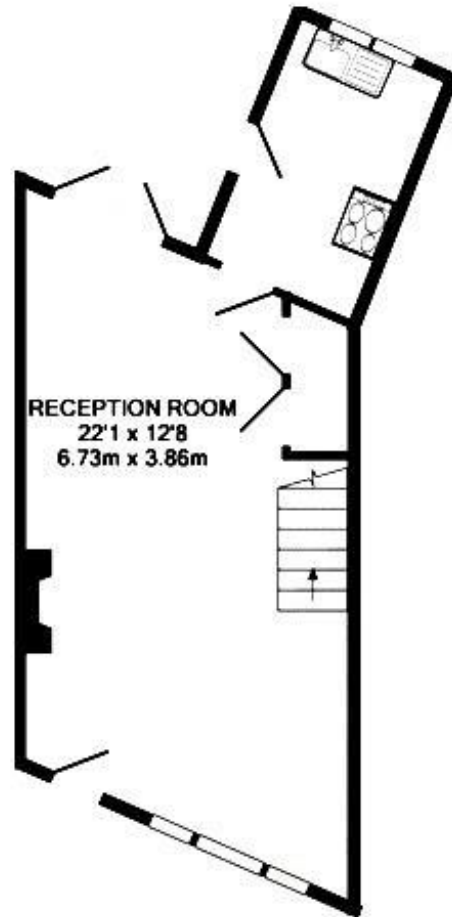
Front door opens into the living/dining room with a door into the stylish fitted kitchen and double doors onto the low maintenance garden with planting, space for seating/storage and secure gated side access. On the first floor are 2 double bedrooms, the large family bathroom and hatch access to loft storage.

Located 0.4 miles from Twickenham town centre and 0.6 miles from Church Street and Twickenham Riverside with a towpath walk past Marble Hill Park to Richmond upon Thames.

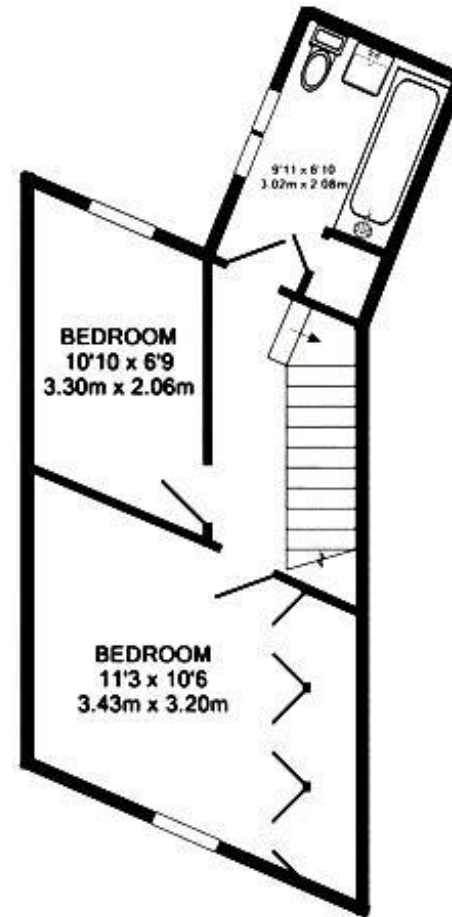
EPC Rating E

- Semi Detached Victorian Cottage
- 2 Bedrooms and Upstairs Bathroom
- South Facing Garden
- Open Plan Living Downstairs
- Tastefully Presented Throughout
- Popular Twickenham Location
- 0.7 Miles from Strawberry Hill and Twickenham Stations





GROUND FLOOR
APPROX. FLOOR
AREA 31.8 SQ.M.
(342 SQ.FT.)



1ST FLOOR
APPROX. FLOOR
AREA 31.8 SQ.M.
(342 SQ.FT.)

TOTAL APPROX. FLOOR AREA 63.6 SQ.M. (685 SQ.FT.)

a Websters Estate Agents 164 Heath Road, Twickenham, Middlesex TW1 4BN t 020 8892 3343 e sales@mywebsters.co.uk w mywebsters.co.uk

Disclaimer

These particulars, whilst believed to be accurate are set out as a general outline only for guidance and do not constitute any part of an offer or contract. Intending purchasers should not rely on them as statements of representation of fact, but must satisfy themselves by inspection or otherwise as to their accuracy. We have not carried out a detailed survey nor tested the services, appliances and specific fittings. Room sizes should not be relied upon for carpets and furnishings. The measurements given are approximate. No person in this firm's employment has the authority to make or give any representation or warranty in respect of the property.

