



Websters
estate agents
0203 2892 2345
www.websters.co.uk 020 3285

32

30

Websters
estate agents

Norcutt Road, Twickenham, TW2 6SR

Mid Terrace 3 bedroom Victorian family home in a popular and quiet cul-de-sac location. Situated just 0.3 miles from Twickenham Green, local shops and restaurants and only 0.8 miles from Strawberry Hill and Twickenham mainline train station.

Extended at the rear, loft converted and immaculately presented to offer 936 sq ft of living space over 3 floors with high specification fixtures, fittings and floorings, double glazed windows and tasteful neutral decor throughout.

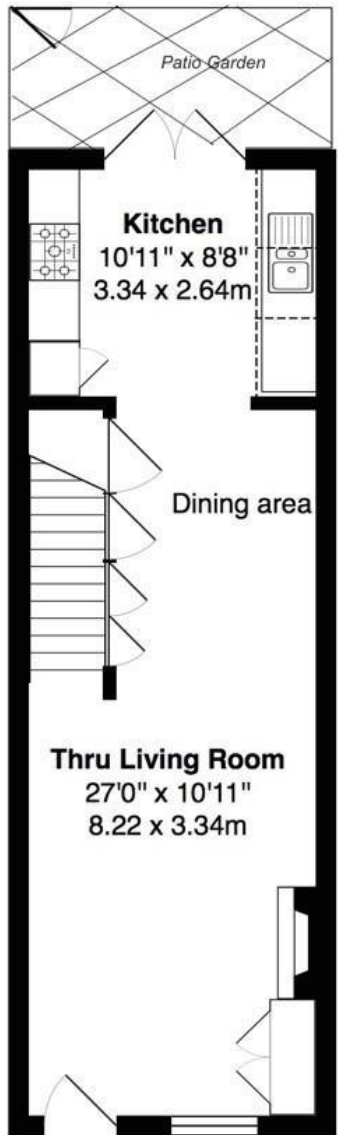
Front door opens into the living/dining room with the stylish fitted kitchen at the rear. Double doors open onto the courtyard garden with space for storage and seating and secure gated rear access. On the first floor are 2 bedrooms, the family bathroom, built in storage and stairs up to the master bedroom with a shower room, eaves storage and a Juliet balcony overlooking the garden.

Located within 0.5 miles of Archdeacon Primary, Trafalgar Primary and St Richard Reynolds Primary/Secondary Schools, 0.6 miles from Twickenham town centre and 0.7 miles from Church Street and Twickenham Riverside with a towpath walk along the Thames to Richmond upon Thames.

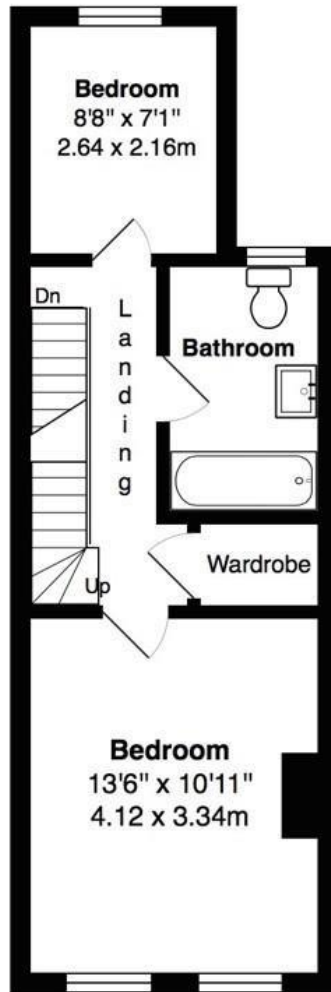
EPC Rating D

- Mid Terrace 3 Bedroom Family Home
- Extended and Loft Converted
- Quiet Residential Location
- Open Plan Family Living
- 936 Sq Ft of Living Space over 3 Floors
- High Specification Throughout
- Within 0.5 Miles of Popular Schools

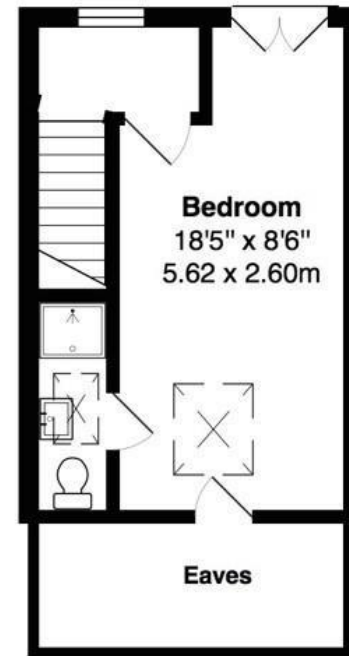




GROUND FLOOR



FIRST FLOOR



SECOND FLOOR

TOTAL FLOOR AREA approx.= 936 Sq.Feet (87 sq.metres)

a Websters Estate Agents 164 Heath Road, Twickenham, Middlesex TW1 4BN t 020 8892 3343 e sales@mywebsters.co.uk w mywebsters.co.uk

Disclaimer
 These particulars, whilst believed to be accurate are set out as a general outline only for guidance and do not constitute any part of an offer or contract. Intending purchasers should not rely on them as statements of representation of fact, but must satisfy themselves by inspection or otherwise as to their accuracy. We have not carried out a detailed survey nor tested the services, appliances and specific fittings. Room sizes should not be relied upon for carpets and furnishings. The measurements given are approximate. No person in this firm's employment has the authority to make or give any representation or warranty in respect of the property.

