



Websters  
estate agents

# Ivybridge Close, Twickenham, TW1 1EA

Ground Floor 1 bedroom apartment in a popular modern development with an allocated parking space and communal gardens. Situated just 0.3 miles from Twickenham mainline train station and 0.2 miles from the A316 with direct access to the M3/M25 and into Central London.

With vacant possession and no onward chain.

Refurbished and tastefully presented to offer 481 sq ft of well balanced living space with modern fixtures, fittings and floorings, built in storage, large double glazed windows and neutral decor throughout.

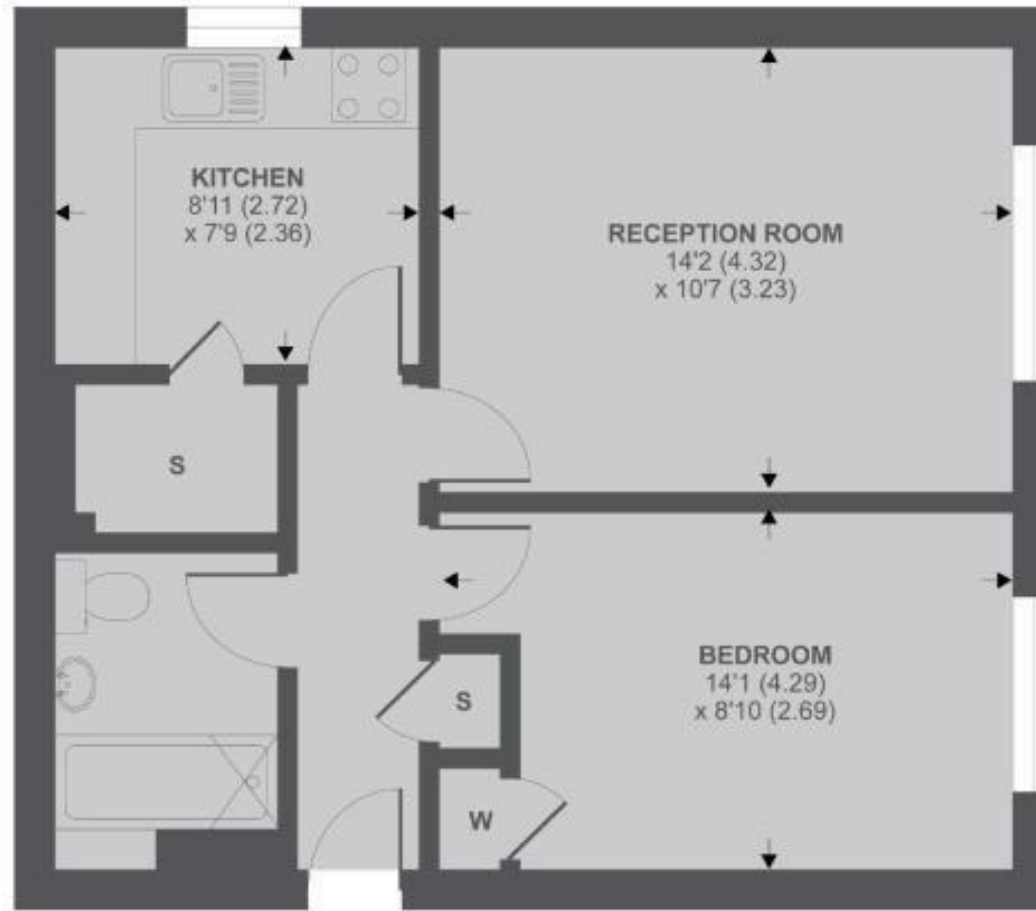
Entrance hallway leads to the bathroom, the double bedroom, the living room and the separate fitted kitchen.

Located 0.4 miles from Twickenham town centre shops, bars and restaurants and 0.7 miles from Church Street and Twickenham Riverside with a towpath walk leading past Marble Hill Park to Richmond upon Thames.

EPC Rating C

- Ground Floor 1 Bedroom Apartment
- Allocated Parking Space
- No Onward Chain
- Popular Modern Development
- Living Room and Separate Kitchen
- Tastefully Presented Throughout
- 0.3 Miles from Twickenham Station





**Ground Floor**

## Ivybridge Close, TW1

APPROX FLOOR AREA 481 SQ.FT 44.7 SQ.M

**a** Websters Estate Agents 164 Heath Road, Twickenham, Middlesex TW1 4BN    **t** 020 8892 3343    **e** sales@mywebsters.co.uk    **w** mywebsters.co.uk

**Disclaimer**

These particulars, whilst believed to be accurate are set out as a general outline only for guidance and do not constitute any part of an offer or contract. Intending purchasers should not rely on them as statements of representation of fact, but must satisfy themselves by inspection or otherwise as to their accuracy. We have not carried out a detailed survey nor tested the services, appliances and specific fittings. Room sizes should not be relied upon for carpets and furnishings. The measurements given are approximate. No person in this firm's employment has the authority to make or give any representation or warranty in respect of the property.

