



Websters  
estate agents



# Selkirk Road, Twickenham, TW2 6PT

Ground Floor 2 bedroom Maisonette in a popular residential area with a private south facing garden. Situated 0.6 miles from Whitton Town Centre and mainline train station and just 0.3 miles from the A316 with direct access to the M3/M25 and into central London.

Tastefully presented to offer 602 sq ft of well proportioned living space with modern fixtures, fittings and floorings, double glazed windows and neutral decor throughout.

Private front door at the side of the property opens to the hallway with doors to the 2 bedrooms, bathroom, the living/dining room and the separate kitchen at the rear. This light filled room has stylish fitted units and a door onto the south facing garden with a patio and lawn.

Located 0.2 miles from Crane Park and less than 0.8 miles from Twickenham Green, Trafalgar Nursery/Primary, St James Primary and Waldegrave Girls School/Co-ed Sixth Form.

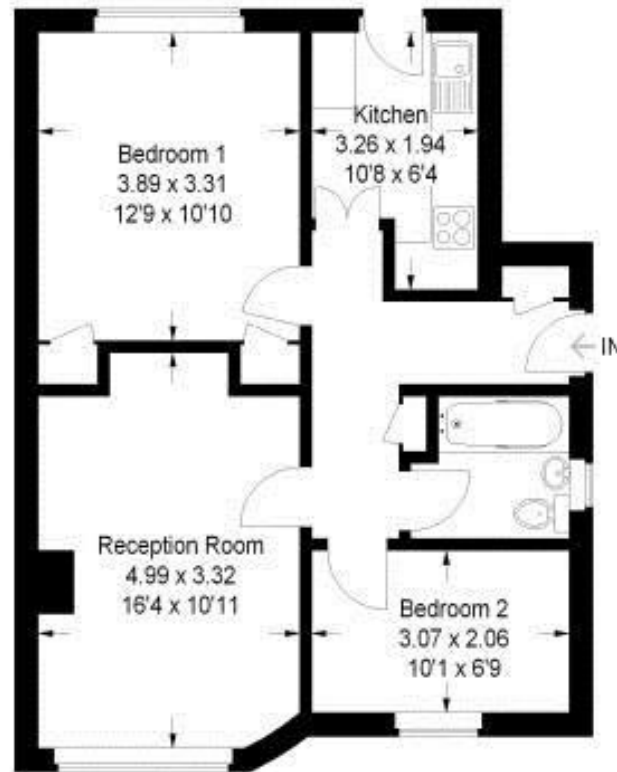
EPC Rating D

- Ground Floor 2 Bedroom Maisonette
- Private South Facing Garden
- Well Proportioned Living Space
- Living Room and Seperate Kitchen
- No Service Charge
- Tastefully Presented Throughout
- 0.6 Miles from Whitton Town Centre and Station



## Selkirk Road

Approx . Gross Internal Area  
55.9 sq mt / 602 sq ft



a Websters Estate Agents 164 Heath Road, Twickenham, Middlesex TW1 4BN t 020 8892 3343 e sales@mywebsters.co.uk w mywebsters.co.uk

### Disclaimer

These particulars, whilst believed to be accurate are set out as a general outline only for guidance and do not constitute any part of an offer or contract. Intending purchasers should not rely on them as statements of representation of fact, but must satisfy themselves by inspection or otherwise as to their accuracy. We have not carried out a detailed survey nor tested the services, appliances and specific fittings. Room sizes should not be relied upon for carpets and furnishings. The measurements given are approximate. No person in this firm's employment has the authority to make or give any representation or warranty in respect of the property.

